

WAAS CH 45739 W22A	APP CRS 223°	Rwy Idg TDZE Apt Elev	5132 1087 1087
----------------------------------------	------------------------	-----------------------------	-------------------------------------------

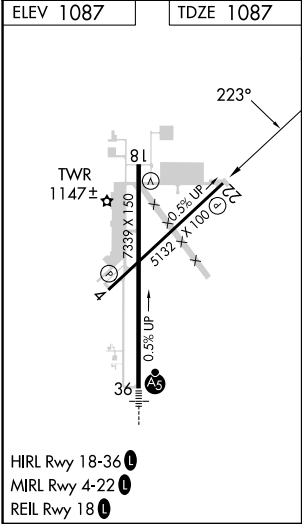
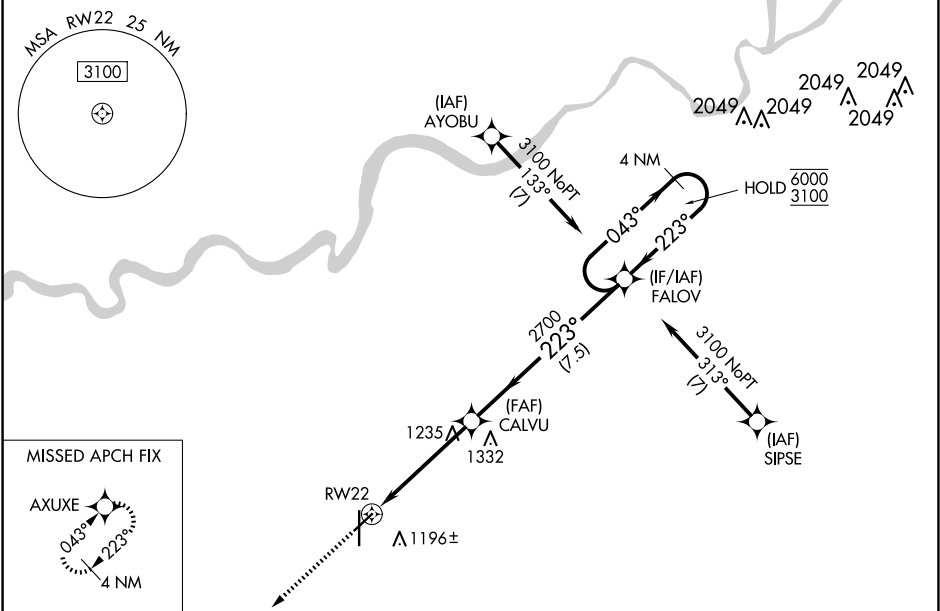
RNAV (GPS) RWY 22
NEW CENTURY AIRCENTER (IXD)


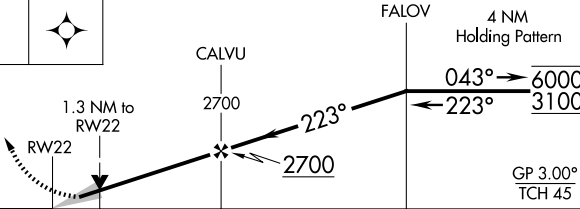

RNP APCH - GPS.

⚠ Baro-VNAV and VDP NA when using OJC altimeter setting. For uncompensated Baro-VNAV systems, LNAV/VNAV NA below -17°C or above 54°C. When local altimeter setting not received, use OJC altimeter setting: increase LPV DA to 1355 feet and LNAV/VNAV DA to 1368 feet and all MDA 20 feet.

MISSED APPROACH: Climb to 3100 direct AXUXE and hold.

ASOS 135.325	KANSAS CITY APP CON 118.9 251.075	NEW CENTURY TOWER ★ 133.0 (CTAF) 0	GND CON 124.3	UNICOM 122.95
------------------------	---------------------------------------------	----------------------------------------------	-------------------------	-------------------------



3100 ↑	AXUXE 				
CATEGORY	A	B	C	D	
LPV DA	1337-1		250 (300-1)		
LNAV/ VNAV DA	1350-1		263 (300-1)		
LNAV MDA	1540-1	453 (500-1)	1540-1 ³ / ₈	453 (500-1 ³ / ₈)	
 CIRCLING	1560-1	473 (500-1)	1580-1 ¹ / ₂ 493 (500-1 ¹ / ₂)	1640-2 553 (600-2)	

NC-2, 10 JUL 2025 to 07 AUG 2025

NC-2, 10 JUL 2025 to 07 AUG 2025