

LOC/DME I-XD	APP CRS	Rwy Idg	7339
110.9	356°	TDZE	1067
Chan 46		Apt Elev	1087

ILS or LOC RWY 36  
NEW CENTURY AIRCENTER (IXD)

**DME required.**  
For inop ALS, increase S-LOC 36 Cat C/D visibility to 1 SM.

**MALSR**

**MISSED APPROACH:** Climb to 2700 then climbing left turn to 4000 on TOP VORTAC R-107 to RUGBB/MCI 25 DME and hold.

ASOS 135.325	KANSAS CITY APP CON 118.9 251.075	NEW CENTURY TOWER★ 133.0 (CTAF) 0	GND CON 124.3	UNICOM 122.95
-----------------	--------------------------------------	--------------------------------------	------------------	------------------

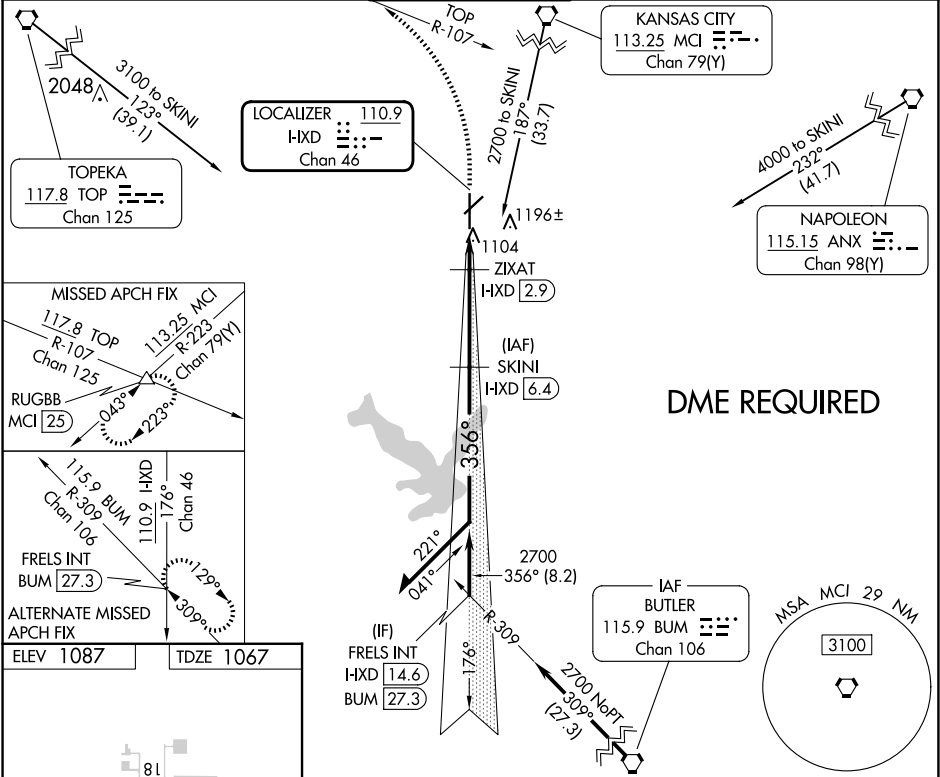


Diagram showing the 2700ft and 4000ft altitudes with R-107 and RUGBB MCI 25. A note says '\*LOC only.'

Diagram showing the 2700ft and 4000ft altitudes with R-107 and RUGBB MCI 25. A note says '\*LOC only.'

Diagram showing the 2700ft and 4000ft altitudes with R-107 and RUGBB MCI 25. A note says '\*LOC only.'

Diagram showing the 2700ft and 4000ft altitudes with R-107 and RUGBB MCI 25. A note says '\*LOC only.'

Diagram showing the 2700ft and 4000ft altitudes with R-107 and RUGBB MCI 25. A note says '\*LOC only.'

Diagram showing the 2700ft and 4000ft altitudes with R-107 and RUGBB MCI 25. A note says '\*LOC only.'

Diagram showing the 2700ft and 4000ft altitudes with R-107 and RUGBB MCI 25. A note says '\*LOC only.'

Diagram showing the 2700ft and 4000ft altitudes with R-107 and RUGBB MCI 25. A note says '\*LOC only.'

Diagram showing the 2700ft and 4000ft altitudes with R-107 and RUGBB MCI 25. A note says '\*LOC only.'

Diagram showing the 2700ft and 4000ft altitudes with R-107 and RUGBB MCI 25. A note says '\*LOC only.'

Diagram showing the 2700ft and 4000ft altitudes with R-107 and RUGBB MCI 25. A note says '\*LOC only.'

Diagram showing the 2700ft and 4000ft altitudes with R-107 and RUGBB MCI 25. A note says '\*LOC only.'

Diagram showing the 2700ft and 4000ft altitudes with R-107 and RUGBB MCI 25. A note says '\*LOC only.'

Diagram showing the 2700ft and 4000ft altitudes with R-107 and RUGBB MCI 25. A note says '\*LOC only.'

Diagram showing the 2700ft and 4000ft altitudes with R-107 and RUGBB MCI 25. A note says '\*LOC only.'

Diagram showing the 2700ft and 4000ft altitudes with R-107 and RUGBB MCI 25. A note says '\*LOC only.'

Diagram showing the 2700ft and 4000ft altitudes with R-107 and RUGBB MCI 25. A note says '\*LOC only.'

Diagram showing the 2700ft and 4000ft altitudes with R-107 and RUGBB MCI 25. A note says '\*LOC only.'

Diagram showing the 2700ft and 4000ft altitudes with R-107 and RUGBB MCI 25. A note says '\*LOC only.'

Diagram showing the 2700ft and 4000ft altitudes with R-107 and RUGBB MCI 25. A note says '\*LOC only.'

Diagram showing the 2700ft and 4000ft altitudes with R-107 and RUGBB MCI 25. A note says '\*LOC only.'

Diagram showing the 2700ft and 4000ft altitudes with R-107 and RUGBB MCI 25. A note says '\*LOC only.'

Diagram showing the 2700ft and 4000ft altitudes with R-107 and RUGBB MCI 25. A note says '\*LOC only.'

Diagram showing the 2700ft and 4000ft altitudes with R-107 and RUGBB MCI 25. A note says '\*LOC only.'

Diagram showing the 2700ft and 4000ft altitudes with R-107 and RUGBB MCI 25. A note says '\*LOC only.'

Diagram showing the 2700ft and 4000ft altitudes with R-107 and RUGBB MCI 25. A note says '\*LOC only.'

Diagram showing the 2700ft and 4000ft altitudes with R-107 and RUGBB MCI 25. A note says '\*LOC only.'

Diagram showing the 2700ft and 4000ft altitudes with R-107 and RUGBB MCI 25. A note says '\*LOC only.'

Diagram showing the 2700ft and 4000ft altitudes with R-107 and RUGBB MCI 25. A note says '\*LOC only.'

Diagram showing the 2700ft and 4000ft altitudes with R-107 and RUGBB MCI 25. A note says '\*LOC only.'

Diagram showing the 2700ft and 4000ft altitudes with R-107 and RUGBB MCI 25. A note says '\*LOC only.'

Diagram showing the 2700ft and 4000ft altitudes with R-107 and RUGBB MCI 25. A note says '\*LOC only.'

Diagram showing the 2700ft and 4000ft altitudes with R-107 and RUGBB MCI 25. A note says '\*LOC only.'

Diagram showing the 2700ft and 4000ft altitudes with R-107 and RUGBB MCI 25. A note says '\*LOC only.'

Diagram showing the 2700ft and 4000ft altitudes with R-107 and RUGBB MCI 25. A note says '\*LOC only.'

Diagram showing the 2700ft and 4000ft altitudes with R-107 and RUGBB MCI 25. A note says '\*LOC only.'

Diagram showing the 2700ft and 4000ft altitudes with R-107 and RUGBB MCI 25. A note says '\*LOC only.'

Diagram showing the 2700ft and 4000ft altitudes with R-107 and RUGBB MCI 25. A note says '\*LOC only.'

Diagram showing the 2700ft and 4000ft altitudes with R-107 and RUGBB MCI 25. A note says '\*LOC only.'

Diagram showing the 2700ft and 4000ft altitudes with R-107 and RUGBB MCI 25. A note says '\*LOC only.'

Diagram showing the 2700ft and 4000ft altitudes with R-107 and RUGBB MCI 25. A note says '\*LOC only.'

Diagram showing the 2700ft and 4000ft altitudes with R-107 and RUGBB MCI 25. A note says '\*LOC only.'

Diagram showing the 2700ft and 4000ft altitudes with R-107 and RUGBB MCI 25. A note says '\*LOC only.'

Diagram showing the 2700ft and 4000ft altitudes with R-107 and RUGBB MCI 25. A note says '\*LOC only.'

Diagram showing the 2700ft and 4000ft altitudes with R-107 and RUGBB MCI 25. A note says '\*LOC only.'

Diagram showing the 2700ft and 4000ft altitudes with R-107 and RUGBB MCI 25. A note says '\*LOC only.'

Diagram showing the 2700ft and 4000ft altitudes with R-107 and RUGBB MCI 25. A note says '\*LOC only.'

Diagram showing the 2700ft and 4000ft altitudes with R-107 and RUGBB MCI 25. A note says '\*LOC only.'

Diagram showing the 2700ft and 4000ft altitudes with R-107 and RUGBB MCI 25. A note says '\*LOC only.'

Diagram showing the 2700ft and 4000ft altitudes with R-107 and RUGBB MCI 25. A note says '\*LOC only.'

Diagram showing the 2700ft and 4000ft altitudes with R-107 and RUGBB MCI 25. A note says '\*LOC only.'

Diagram showing the 2700ft and 4000ft altitudes with R-107 and RUGBB MCI 25. A note says '\*LOC only.'

Diagram showing the 2700ft and 4000ft altitudes with R-107 and RUGBB MCI 25. A note says '\*LOC only.'

Diagram showing the 2700ft and 4000ft altitudes with R-107 and RUGBB MCI 25. A note says '\*LOC only.'

Diagram showing the 2700ft and 4000ft altitudes with R-107 and RUGBB MCI 25. A note says '\*LOC only.'

Diagram showing the 2700ft and 4000ft altitudes with R-107 and RUGBB MCI 25. A note says '\*LOC only.'

Diagram showing the 2700ft and 4000ft altitudes with R-107 and RUGBB MCI 25. A note says '\*LOC only.'

Diagram showing the 2700ft and 4000ft altitudes with R-107 and RUGBB MCI 25. A note says '\*LOC only.'

Diagram showing the 2700ft and 4000ft altitudes with R-107 and RUGBB MCI 25. A note says '\*LOC only.'

Diagram showing the 2700ft and 4000ft altitudes with R-107 and RUGBB MCI 25. A note says '\*LOC only.'

Diagram showing the 2700ft and 4000ft altitudes with R-107 and RUGBB MCI 25. A note says '\*LOC only.'

Diagram showing the 2700ft and 4000ft altitudes with R-107 and RUGBB MCI 25. A note says '\*LOC only.'

Diagram showing the 2700ft and 4000ft altitudes with R-107 and RUGBB MCI 25. A note says '\*LOC only.'

Diagram showing the 2700ft and 4000ft altitudes with R-107 and RUGBB MCI 25. A note says '\*LOC only.'

Diagram showing the 2700ft and 4000ft altitudes with R-107 and RUGBB MCI 25. A note says '\*LOC only.'

Diagram showing the 2700ft and 4000ft altitudes with R-107 and RUGBB MCI 25. A note says '\*LOC only.'

Diagram showing the 2700ft and 4000ft altitudes with R-107 and RUGBB MCI 25. A note says '\*LOC only.'

Diagram showing the 2700ft and 4000ft altitudes with R-107 and RUGBB MCI 25. A note says '\*LOC only.'

Diagram showing the 2700ft and 4000ft altitudes with R-107 and RUGBB MCI 25. A note says '\*LOC only.'

Diagram showing the 2700ft and 4000ft altitudes with R-107 and RUGBB MCI 25. A note says '\*LOC only.'

Diagram showing the 2700ft and 4000ft altitudes with R-107 and RUGBB MCI 25. A note says '\*LOC only.'

Diagram showing the 2700ft and 4000ft altitudes with R-107 and RUGBB MCI 25. A note says '\*LOC only.'

Diagram showing the 2700ft and 4000ft altitudes with R-107 and RUGBB MCI 25. A note says '\*LOC only.'

Diagram showing the 2700ft and 4000ft altitudes with R-107 and RUGBB MCI 25. A note says '\*LOC only.'

Diagram showing the 2700ft and 4000ft altitudes with R-107 and RUGBB MCI 25. A note says '\*LOC only.'

Diagram showing the 2700ft and 4000ft altitudes with R-107 and RUGBB MCI 25. A note says '\*LOC only.'

Diagram showing the 2700ft and 4000ft altitudes with R-107 and RUGBB MCI 25. A note says '\*LOC only.'

Diagram showing the 2700ft and 4000ft altitudes with R-107 and RUGBB MCI 25. A note says '\*LOC only.'

Diagram showing the 2700ft and 4000ft altitudes with R-107 and RUGBB MCI 25. A note says '\*LOC only.'

Diagram showing the 2700ft and 4000ft altitudes with R-107 and RUGBB MCI 25. A note says '\*LOC only.'

Diagram showing the 2700ft and 4000ft altitudes with R-107 and RUGBB MCI 25. A note says '\*LOC only.'

Diagram showing the 2700ft and 4000ft altitudes with R-107 and RUGBB MCI 25. A note says '\*LOC only.'

Diagram showing the 2700ft and 4000ft altitudes with R-107 and RUGBB MCI 25. A note says '\*LOC only.'

Diagram showing the 2700ft and 4000ft altitudes with R-107 and RUGBB MCI 25. A note says '\*LOC only.'

Diagram showing the 2700ft and 4000ft altitudes with R-107 and RUGBB MCI 25. A note says '\*LOC only.'

Diagram showing the 2700ft and 4000ft altitudes with R-107 and RUGBB MCI 25. A note says '\*LOC only.'

Diagram showing the 2700ft and 4000ft altitudes with R-107 and RUGBB MCI 25. A note says '\*LOC only.'

Diagram showing the 2700ft and 4000ft altitudes with R-107 and RUGBB MCI 25. A note says '\*LOC only.'

Diagram showing the 2700ft and 4000ft altitudes with R-107 and RUGBB MCI 25. A note says '\*LOC only.'

Diagram showing the 2700ft and 4000ft altitudes with R-107 and RUGBB MCI 25. A note says '\*LOC only.'

Diagram showing the 2700ft and 4000ft altitudes with R-107 and RUGBB MCI 25. A note says '\*LOC only.'

Diagram showing the 2700ft and 4000ft altitudes with R-107 and RUGBB MCI 25. A note says '\*LOC only.'

Diagram showing the 2700ft and 4000ft altitudes with R-107 and RUGBB MCI 25. A note says '\*LOC only.'

Diagram showing the 2700ft and 4000ft altitudes with R-107 and RUGBB MCI 25. A note says '\*LOC only.'

Diagram showing the 2700ft and 4000ft altitudes with R-107 and RUGBB MCI 25. A note says '\*LOC only.'

Diagram showing the 2700ft and 4000ft altitudes with R-107 and RUGBB MCI 25. A note says '\*LOC only.'

Diagram showing the 2700ft and 4000ft altitudes with R-107 and RUGBB MCI 25. A note says '\*LOC only.'

Diagram showing the 2700ft and 4000ft altitudes with R-107 and RUGBB MCI 25. A note says '\*LOC only.'

Diagram showing the 2700ft and 4000ft altitudes with R-107 and RUGBB MCI 25. A note says '\*LOC only.'

Diagram showing the 2700ft and 4000ft altitudes with R-107 and RUGBB MCI 25. A note says '\*LOC only.'

Diagram showing the 2700ft and 4000ft altitudes with R-107 and RUGBB MCI 25. A note says '\*LOC only.'

Diagram showing the 2700ft and 4000ft altitudes with R-107 and RUGBB MCI 25. A note says '\*LOC only.'

Diagram showing the 2700ft and 4000ft altitudes with R-107 and RUGBB MCI 25. A note says '\*LOC only.'

Diagram showing the 2700ft and 4000ft altitudes with R-107 and RUGBB MCI 25. A note says '\*LOC only.'

Diagram showing the 2700ft and 4000ft altitudes with R-107 and RUGBB MCI 25. A note says '\*LOC only.'

Diagram showing the 2700ft and 4000ft altitudes with R-107 and RUGBB MCI 25. A note says '\*LOC only.'

Diagram showing the 2700ft and 4000ft altitudes with R-107 and RUGBB MCI 25. A note says '\*LOC only.'

Diagram showing the 2700ft and 4000ft altitudes with R-107 and RUGBB MCI 25. A note says '\*LOC only.'

Diagram showing the 2700ft and 4000ft altitudes with R-107 and RUGBB MCI 25. A note says '\*LOC only.'

Diagram showing the 2700ft and 4000ft altitudes with R-107 and RUGBB MCI 25. A note says '\*LOC only.'

Diagram showing the 2700ft and 4000ft altitudes with R-107 and RUGBB MCI 25. A note says '\*LOC only.'

Diagram showing the 2700ft and 4000ft altitudes with R-107 and RUGBB MCI 25. A note says '\*LOC only.'

Diagram showing the 2700ft