

WAAS CH 56202 W35A	APP CRS 356°	Rwy Idg 9800 TDZE 1276 Apt Elev 1296
--	------------------------	---

RNAV (GPS) Y RWY 35L

OKC WILL ROGERS INTL (OKC)

⚠

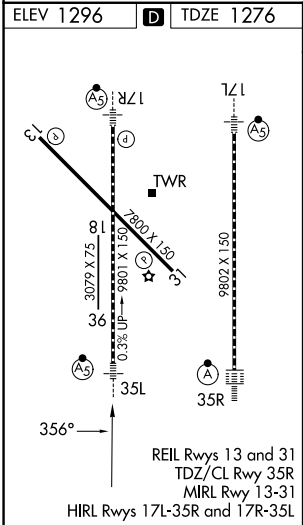
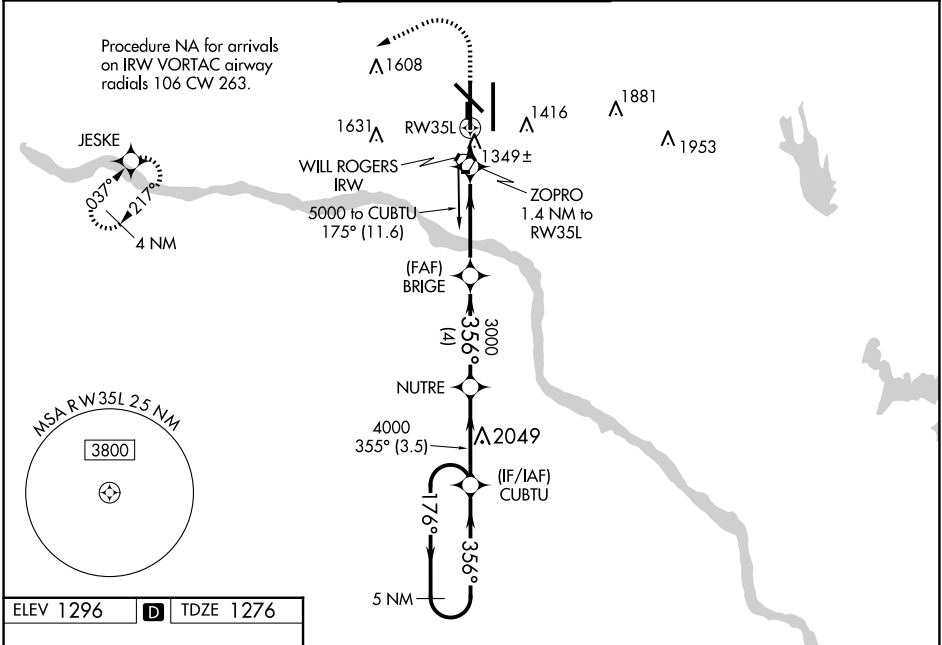
ASR




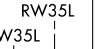

For uncompensated Baro-VNAV systems, LNAV/VNAV NA below -12°C (11°F) or above 54°C (130°F). DME/DME RNP-0.3 NA. For inop MALSR, increase LPV and LNAV/VNAV Cat E visibility to RVR 4000. Increase LNAV Cat A/B visibility to RVR 5500 and Cat C/D/E to RVR 5000. Simultaneous approach authorized with Rwy 35R. LNAV procedure NA during simultaneous operations. Use of FD or AP providing RNAV track guidance required during simultaneous operations. **RVR 1800 authorized with use of FD or AP or HUD to DA.

MALSR

MISSED APPROACH:
Climb to 2000 then climbing left turn to 5000 direct JESKE and hold.

D-ATIS 125.85	OKC CITY APP CON 124.6 266.8	ROGERS TOWER 119.35 269.45	GND CON 121.9 348.6	CLNC DEL 124.35
-------------------------	--	--------------------------------------	-------------------------------	---------------------------



2000	5000	JESKE				
						
* LNAV only.			ZOPRO 1.4 NM to RW35L	BRIGE 3000	NUTRE	CUBTU 5 NM Holding Pattern
			* 0.9 NM to RW35L	* 1740	3000	176° → ← 356° 5000
0.9			0.5	3.9 NM	4 NM	3.5 NM
CATEGORY			A	B	C	D E
LPV DA**		1476/24 200 (200-½)				
LNAV/VNAV DA		1543/24 267 (300-½)				
LNAV MDA		1600/24 324 (400-½)		1600/26 324 (400-½)		
 CIRCLING	1740-1 444 (500-1)	1760-1 464 (500-1)	1960-1¾ 664 (700-1¾)	2000-2¼ 704 (800-2¼)	2240-3 944 (1000-3)	