

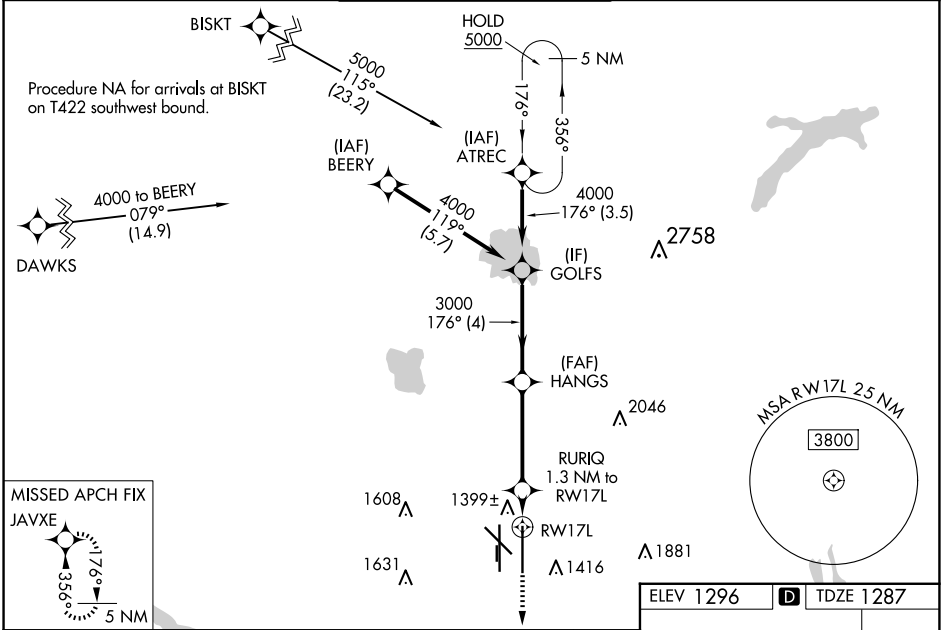
WAAS CH 56503 W17B	APP CRS 176°	Rwy Idg 9802 TDZE 1287 Apt Elev 1296
--	------------------------	---

RNAV (GPS) Y RWY 17L

OKC WILL ROGERS INTL (OKC)

RNP APCH-GPS.		
<div><div>ASR</div><div><div>Simultaneous approach authorized. LNAV procedure NA during simultaneous operations. Use of FD or AP required during simultaneous operations. For uncompassed Baro-VNAV systems, LNAV/VNAV NA below -12°C or above 54°C. For inop ALS, increase LPV Cat E visibility to RVR 4000, LNAV/VNAV Cat E visibility to RVR 4500, and LNAV all Cats visibility to RVR 5500. * RVR 1800 authorized with use of FD or AP or HUD to DA.</div></div></div>	<div><div>MALSR</div><div><div><div></div></div></div></div>	<div><div>MISSED APPROACH:</div><div>Climb to 5000 direct JAVXE and hold, continue climb-in-hold to 5000.</div></div>

D-ATIS 125.85	OKC CITY APP CON 124.6 266.8	ROGERS TOWER 119.35 269.45	GND CON 121.9 348.6	CLNC DEL 124.35
-------------------------	--	--------------------------------------	-------------------------------	---------------------------



	GOLFS	HANGS	RURIQ 1.3 NM to RW17L	RW17L	JAVXE
	4000	3000	1740		
	GP 3.00° TCH 59				
	4 NM	3.9 NM	1.3 NM		
CATEGORY	A	B	C	D	E
LPV DA*	1487/24 200 (200-½)				
LNAV/VNAV DA	1590/24 303 (300-½)				
LNAV MDA	1660/24	373 (400-½)	1660/35	373 (400-¾)	
CIRCLING	1740-1 444 (500-1)	1760-1 464 (500-1)	1960-1¾ 664 (700-1¾)	2000-2¼ 704 (800-2¼)	2240-3 944 (1000-3)

