

APP CRS
176°

Rwy Idg
9800

TDZE
1282

Apt Elev
1296

RNAV (RNP) Z RWY 17R
OKC WILL ROGERS INTL (OKC)

RNP AR APCH.

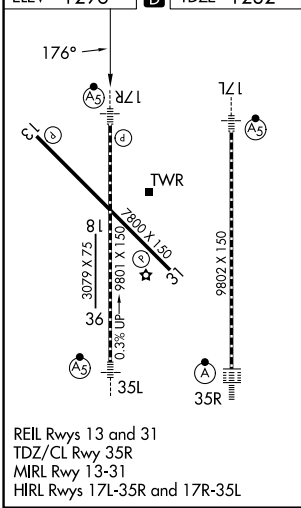
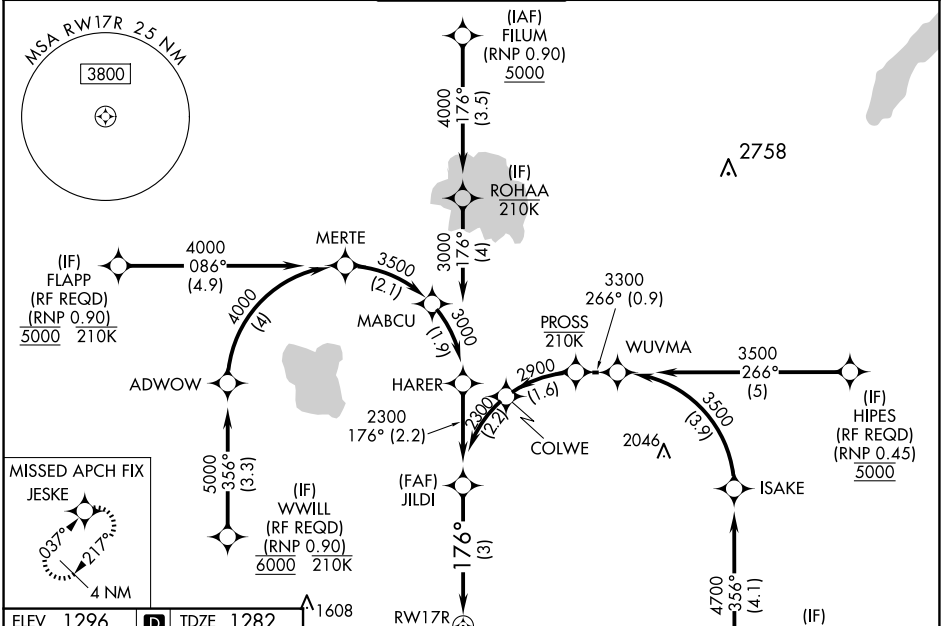
ASR

For uncompensated Baro-VNAV systems, procedure NA below -13°C or above 54°C.
For inop ALS, increase RNP 0.20 all Cnts visibility to RVR 4500 and RNP 0.30 all Cnts visibility to RVR 6000. Simultaneous approach authorized. Use of FD or AP required during simultaneous operations.

MALSR

MISSED APPROACH: Climb to 2000 then climbing right turn to 3000 direct JESKE and hold.

D-ATIS 125.85	OKE CITY APP CON 124.6 266.8	ROGERS TOWER 119.35 269.45	GND CON 121.9 348.6	CLNC DEL 124.35
-------------------------	--	--------------------------------------	-------------------------------	---------------------------



VGSI and RNAV glidepath not coincident (VGSI Angle 3.00/TCH 60).

2000 3000 JESKE

GP 3.00° TCH 55

See planview for multiple IF locations.

CATEGORY	A	B	C	D
RNP 0.20 DA		1559/24	277 (300-½)	
RNP 0.30 DA		1677/35	395 (400-⅝)	

AUTHORIZATION REQUIRED