

LOC/DME I-LIK  
**110.7**  
Chan **44**

APP CRS  
**356°**

Rwy Idg **9800**  
TDZE **1276**  
Apt Elev **1296**

ILS or LOC RWY 35L

OKC WILL ROGERS INTL (OKC)

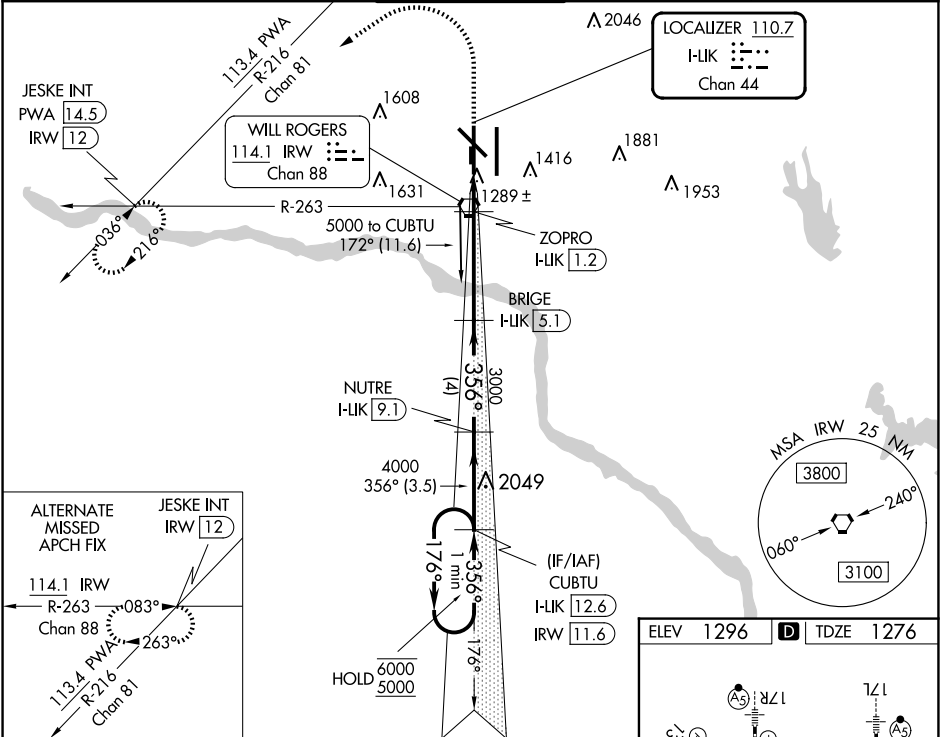
DME required.

Simultaneous approach authorized. For inop ALS, increase S-ILS 35L Cat E visibility to RVR 4000 and S-LOC 35L Cats C, D, and E visibility to RVR 5500.  
\*RVR 1800 authorized with use of FD or AP or HUD to DA.

MALSR  
AS

MISSED APPROACH: Climb to 2000 then climbing left turn to 3000 on heading 291° and on PWA VOR/DME R-216 to JESKE INT/PWA 14.5 DME and hold.

D-ATIS <b>125.85</b>	OKE CITY APP CON <b>124.6 266.8</b>	ROGERS TOWER <b>119.35 269.45</b>	GND CON <b>121.9 348.6</b>	CLNC DEL <b>124.35</b>
-------------------------	--	--------------------------------------	-------------------------------	---------------------------



One Minute Holding Pattern					
CUBTU I-LIK 12.6					
NUTRE I-LIK 9.1					
BRIGE I-LIK 5.1					
ZOPRO I-LIK 1.2					
I-LIK DME ANTENNA I-LIK 0.2					
Use I-LIK DME when on the localizer course.					
GS 3.00°					
TCH 49					
3.5 NM 4 NM 3.9 NM 1.4 NM					
CATEGORY	A	B	C	D	E
S-ILS 35L*	1476/24 200 (200-½)				
S-LOC 35L	1640/24	364 (400-½)	1640/35	364 (400-¾)	
CIRCLING	1740-1 444 (500-1)	1760-1 464 (500-1)	1960-1¾ 664 (700-1¾)	2000-2¼ 704 (800-2¼)	2240-3 944 (1000-3)

