




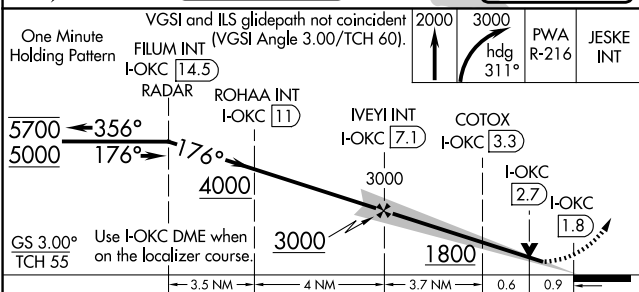
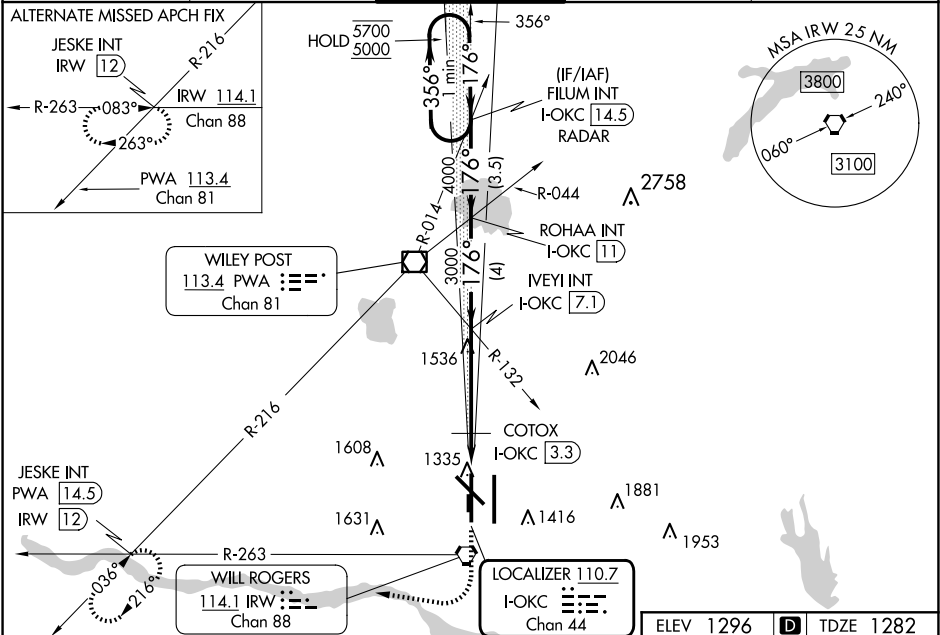
LOC/DME I-OKC	APP CRS	Rwy Idg	9800
110.7	176°	TDZE	1282
Chan 44		Apt Elev	1296

ILS or LOC RWY 17R

OKC WILL ROGERS INTL (OKC)

RADAR required for procedure entry.			
	Simultaneous approach authorized. For inop ALS, increase S-ILS 17R Cat E visibility to RVR 4000; increase S-LOC 17R Cats C, D and E visibilities to 1½ SM. * RVR 1800 authorized with use of FD or AP or HUD to DA.		MISSED APPROACH: Climb to 2000 then climbing right turn to 3000 on heading 311° and on PWA VOR/DME R-216 to JESKE INT/PWA 14.5 DME and hold.
			
ASR			

D-ATIS	OKE CITY APP CON	ROGERS TOWER	GND CON	CLNC DEL
125.85	124.6 266.8	119.35 269.45	121.9 348.6	124.35



CATEGORY	A	B	C	D	E
S-ILS 17R*	1482/24		200 (200-½)		
S-LOC 17R	1800/24	518 (600-½)	1800/55		518 (600-1)
CIRCLING	1800-1	504 (600-1)	1960-1¾	2000-2¼	2240-3
			664 (700-1¾)	704 (800-2¼)	944 (1000-3)
COTOX FIX MINIMUMS					
S-LOC 17R	1620/24	338 (400-½)	1620/26		338 (400-½)
CIRCLING	1740-1	1760-1	1960-1¾	2000-2¼	2240-3
	444 (500-1)	464 (500-1)	664 (700-1¾)	704 (800-2¼)	944 (1000-3)

