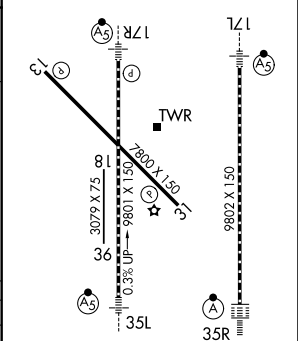


ILS RWY 17R (SA CAT II)  
OKC WILL ROGERS INTL (OKC)

**MISSED APPROACH:** Climb to 2000 then climbing right turn to 3000 on heading 311° and on PWA VOR/DME R-216 to JESKE INT/PWA 14.5 DME and hold.



SC-1, 10 JUL 2025 to 07 AUG 2025



SA CATEGORY II ILS - SPECIAL AIRCREW  
& AIRCRAFT CERTIFICATION REQUIRED

TDZ/CL Rwy 35R  
MIRL Rwy 13-31  
REIL Rwy 13 and 31  
HIRL Rwy 17L-35R and 17R-35L