
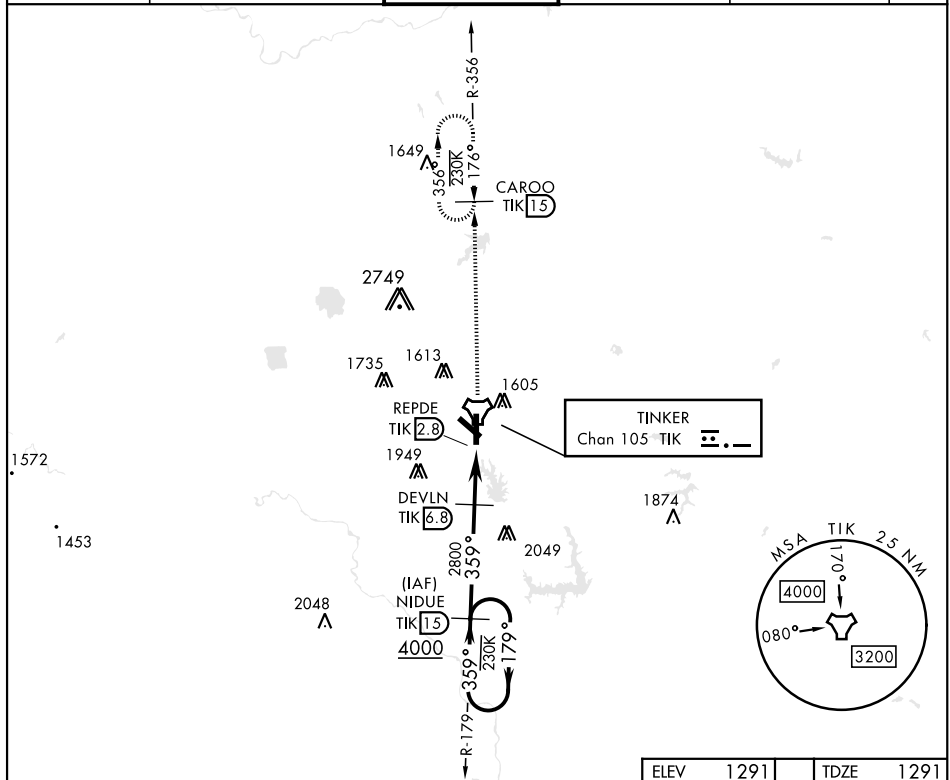
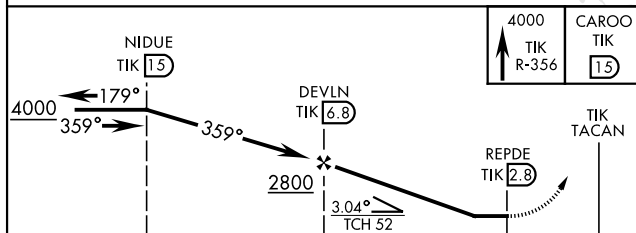


TACAN Z RWY 36

TACAN TIK Chan <b>105</b>	APCH CRS <b>359°</b>	Rwy Idg <b>11,100</b> TDZE <b>1291</b> Arprt Elev <b>1291</b>	[USAF]	TINKER AFB	(KTIK)
<b>▼</b> * When ALS inop, increase CAT A8 RVR to 50 and vis to 1 mile. CAT GDE increase vis by ½ mile. <b>**</b> * AT E Circling not to be used in sector S of Rwy 13-31 and W of Rwy 18-36. Circling NA to Rwy 18.			ALSF-1 	MISSED APPROACH: Climb to 4000 on TIK TACAN R-356 to CAROO and hold.	
ATIS ★ <b>270.1</b>	OKE CITY APP CON <b>120.45 288.325</b>	TOWER <b>124.45 251.05</b>	GND CON <b>121.8 275.8</b>	CLNC DEL <b>119.7 335.8</b>	ASR



EMERG SAFE ALT 100 NM 4700



CATEGORY	A	B	C	D	E
S-36*	1720/24	429 (500-½)	1720/40	429 (500-¾)	
CIRCLING**	1820-1	529 (600-1)	1960-1 669 (700-1¼)	1960-2 669 (700-2)	1960-2½ 669 (700-2¼)

