

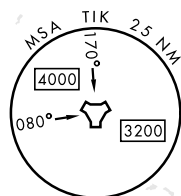
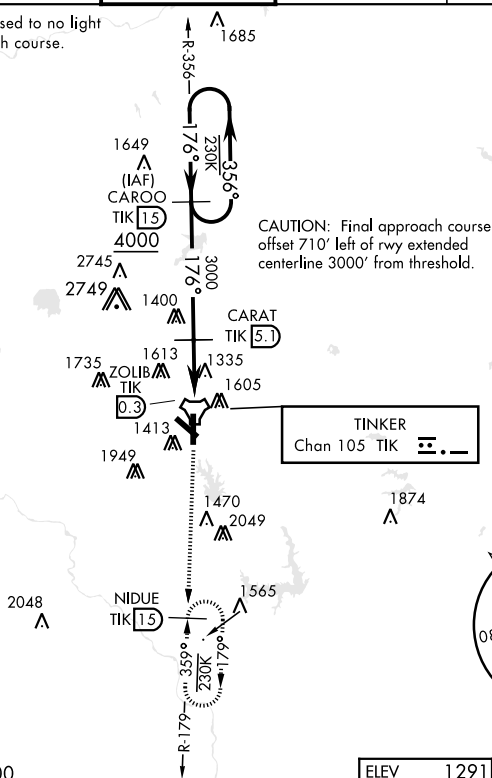


OKLAHOMA CITY, OKLAHOMA

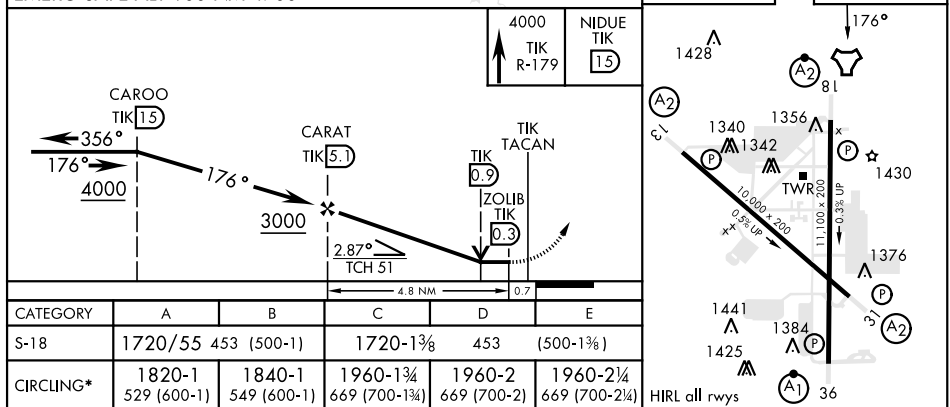
TACAN Z RWY 18

TACAN TIK Chan 105	APCH CRS 176°	Rwy Idg 11,100 TDZE 1267 Arprt Elev 1291	[USAF]	TINKER AFB (KTIK)		
<div> <div>▼</div> <div>* CAT E Circling NA in sector S of Rwy 13-31 and W of Rwy 18-36. Circling NA to Rwy 18.</div> </div>			<div> <div>SALSF</div> <div>   </div> </div>	<div> <div>MISSED APPROACH: Climb to 4000 on TIK TACAN R-179 to NIDUE and hold. Missed approach requires use of RNAV or ATC monitoring.</div> </div>		
<div> <div>ATIS ★</div> <div>270.1</div> </div>	<div> <div>OKE CITY APP CON</div> <div>124.2 336.4</div> </div>		<div> <div>TOWER</div> <div>124.45 251.05</div> </div>	<div> <div>GND CON</div> <div>121.8 275.8</div> </div>	<div> <div>CLNC DEL</div> <div>119.7 335.8</div> </div>	<div> <div>ASR</div> </div>

Straight-in minimum visibility increased to no light minimum due to offset final approach course.



EMERG SAFE ALT 100 NM 4700



OKLAHOMA CITY, OKLAHOMA

35°25'N-97°23'W

TINKER AFB (KTIK)

Amdt 5 20APR23

TACAN Z RWY 18

SC-1, 10 JUL 2025 to 07 AUG 2025

SC-1, 10 JUL 2025 to 07 AUG 2025