

OKLAHOMA CITY, OKLAHOMA

RNAV (GPS) RWY 36

|          |           |        |
|----------|-----------|--------|
| APCH CRS | Rwy Idg   | 11,100 |
| 356°     | TDZE      | 1291   |
|          | Arpt Elev | 1291   |

- (USAF)

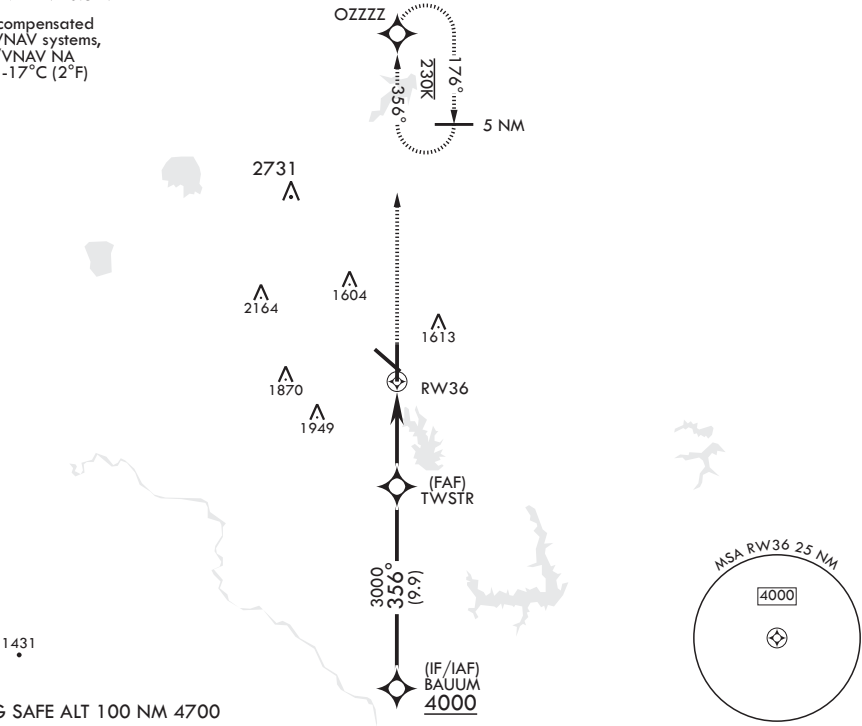
TINKER AFB (KTIK)

|   |  |  |
|---|--|--|
| <p>▼ * Cat E Circling not authorized in sector S of Rwy 13-31 and W of Rwy 18-36.</p> | <p>ALSIF-1</p>  | <p>MISSED APPROACH: Climb to 4000 direct OZZZ waypoint and hold.</p> |
|---|--|--|

|                |   |                        |                        |                         |     |
|----------------|---|------------------------|------------------------|-------------------------|-----|
| ATIS★<br>270.1 | OKE CITY APP CON/DEP CON<br>124.2 336.4 | TOWER<br>124.45 251.05 | GND CON<br>121.8 275.8 | CLNC DEL<br>119.7 335.8 | ASR |
|----------------|---|------------------------|------------------------|-------------------------|-----|

DME/DME RNP-0.3 NA

For uncompensated Baro-VNAV systems, LNAV/VNAV NA below -17°C (2°F)



EMERG SAFE ALT 100 NM 4700

BAUUM

4000

GP 3.00°  
TCH 50

VGSI and descent  
angles not coincident.

4000

OZZZ

ELEV 1291

TDZE 1291

356°

TWSTR

3000

1.3 NM to  
RW36

RW36

5.1 NM

81

1340

1342

TWR

1356

1376

1441

1425

36

BCN 1430

10,000 × 200

0.3% DOWN

11,100 × 200

0.3% UP

|              |                     |   |                    |                      |                      |
|--------------|---------------------|---|--------------------|----------------------|----------------------|
| CATEGORY     | A                   | B | C                  | D                    | E                    |
| LNAV/VNAV DA | 1739/53             |   | 448                | (500-1)              |                      |
| LNAV MDA     | 1740/24 449 (500-½) |   | 1740/45            | 449                  | (500-¾)              |
| CIRCLING*    | 1820-1 529 (600-1)  |   | 2000-2 709 (800-2) | 2040-2½ 749 (800-2½) | 2040-2¾ 749 (800-2¾) |

HIRL all rwys

356°

OKLAHOMA CITY, OKLAHOMA

35°25'N - 97°23'W

TINKER AFB (KTIK)

Amdt 1 13JUN24

RNAV (GPS) RWY 36

SC-1, 10 JUL 2025 to 07 AUG 2025

SC-1, 10 JUL 2025 to 07 AUG 2025