

LOC I-EVG	APCH CRS	Rwy Idg
111.7	126°	10,000
		TDZE 1241
		Arpt Elev 1291

[USAF]

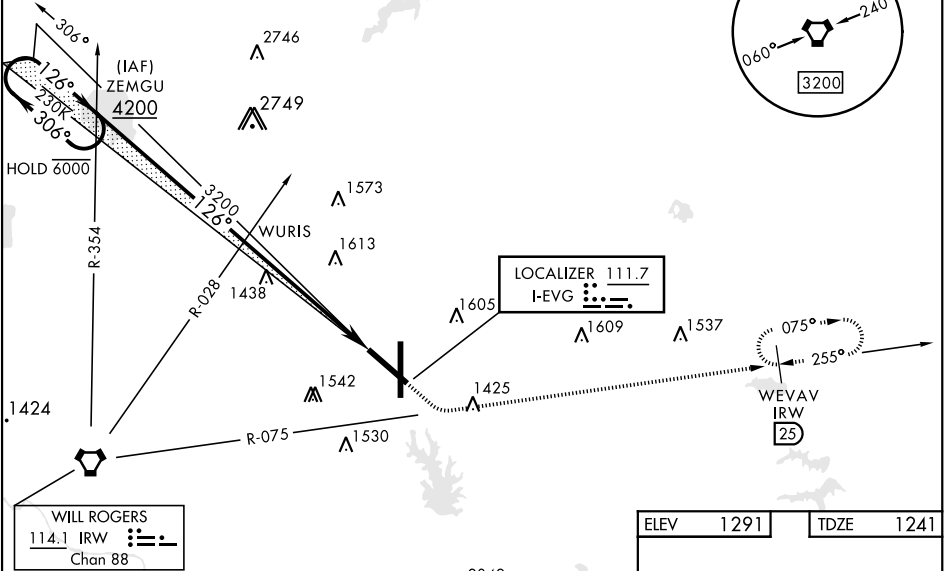
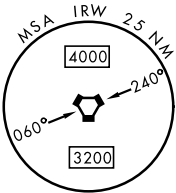
TINKER AFB (KTIK)

RADAR required.	SALS	MISSED APPROACH: Climb straight ahead to 2500, then left turn to intercept IRW R-075 to 25 DME (WEVAV) and hold at 3000.
▼ * When ALS inop, increase CAT AB RVR to 50 and vis to 1 mile, CAT C RVR to 60 and vis to 1¼ miles, CAT D vis to 1½ miles, CAT E vis to 1¾ miles.	A2	

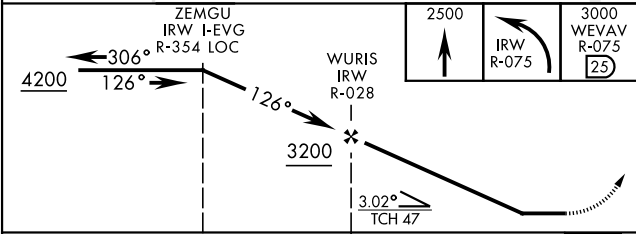
ATIS ★	OKE CITY APP CON	TOWER	GND CON	CLNC DEL	ASR
270.1	124.2 336.4	124.45 251.05	121.8 275.8	119.7 335.8	

** CAT E Circling not authorized in sector S of Rwy 13-31 and W of Rwy 18-36.

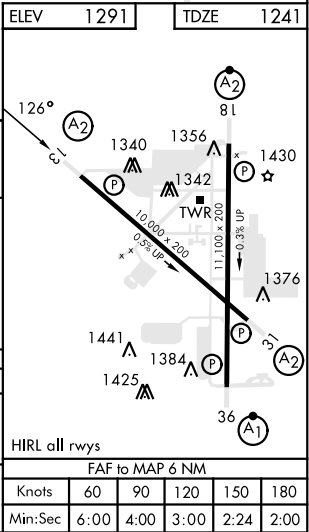
CAUTION: VFR Flyway from FAF to MAP, SFC to 3000 MSL.



EMERG SAFE ALT 100 NM 4700



CATEGORY	A	B	C	D	E
S-13 *	1740/40 499 (500-¾)		1740/50 499 (500-1)	1740/60 499 (500-1¼)	1740-1½ 499 (500-1½)
CIRCLING**	1880-1 589 (600-1)		1880-1½ 589 (600-1½)	1980-2¼ 689 (700-2¼)	2040-2¾ 749 (800-2¾)



SC-1, 10 JUL 2025 to 07 AUG 2025

SC-1, 10 JUL 2025 to 07 AUG 2025