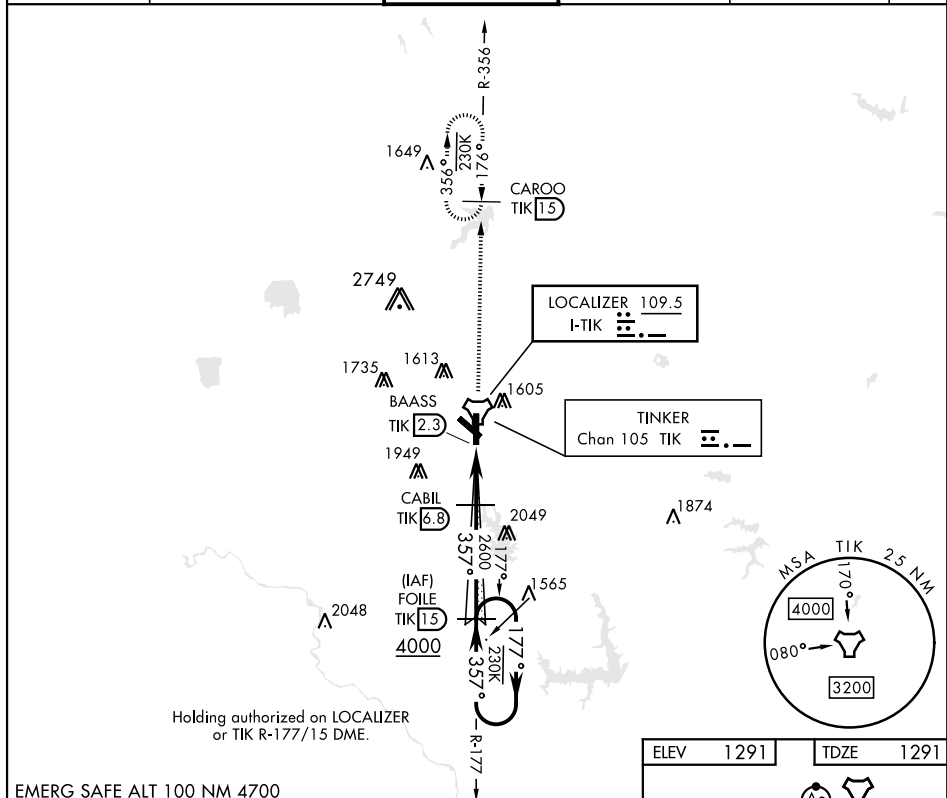
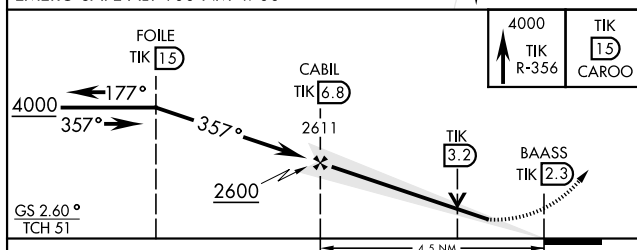


ILS or LOC/DME Z RWY 36

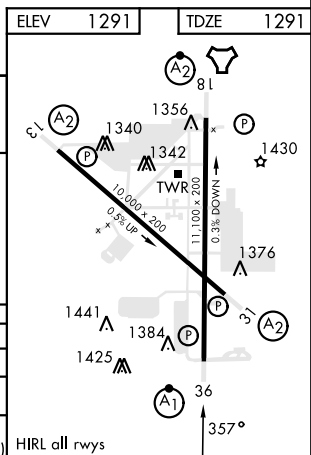
LOC I-TIK 109.5	APCH CRS 357°	Rwy Ldg 11,100 TDZE 1291 Arpt Elev 1291	[USAF]	ILS or LOC/DME Z RWY 36		
<p>▼ * When ALS inop, increase CAT ABC RVR to 50 and vis to 1 mile, CAT DE RVR to 60 and vis to 1 1/4 mile.</p> <p>** CAT E Circling NA to Rwy 18 and in sector S of Rwy 13-31 and W of Rwy 18-36.</p>			ALSF-1 	MISSED APPROACH: Climb to 4000 on TIK TACAN R-356 to CAROO and hold.		
ATIS ★ 270.1	OKE CITY APP CON 120.45 288.325	TOWER 124.45 251.05	GND CON 121.8 275.8	CLNC DEL 119.7 335.8	ASR	



EMERG SAFE ALT 100 NM 4700



CATEGORY	A	B	C	D	E
S-ILS 36	1491/24		200	(200-½)	
S-LOC 36 *	1680/24	389 (400-½)	1680/35 389 (400-¾)		
CIRCLING**	1820-1 529 (600-1)	1840-1 549 (600-1)	1960-1½ 669 (700-1½)	1960-2 669 (700-2)	1960-2½ 669 (700-2½)



OKLAHOMA CITY, OKLAHOMA

35°25'N-97°23'W

TINKER AFB (KTIK)

Amdt 5 13JUN24

ILS or LOC/DME Z RWY 36

SC-1, 10 JUL 2025 to 07 AUG 2025