

TACAN TIK Chan <b>105</b>	APCH CRS <b>176°</b>	Rwy Idg <b>11,100</b> TDZE <b>1267</b> Arprt Elev <b>1291</b>
------------------------------	-------------------------	---

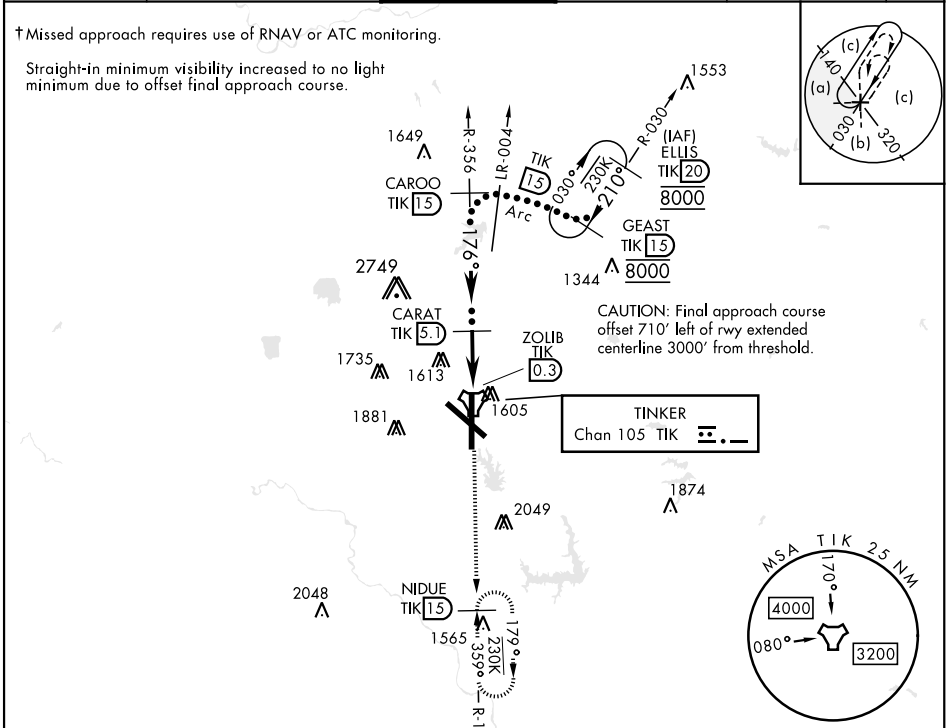
HI-TACAN Y RWY 18

[USAF]

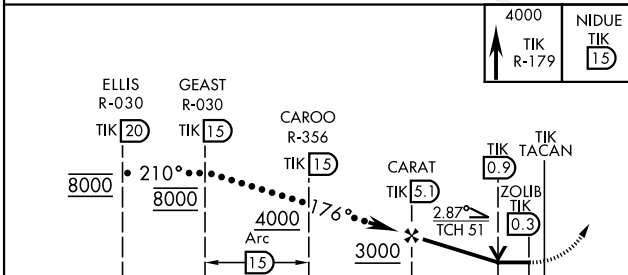
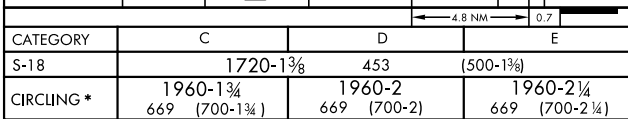
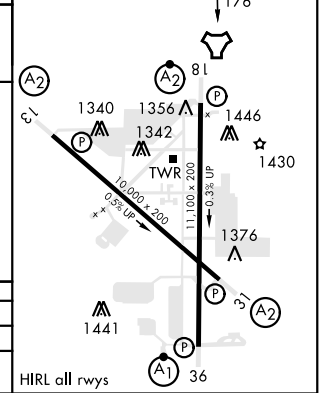
TINKER AFB (KTIK)

▼ *CAT E circling not authorized in sector S of Rwy 13-31. Circling not authorized to Rwy 18.	SALS 	† MISSED APPROACH: Climb to 4000 on TIK TACAN R-179 to NIDUE and hold.
---	---	--

ATIS ★ <b>270.1</b>	OKE CITY APP CON <b>124.2 336.4</b>	TOWER <b>124.45 251.05</b>	GND CON <b>121.8 275.8</b>	CLNC DEL <b>119.7 335.8</b>	ASR
------------------------	--	-------------------------------	-------------------------------	--------------------------------	-----



EMERG SAFE ALT 100 NM 4700

			ELEV 1291	TDZE 1267
				
CATEGORY	C	D	E	
S-18	1720-1 $\frac{3}{8}$	453	(500-1 $\frac{3}{8}$ )	
CIRCLING *	1960-1 $\frac{3}{4}$ 669 (700-1 $\frac{3}{4}$ )	1960-2 669 (700-2)	1960-2 $\frac{1}{4}$ 669 (700-2 $\frac{1}{4}$ )	

HI-TACAN Y RWY 18

SC-1, 10 JUL 2025 to 07 AUG 2025