

TINKER AFB (KTIK)

LOC I-TIK <u>109.5</u>	APCH CRS 357°	Rwy Idg 11,100 TDZE 1291 Arpt Elev 1291
----------------------------------	-------------------------	--

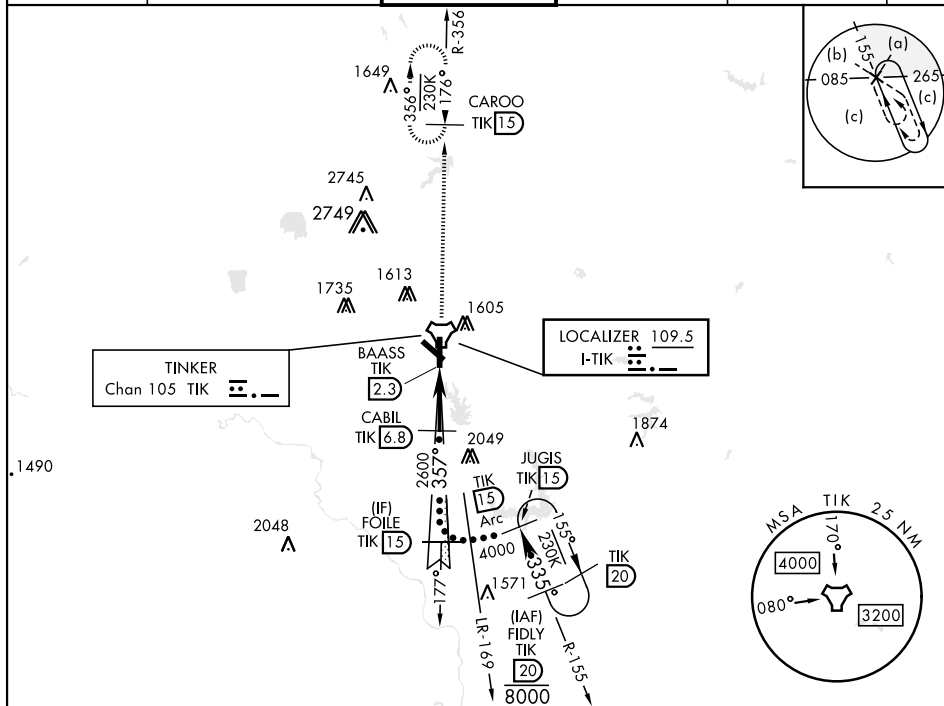
[USAF]

T * When ALS inop, increase CAT CDE RVR to 40 and vis to $\frac{3}{4}$ mile.
 ** When ALS inop, increase CAT CDE RVR to 45 and vis to $\frac{7}{8}$ mile.
 *** CAT E circling NA in sector S of Rwy 13-31.
 Circling not authorized to RWY 18.

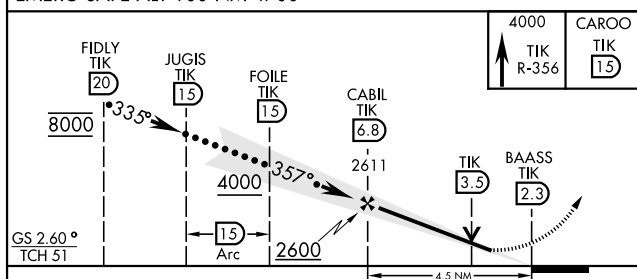
ALSF-1

MISSED APPROACH: Climb to 4000 on TIK R-356 to CAROO and hold.

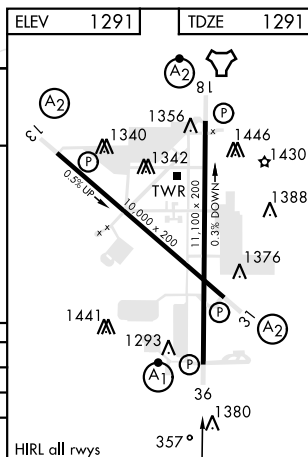
ATIS ★ 270.1	OKE CITY APP CON 120.45 288.325	TOWER 124.45 251.05	GND CON 121.8 275.8	CLNC DEL 119.7 335.8	ASR
-----------------	------------------------------------	------------------------	------------------------	-------------------------	-----



EMERG SAFE ALT 100 NM 4700



CATEGORY	C	D	E
S-ILS 36 *	1491/24	200	(200-½)
S-LOC 36 **	1680/35	389	(400-%)
CIRCLING ***	1960-1¼ 669 (700-1¼)	1960-2 669 (700-2)	1960-2¼ 669 (700-2¼)



OKLAHOMA CITY, OKLAHOMA

35°25'N-97°23'W

TINKER AFB (KTIK)

Amdt 6 13JUN24

HI-ILS or LOC/DME Y RWY 36