

HI-ILS or LOC/DME Y RWY 18

LOC I-FRJ
111.3

APCH CR
177 °

Rwy Idg	11,100
TDZE	1267
Arpt Elev	1291

[USAF]

TINKER AFB (KTIK)

T * When ALS inop, increase CAT CDE RVR to 55 and vis to 1 mile.
** CAT E circling NA in sector S of Rwy 13-31 and W of RWY 18. Circling NA to Rwy 18.

SALS

A_2

MISSED APPROACH: Climb to 4000 on TIK TACAN R-179 to NIDUE and hold.

ATIS ★
270.1

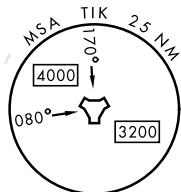
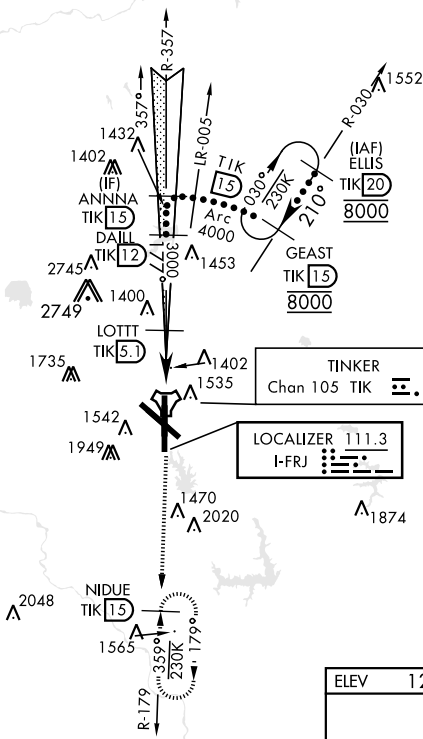
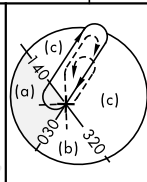
124.2 336.4

TOWER
124.45 25

GND CON
121.8 275.8

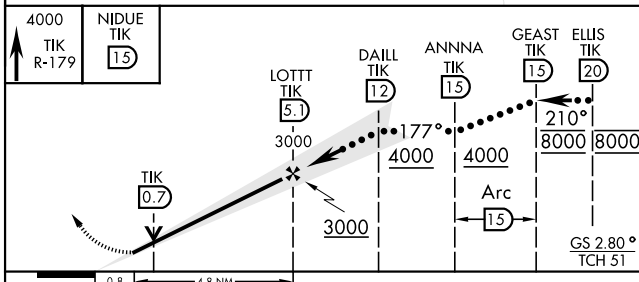
CLNC DEL
119.7 335.8

ASR

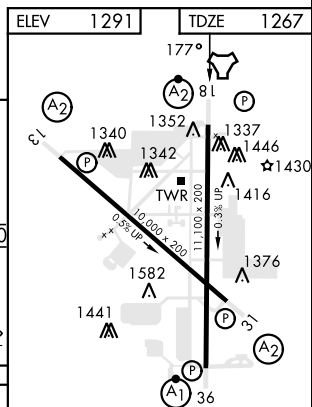


Localizer unusable within 0.4 NM
from threshold.
Localizer NA beyond 15° right of course.

EMERG SAFE ALT 100 NM 4700



CATEGORY	C	D	E
S-ILS 18	1467/40	200 (200-¾)	
S-LOC 18 *	1640/40	373 (400-¾)	
CIRCLING**	1960-1¼ 669 (700-1¼)	1960-2 669 (700-2)	1960-2¼ 669 (700-2¼)



HIRL all rwys

FAF to MAP 4.8 NM

Knots	120	140	160	180	200
Min:Sec	2:24	2:03	1:48	1:36	1:26

OKLAHOMA CITY, OKLAHOMA

35°25'N-97°23'W

TINKER AFB (KTIK)

Amdt 6 13JUN24

HI-ILS or LOC/DME Y RWY 18

SC-1, 10 JUL 2025 to 07 AUG 2025