

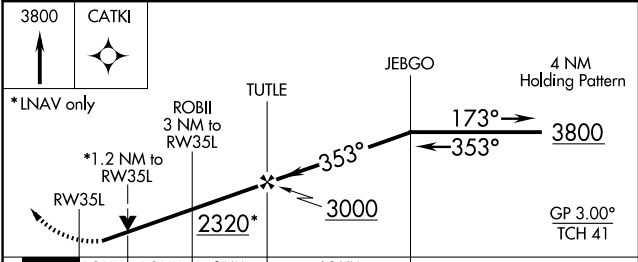
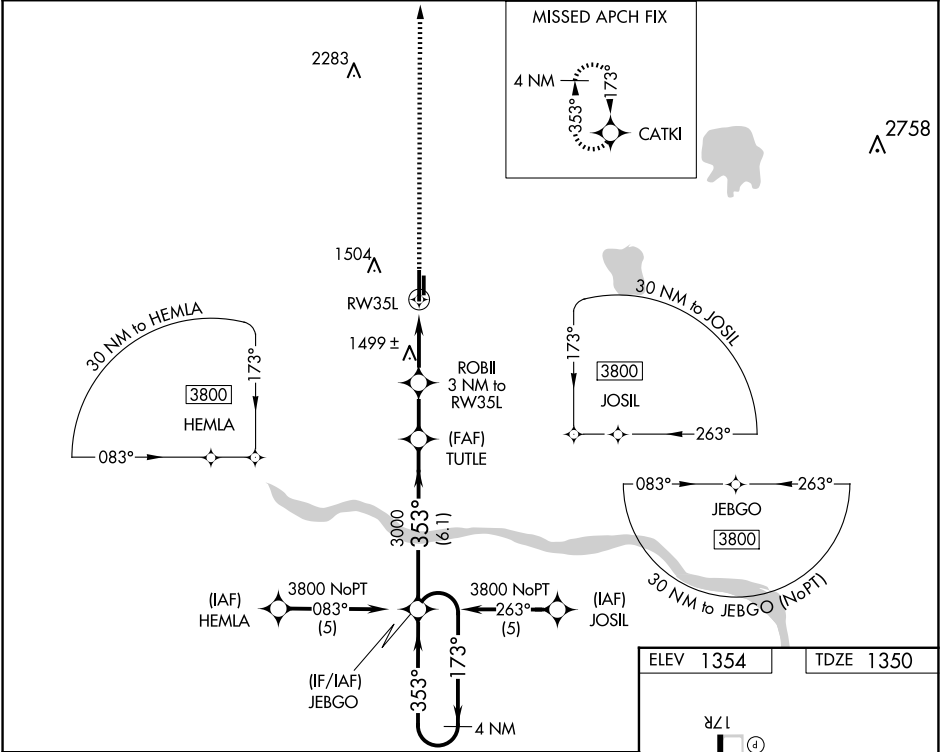
WAAS CH <b>86901</b> <b>W35A</b>	APP CRS <b>353°</b>	Rwy ldg <b>6014</b> TDZE <b>1350</b> Apt Elev <b>1354</b>
--	------------------------	---

RNAV (GPS) RWY 35L  
CLARENCE E PAGE MUNI (R/C/E)

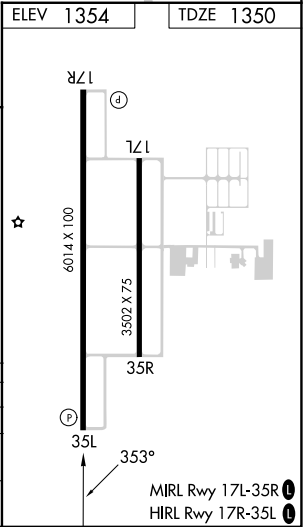
**⚠** DME/DME RNP-0.3 NA. Visibility reduction by helicopters NA. When local altimeter setting not received, use Wiley Post altimeter setting and increase all DA 29 feet and all MDA 40 feet and increase LPV all Cnts visibility ¼ mile. VDP NA when using Wiley Post altimeter setting.

MISSED APPROACH: Climb to 3800 direct CATKI and hold.

AWOS-3 <b>125.05</b>	OKE CITY APP CON <b>124.6 266.8</b>	UNICOM <b>123.0 (CTAF) 0</b>
-------------------------	--	---------------------------------



CATEGORY	A	B	C	D
LPV DA	1651-1	301 (300-1)		NA
LPV MDA	1760-1	410 (500-1)	1760-1¼ 410 (500-1¼)	NA
CIRCLING	1800-1 446 (500-1)	1820-1 466 (500-1)	1840-1½ 486 (500-1½)	NA



SC-1, 10 JUL 2025 to 07 AUG 2025

SC-1, 10 JUL 2025 to 07 AUG 2025