

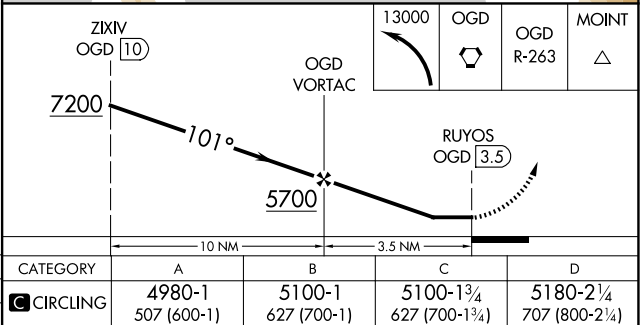
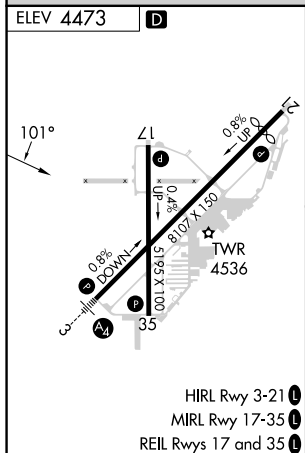
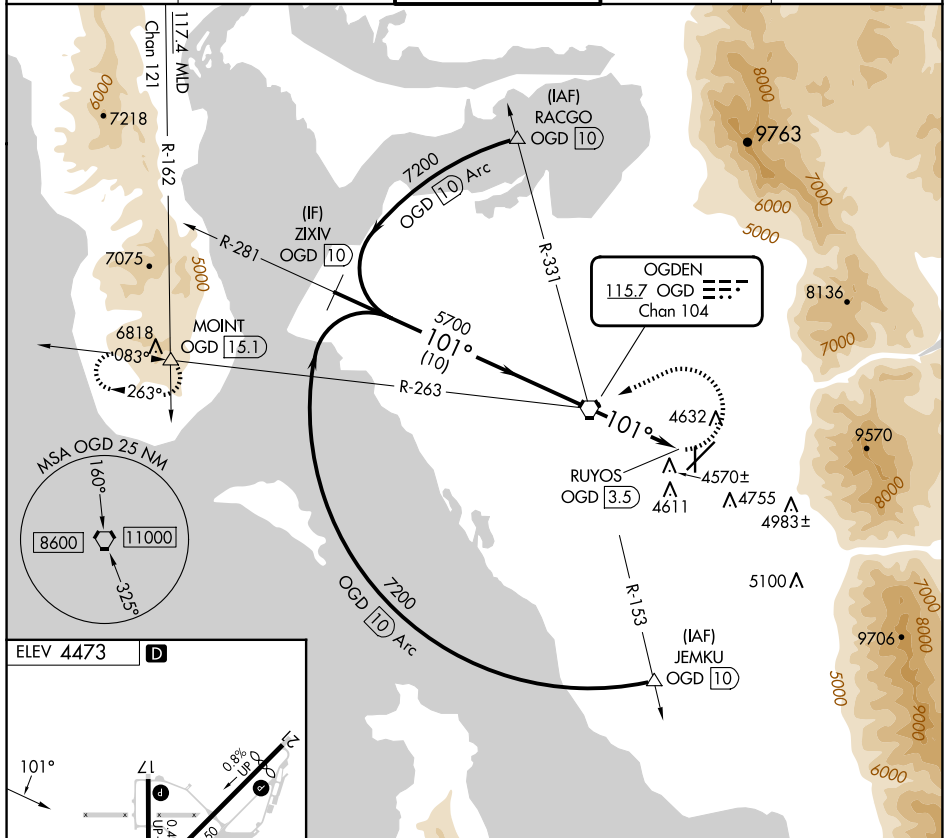
25163

VOR-A
OGDEN-HINCKLEY (OGD)

MISSED APPROACH: Climbing left turn to 13000 direct OGD VORTAC and on OGD VORTAC R-263 to MOINT/15.1 DME and hold, continue climb-in-hold.

T Circling NA for Cat C/D east of Rwy 21 and 35.

ATIS 125.55	SALT LAKE CITY APP CON 121.1	OGDEN TOWER★ 118.7 (CTAF) 0 253.5	GND CON 121.7	UNICOM 122.95
-----------------------	--	---	-------------------------	-------------------------



OGDEN, UTAH
Orig-A 12JUN25

OGDEN-HINCKLEY (OGD)
VOR-A

41°12'N-112°01'W

SW-4, 10 JUL 2025 to 07 AUG 2025