



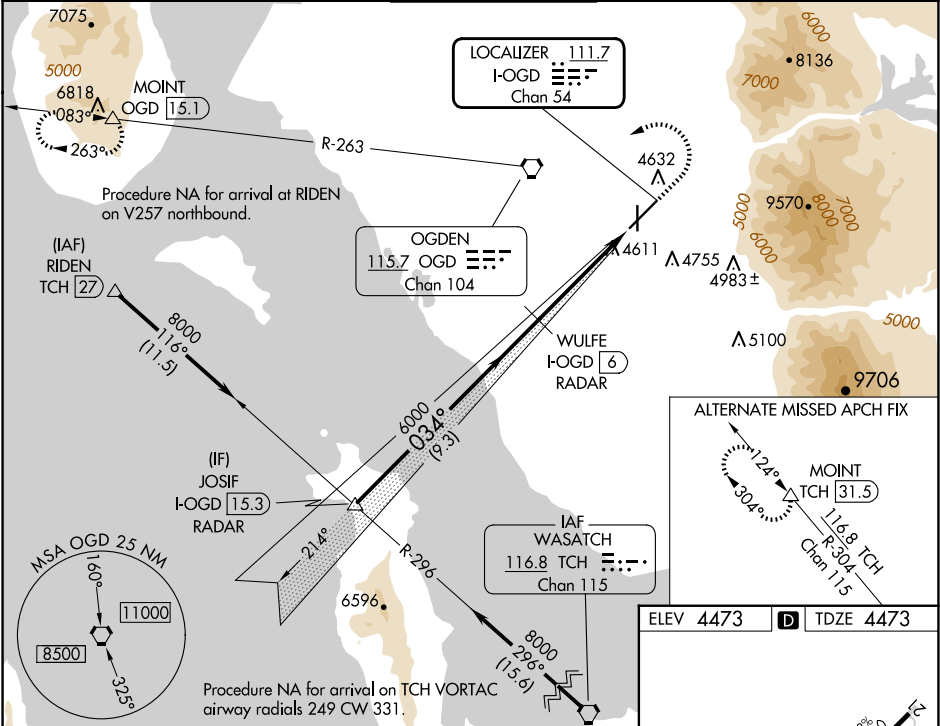


LOC/DME I-OGD 111.7 Chan 54	APP CRS 034°	Rwy Idg 7253 TDZE 4473 Apt Elev 4473
---	------------------------	---

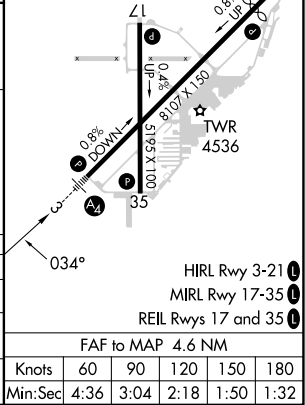
ILS or LOC RWY 3
OGDEN-HINCKLEY (OGD)

DME required. RADAR required for procedure entry.		<div>MALS</div> <div></div> <div></div>	MISSED APPROACH: Climb to 5000 then climbing left turn to 9000 direct OGD VORTAC and on OGD VORTAC R-263 to MOINT/OGD 15.1 DME and hold, continue climb-in-hold to 9000.
<div></div> <div></div>	Rwy 3 helicopter visibility reduction below ¾ SM NA. For inop ALS, increase S-ILS 3 all Cats visibility to ¾ SM. For inop ALS, increase S-LOC 3 Cat C/D visibility to 1 ½ SM. Circling NA for Cats C and D east of Rwy 21 and 35.		

ATIS 125.55	SALT LAKE CITY APP CON 121.1	OGDEN TOWER* 118.7 (CTAF) 0 253.5	GND CON 121.7	UNICOM 122.95
-----------------------	--	---	-------------------------	-------------------------



VGSI and ILS glidepath not coincident (VGSI Angle 3.00/TCH 56).				
JOSIF I-OGD 15.3 RADAR	WULFE I-OGD 6 RADAR	OGD R-263	OGD R-263	MOINT
8000	6000	*I-OGD 2.5	I-OGD 1.4	*LOC only
GS 3.00° TCH 49	9.3 NM	3.5 NM	1.1 NM	
CATEGORY	A	B	C	D
S-ILS 3	4740-¾ 267 (300-¾)			
S-LOC 3	4880-¾	407 (500-¾)	4880-1	407 (500-1)
CIRCLING	4980-1 507 (600-1)	5100-1 627 (700-1)	5100-1¾ 627 (700-1¾)	5180-2¾ 707 (800-2¾)



SW-4, 10 JUL 2025 to 07 AUG 2025

SW-4, 10 JUL 2025 to 07 AUG 2025