

ILS or LOC X RWY 14

LOC I-HIF <b>109.9</b>	APCH CRS <b>139°</b>	Rwy ldg <b>13,500</b> TDZE <b>4786</b> Arprt Elev <b>4789</b>
---------------------------	-------------------------	---

AL-296 [USAF]

HILL AFB (KHIF)

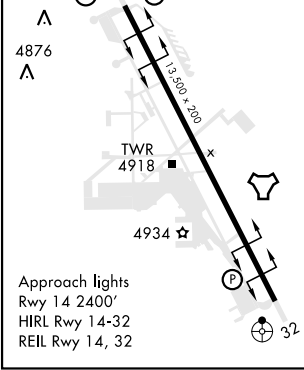
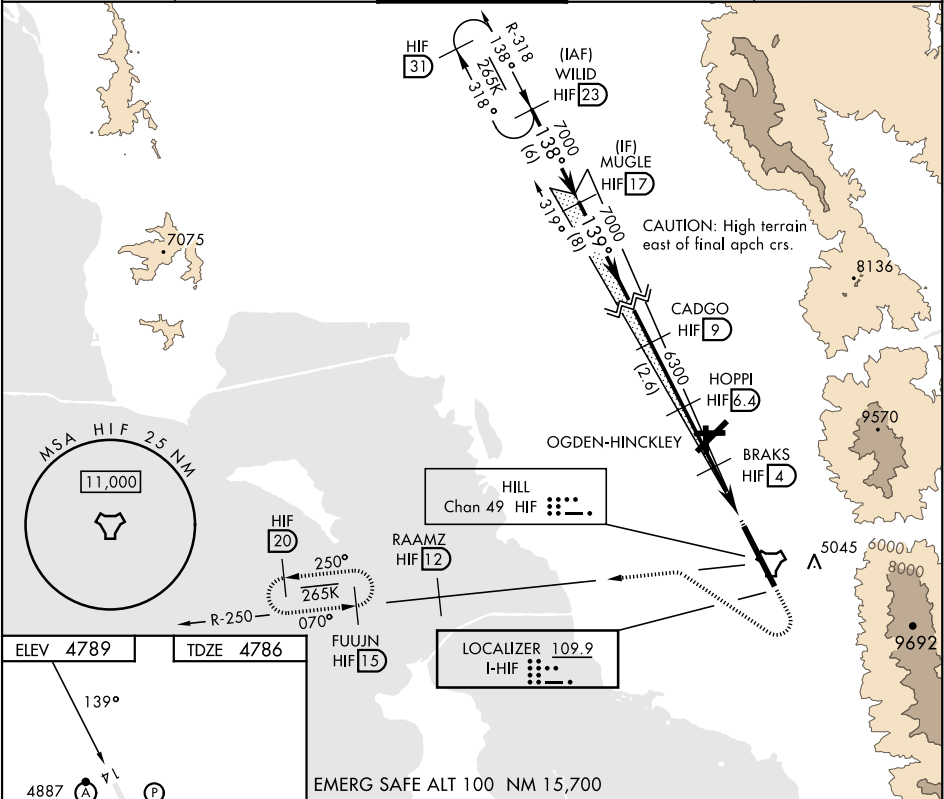
RADAR or DME required for LOC.

- ▼ \* When ALS inop, increase RVR to 40 and vis to ¾ mile.  
\*\* When ALS inop, increase RVR to 55 and vis to 1 mile.  
\*\*\* Circling not authorized in sector NE of Rwy 14-32.



MISSED APPROACH: Climb to 5300, then turn right heading 290°, remain within HIF TACAN 5.7 DME until established on 290° heading. Intercept the HIF R-250 outbound. Cross RAAMZ at 6500, then climb and maintain 7200 direct to FUJUN and hold.

ATIS <b>134.925 397.9</b>	SALT LAKE CITY APP CON <b>121.1 319.25</b>	TOWER <b>127.15 263.15</b>	GND CON <b>121.6 275.8</b>	CLNC DEL <b>124.1 335.8</b>
------------------------------	---	-------------------------------	-------------------------------	--------------------------------



EMERG SAFE ALT 100 NM 15,700				
<div>WILD HIF 23 8600 138°</div> <div>MUGLE Intcp Lcizr HIF 17 7000 139°</div> <div>CADGO HIF 9 6300</div> <div>HOPPI HIF 6.4 5700</div> <div>BRAKS HIF 4 5300</div> <div>DITLE HIF 2 5900</div> <div>RAAMZ HIF 12 6500</div>				
<div>GS 2.80° TCH 57</div> <div>4.3 NM 0.5 NM</div>				
CATEGORY	A	B	C	D
S-ILS 14 *		4986/24	200	(200-½)
S-LOC 14 **		5080/24	294	(300-½)
CIRCLING	5280-1 491 (500-1)	5280-1½ 491 (500-1½)	5340-2 551 (600-2)	5900-3 1111 (1200-3)

ILS or LOC X RWY 14

SW-4, 10 JUL 2025 to 07 AUG 2025

SW-4, 10 JUL 2025 to 07 AUG 2025