

OGDEN, UTAH

HI-ILS or LOC Y RWY 14

LOC I-HIF <b><u>109.9</u></b>	APCH CRS <b>139°</b>	Rwy Idg <b>13,500</b> TDZE <b>4786</b> Arpt Elev <b>4789</b>
----------------------------------	-------------------------	--

JAL-296 (USAF)

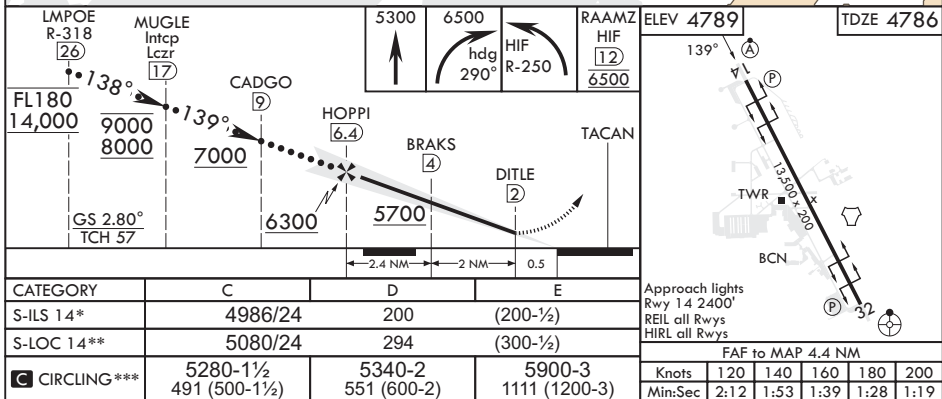
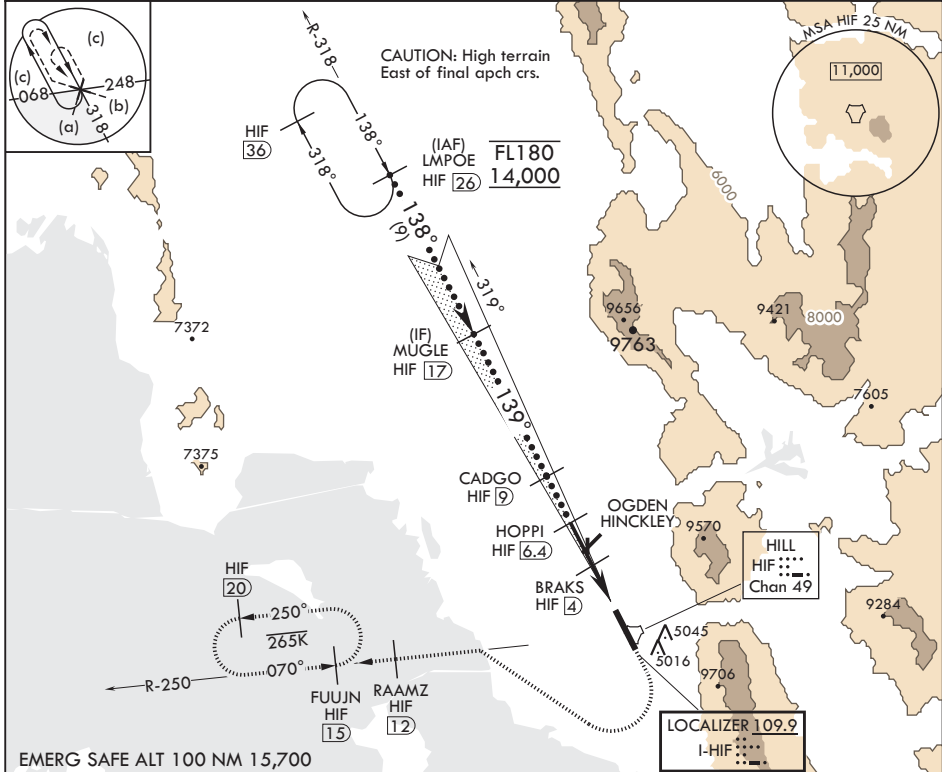
HILL AFB (KHIF)

**T** \* When ALS inop, increase RVR to 40, and vis to 3/4 mile.  
 \*\* When ALS inop, increase RVR to 55, and vis to 1 mile.  
 \*\*\* Circling not authorized NE of Rwy 14-32.

ALSF-2

**MISSED APPROACH:** Climb to 5300, then turn right heading 290°, remain within HIF TACAN 5.7 DME until established on 290° hdg. Intercept the HIF R-250 outbd. Cross RAAMZ at 6500, then climb and maintain 7200 direct to FUJIN and hold.

ATIS 134.925 397.9	SALT LAKE CITY APP CON 121.1 319.25	TOWER 127.15 263.15	GND CON 121.6 275.8	CLNC DEL 124.1 335.8
-----------------------	--	------------------------	------------------------	-------------------------



OGDEN, UTAH

41°07'N - 111°58'W

HILL AFB (KHIF)

Amdt 9 05OCT23

HI-ILS or LOC Y RWY 14

SW-4, 10 JUL 2025 to 07 AUG 2025

SW-4, 10 JUL 2025 to 07 AUG 2025