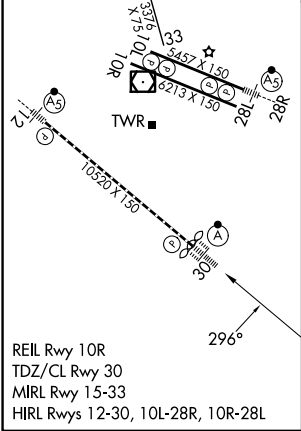
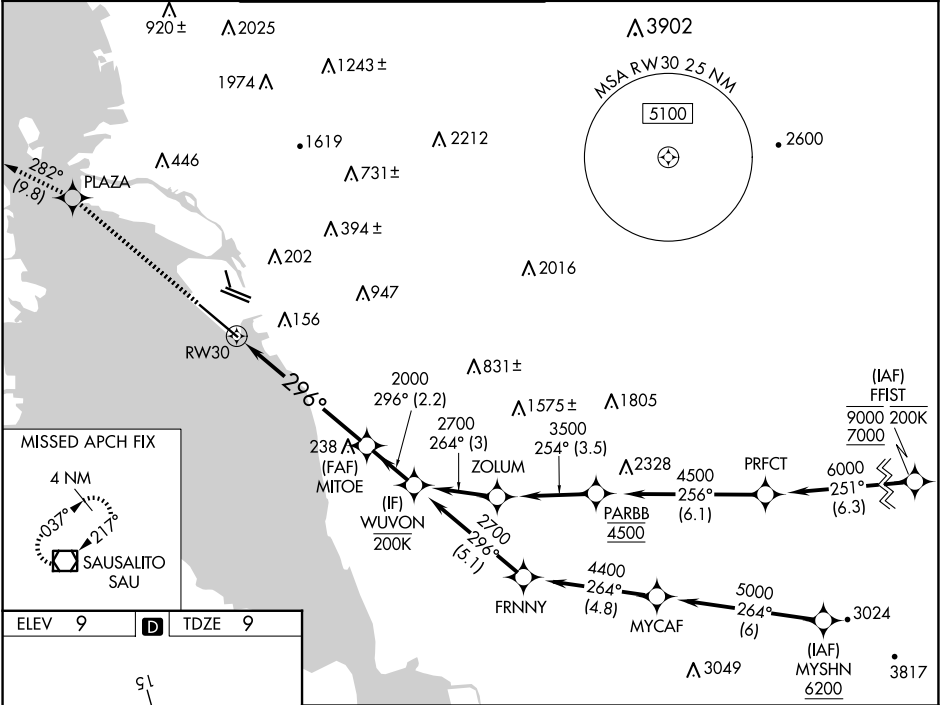


WAAS CH 93535 W30A	APP CRS 296°	Rwy Ldg 10000 TDZE 9 Apt Elev 9
--	------------------------	--

RNAV (GPS) Y RWY 30

OAKLAND INTL (OAK)

RNP APCH - GPS.			ALSIF-2		MISSED APPROACH: Climb to 4000 direct PLAZA and on track 282° to SAU VOR/DME and hold, continue climb-in-hold to 4000.	
<div>▼</div> <div>▲</div> For uncompensated Baro-VNAV systems, LNAV/VNAV NA below 2°C or above 54°C. For inop ALS, increase LNAV/VNAV Cats A/B/C visibility to RVR 4000, Cat D visibility to RVR 4500, and LNAV Cats C/D visibility to 1 3⁄8 SM.			<div>Ⓐ</div> <div>Ⓜ</div>			
D-ATIS 133.775	NORCAL APP CON 125.35 263.15	OAKLAND TOWER 118.3 291.65 (Rwys 10L/R-28L/R, 15-33) 127.2 256.9 (Rwy 12-30)	GND CON 121.9 (Rwys 10L/R-28L/R, 15-33) 121.75 (Rwy 12-30)		CLNC DEL 121.1	CPDLC



4000	PLAZA	tr 282°	SAU	VGSI and RNAV glidepath not coincident (VGSI Angle 3.00/TCH 71).	
				WUVON	
				MITOE	
				2000	
				2700	
				296°	
				2000	
				GP 3.00°	
				TCH 55	
				1.3 NM	
				4.8 NM	
				2.2 NM	
CATEGORY	A	B	C	D	
LPV DA	209/18 200 (200-1⁄2)				
LNAV/VNAV DA	259/24	250 (300-1⁄2)	265/24 256 (300-1⁄2)	283/24 274 (300-1⁄2)	
LNAV MDA	500/24	491 (500-1⁄2)	500/50	491 (500-1)	
CIRCLING	560-1	551 (600-1)	660-1 3⁄4 651 (700-1 3⁄4)	1400-3 1391 (1400-3)	