
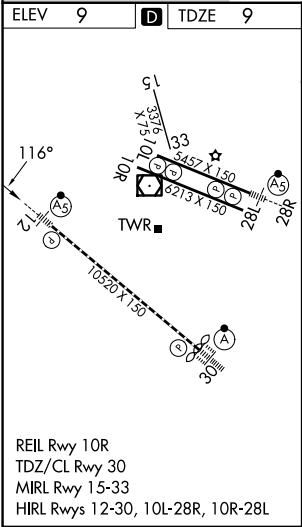
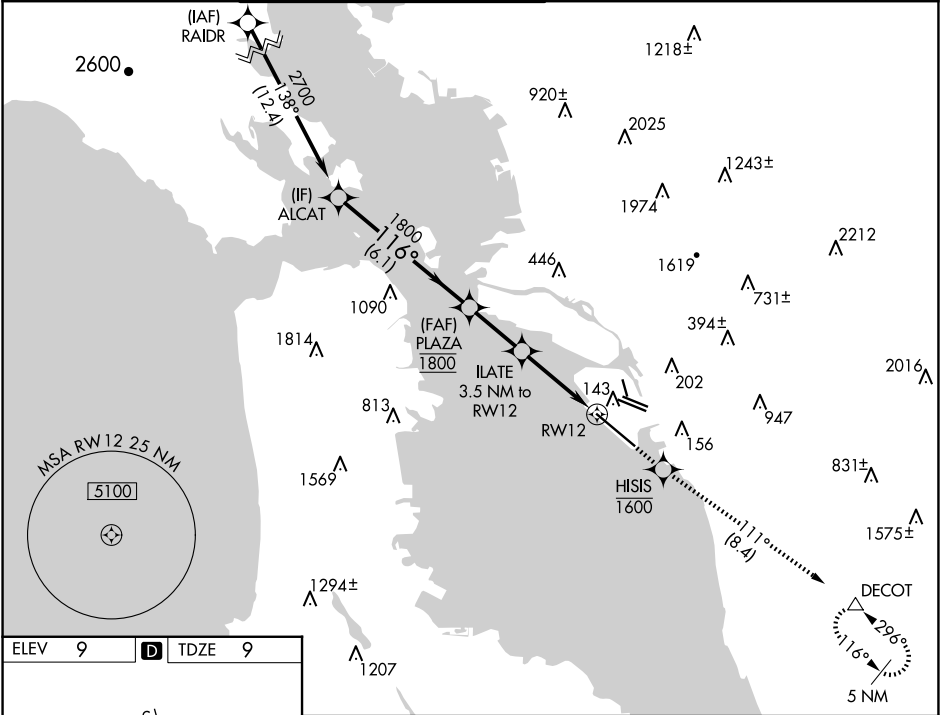


WAAS CH 86418 W12A	APP CRS 116°	Rwy Ldg 10000 TDZE 9 Apt Elev 9
--	------------------------	--

RNAV (GPS) Y RWY 12

OAKLAND INTL (OAK)

<div><div>▼</div><div>▲</div></div> <div>For uncompensated Baro-VNAV systems, LNAV/VNAV NA below 0°C (32°F) or above 54°C (130°F). DME/DME RNP-0.3 NA. #RVR 1800 authorized with use of FD or AP or HUD to DA.</div>			<div>MALSR</div> <div></div>		MISSED APPROACH: Climb direct HISIS to cross HISIS at or below 1600, then climb to 5400 on track 111° to DECOT and hold, continue climb-in-hold to 5400.		
D-ATIS 133.775	NORCAL APP CON 125.35 263.15	OAKLAND TOWER 118.3 291.65 (Rwys 10L/R-28L/R, 15-33) 127.2 256.9 (Rwy 12-30)		GND CON 121.9 (Rwys 10L/R-28L/R, 15-33) 121.75 (Rwy 12-30)		CLNC DEL 121.1	CPDLC



VGSI and RNAV glidepath not coincident (VGSI Angle 2.75/TCH 70).				<div><div>↑</div><div>HISIS</div><div>1600</div></div>		<div><div>↑</div><div>5400</div><div>tr 111°</div></div>		<div><div>△</div><div>DECOT</div></div>	
<div><div>ALCAT</div><div>2700</div><div>116°</div><div>1800</div><div>GP 2.75° TCH 55</div></div>				<div><div>PLAZA</div><div>1800</div><div>ILATE</div><div>3.5 NM to RW12</div><div>*1 NM to RW12</div><div>RW12</div><div>*LNAV only.</div></div>		<div><div>*1080</div></div>			
<div><div>6.1 NM</div><div>2.5 NM</div><div>2.5 NM</div><div>1 NM</div></div>									
CATEGORY		A		B		C		D	
LPV DA#		209/24 200 (200-½)							
LNAV/ VNAV DA		304/27 295 (300-⅝)							
LNAV MDA		360/24 351 (400-½)				360/30 351 (400-⅝)			
<div><div>■</div></div> CIRCLING		560-1 551 (600-1)				660-1¾ 651 (700-1¾)		1380-3 1371 (1400-3)	