

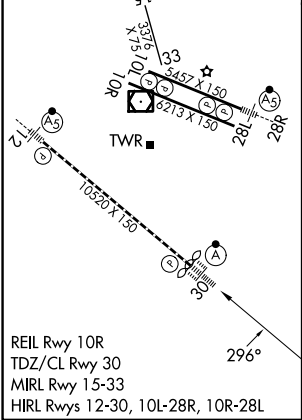
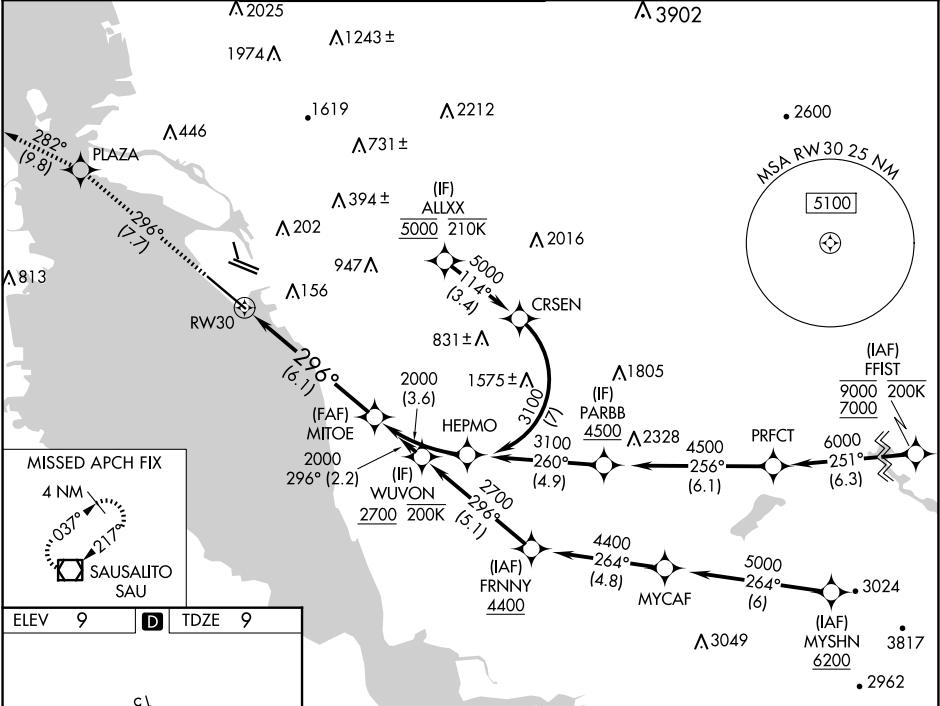




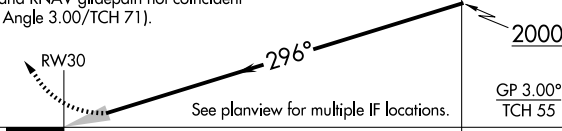
APP CRS	Rwy Ldg	10000
296°	TDZE	9
	Apt Elev	9

RNAV (RNP) Z RWY 30

OAKLAND INTL (OAK)

RNP AR APCH - GPS. Authorization required. From ALLXX or PARBB: RF.			ALSF-2 	MISSED APPROACH: Climb to 4000 on track 296° to PLAZA and on track 282° to SAU VOR/DME and hold, continue climb-in-hold to 4000.	
RADAR required.					
 For uncompensated Baro-VNAV systems, procedure NA below 2°C or above 54°C. For inop ALS, increase RNP 0.15 all Cats visibility to RVR 4500 and increase RNP 0.30 all Cats visibility to RVR 5500.					
D-ATIS 133.775	NORCAL APP CON 125.35 263.15	OAKLAND TOWER 118.3 291.65 (Rwys 10L/R-28L/R, 15-33) 127.2 256.9 (Rwy 12-30)	GND CON 121.9 (Rwys 10L/R-28L/R, 15-33) 121.75 (Rwy 12-30)	CLNC DEL 121.1	CPDLC



4000 ↑ tr 296°	PLAZA 	tr 282° 	SAU	MITOE 2000
VGSI and RNAV glidepath not coincident (VGSI Angle 3.00/TCH 71).				
				
CATEGORY	A	B	C	D
RNP 0.15 DA	281/24 272 (300-½)			
RNP 0.30 DA	385/35 376 (400-⅝)			
AUTHORIZATION REQUIRED				