

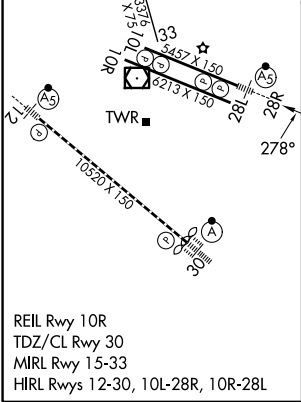
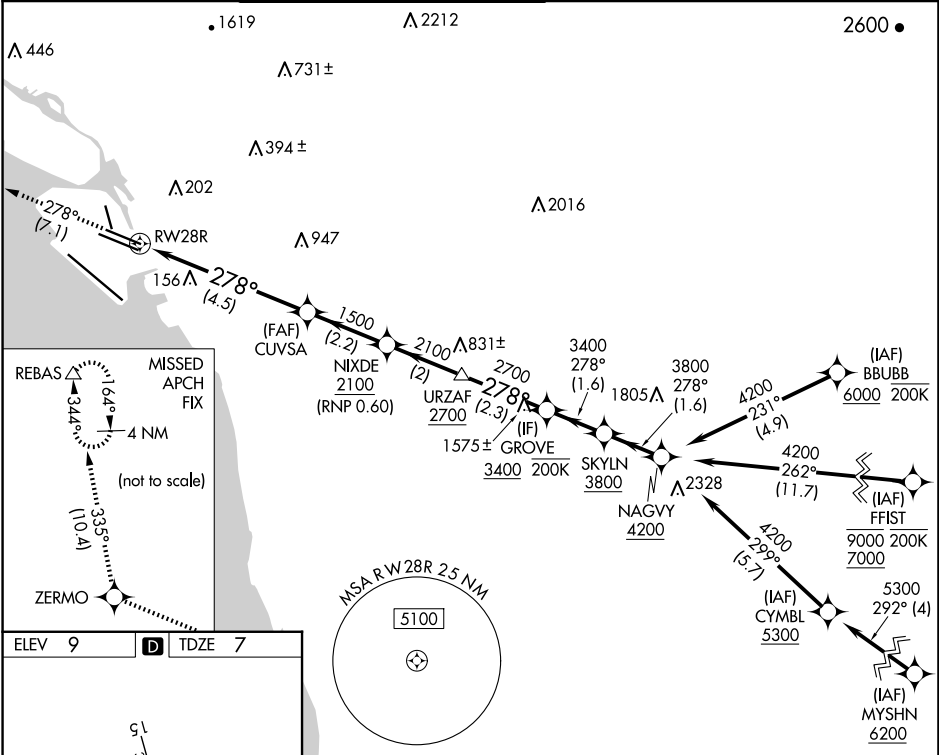
APP CRS	Rwy Ldg	5457
278°	TDZE	7
	Apt Elev	9

RNAV (RNP) Z RWY 28R

OAKLAND INTL (OAK)

RNP AR APCH - GPS. Authorization required.		MALSR	MISSED APPROACH: Climb to 3000 on 278° track to ZERMO and on 335° track to REBAS and hold.
For uncompensated Baro-VNAV systems, procedure NA below 2°C or above 54°C. For inop ALS, increase RNP 0.30 all Cats visibility to RVR 6000.			

D-ATIS	NORCAL APP CON	OAKLAND TOWER	GND CON	CLNC DEL	CPDLC
133.775	125.35 263.15	118.3 291.65 (Rwys 10L/R-28L/R, 15-33) 127.2 256.9 (Rwy 12-30)	121.9 (Rwys 10L/R-28L/R, 15-33) 121.75 (Rwy 12-30)	121.1	



3000 ↑ tr 278°	ZERMO ✦ tr 335°	REBAS △				
			URZAF	GROVE	SKYLN	NAGVY
						4200
						278°
			CUVSA	NIXDE		
			1500	2100	3400	3800
				2700		
RW28R			1500			
			4.5 NM	2.2 NM	2 NM	2.3 NM
					1.6 NM	1.6 NM
CATEGORY	A		B		C	D
RNP 0.10 DA	332/26 325 (400-½)					
RNP 0.30 DA	418/40 411 (500-¾)					
AUTHORIZATION REQUIRED						

SW-2, 10 JUL 2025 to 07 AUG 2025

SW-2, 10 JUL 2025 to 07 AUG 2025