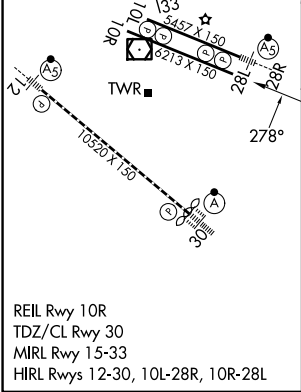
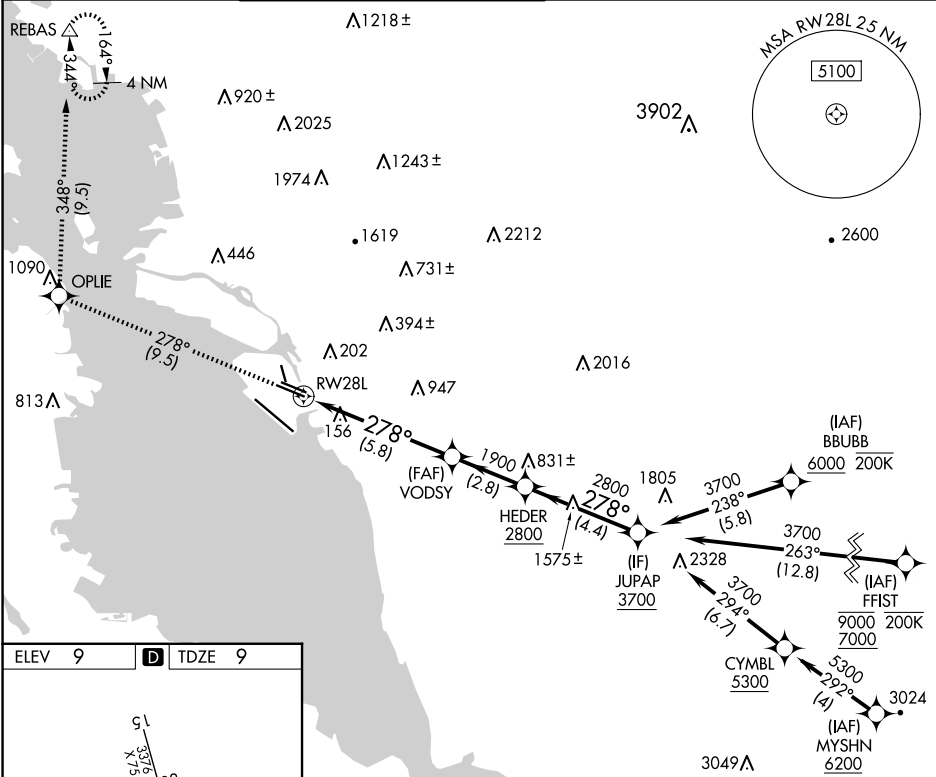



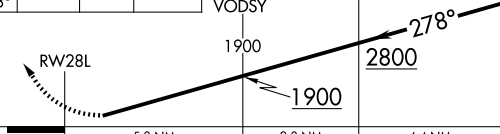


APP CRS	Rwy Ldg	6213
278°	TDZE	9
	Apt Elev	9

RNAV (RNP) Z RWY 28L
OAKLAND INTL (OAK)

RNP AR APCH - GPS. Authorization required.			MISSED APPROACH: Climb to 3000 on track 278° to OPLIE and on track 348° to REBAS and hold.		
▼ For uncompensated Baro-VNAV systems, procedure NA below 2°C or above 54°C.					
D-ATIS 133.775	NORCAL APP CON 125.35 263.15	OAKLAND TOWER 118.3 291.65 (Rwys 10L/R-28L/R, 15-33) 127.2 256.9 (Rwy 12-30)	GND CON 121.9 (Rwys 10L/R-28L/R, 15-33) 121.75 (Rwy 12-30)	CLNC DEL 121.1	CPDLC



3000	OPLIE	REBAS	VGSI and RNAV glidepath not coincident (VGSI Angle 3.00°/TCH 50).		JUPAP
 tr 278°	 tr 348°		VODSY	HEDER	
			1900	278°	3700
			<u>1900</u>	<u>2800</u>	<u>3700</u>
			5.8 NM	2.8 NM	4.4 NM
CATEGORY	A	B	C	D	
RNP 0.10 DA	306/45 297 (300-%)				
RNP 0.15 DA	359/55 350 (400-1)				
RNP 0.30 DA	425/60 416 (500-1¼)				
AUTHORIZATION REQUIRED					