
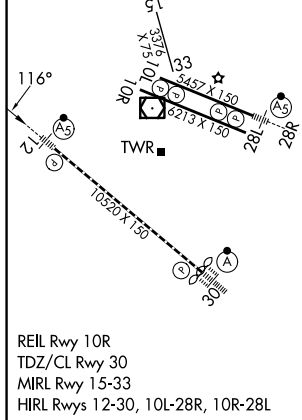
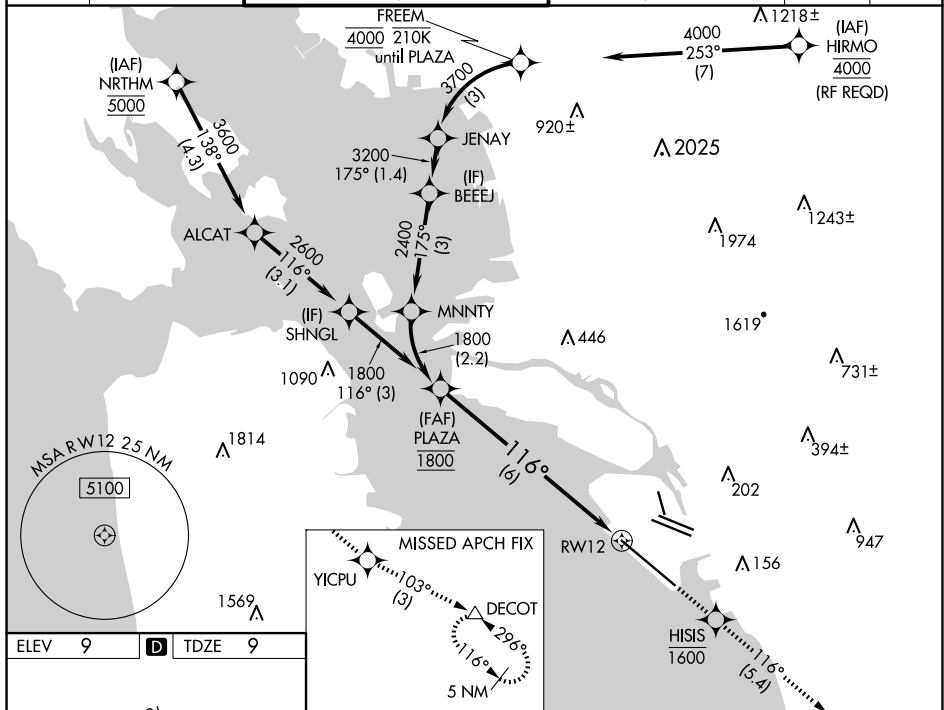


APP CRS 116°	Rwy Ldg 10000 TDZE 9 Apt Elev 9
------------------------	--

RNAV (RNP) Z RWY 12
OAKLAND INTL (OAK)

RNP AR APCH.			MALSR 		MISSED APPROACH: Climb direct HISIS to cross HISIS at or below 1600 then climb to 5400 on track 116° to YICPU and on track 103° to DECOT and hold, continue climb-in-hold to 5400.		
T For uncompensated Baro-VNAV systems, procedure NA below 0°C or above 54°C. For inop ALS increase RNP 0.15 visibility all Cats to RVR 4500, RNP 0.30 visibility all Cats to RVR 5500.							
D-ATIS	NORCAL APP CON	OAKLAND TOWER		GND CON		CLNC DEL	CPDLC
133.775	125.35 263.15	118.3 291.65 (Rwys 10L/R-28L/R, 15-33) 127.2 256.9 (Rwy 12-30)		121.9 (Rwys 10L/R-28L/R, 15-33) 121.75 (Rwy 12-30)		121.1	



See planview for multiple IF locations.

PLAZA
1800

1800

GP 2.75°
TCH 55

116°

6 NM

RW12

VGS1 and RNAV glidepath not coincident
(VGS1 Angle 2.75°/TCH 70).

CATEGORY	A	B	C	D
RNP 0.15 DA	289/24	280 (300-½)		
RNP 0.30 DA	386/35	377 (400-⅔)		

AUTHORIZATION REQUIRED