
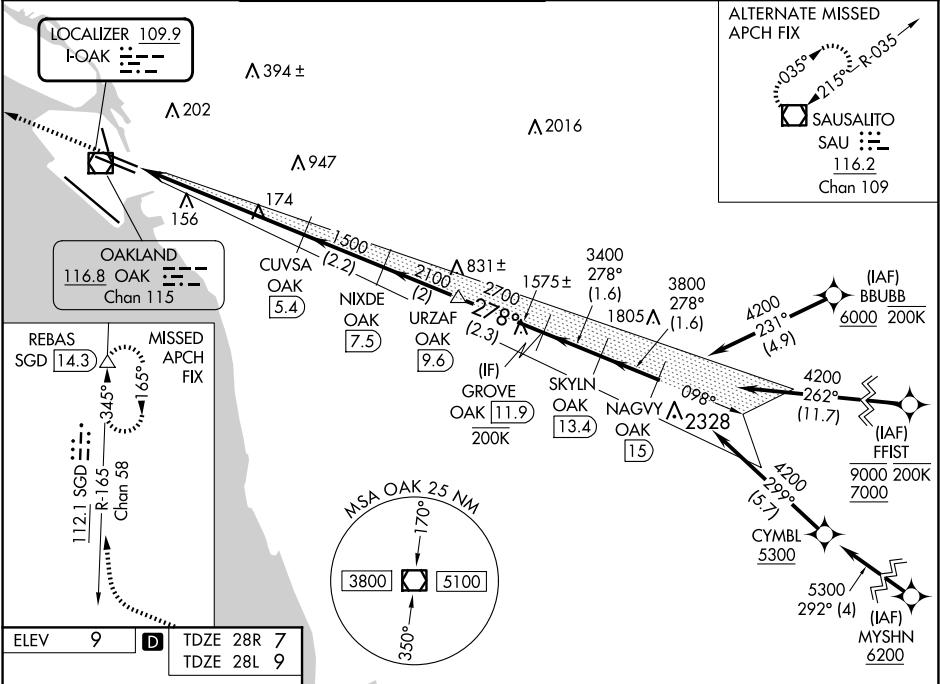


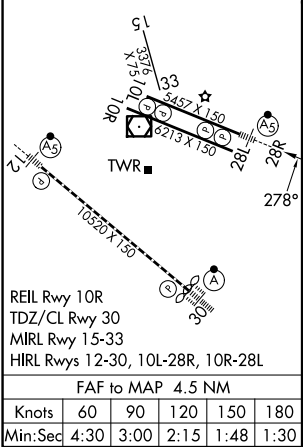
LOC I-OAK	APP CRS	Rwy Ldg	28R	28L
109.9	278°	TDZE	5457	6213
		Apt Elev	7	9

ILS or LOC RWY 28R
OAKLAND INTL (OAK)

RNP APCH - GPS. From BBUBB or FFIST or MYSHN.			<div>MALSR Rwy 28R</div> <div></div>	MISSED APPROACH: Climb to 1900 then climbing right turn to 3000 on heading 340° and SGD VORTAC R-165 to REBAS/SGD 14.3 DME and hold.			
DME required.							
<div><div><div><div></div><div></div></div><div><div></div><div></div></div></div><div>DME from OAK VOR/DME. Simultaneous reception of I-OAK and OAK DME required.</div><div>*RVR 1800 authorized with use of FD or AP or HUD to DA.</div></div>							
D-ATIS	NORCAL APP CON	OAKLAND TOWER		GND CON		CLNC DEL	CPDLC
133.775	125.35 263.15	118.3 291.65 (Rwys 10L/R-28L/R, 15-33) 127.2 256.9 (Rwy 12-30)		121.9 (Rwys 10L/R-28L/R, 15-33) 121.75 (Rwy 12-30)		121.1	



ELEV	9	D	TDZE 28R	7
			TDZE 28L	9



1900	3000	SGD R-165	REBAS	
		hdg 340°		
OAK	CUVSA	NIXDE	URZAF	GROVE
OAK [0.9]	OAK [5.4]	OAK [7.5]	OAK [9.6]	OAK [11.9]
	1500	2100	2700	3400
	4.5 NM	2.2 NM	2 NM	2.3 NM
			1.6 NM	1.6 NM
CATEGORY	A	B	C	D
S-ILS 28R*	207/24 200 (200-1/2)			
S-LOC 28R	440/24	433 (500-1/2)	440/40	433 (500-3/4)
SIDESTEP 28L	440-1	431 (500-1)	440-1 1/2	440-2
			431 (500-1 1/2)	431 (500-2)
CIRCLING	560-1	551 (600-1)	660-1 3/4	1400-3
			651 (700-1 3/4)	1391 (1400-3)