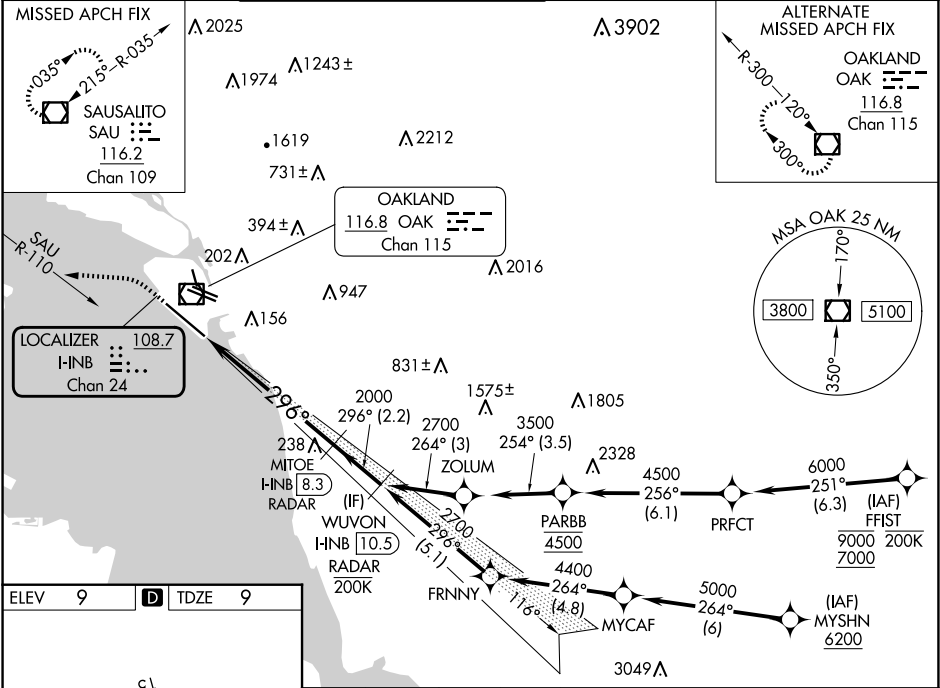


LOC/DME I-INB 108.7 Chan 24	APP CRS 296°	Rwy Ldg TDZE Apt Elev 10000 9 9
---	------------------------	---

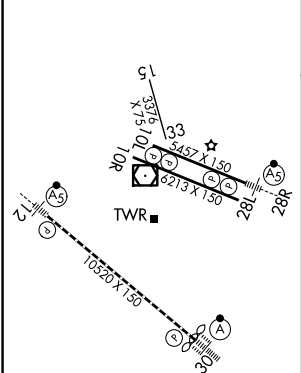
ILS RWY 30 (CAT II & III)
OAKLAND INTL (OAK)

RNP APCH - GPS. From FFI1 or MYSHN. DME or RADAR required.	ALSF-2 	MISSED APPROACH: Climb to 600 then climbing left turn to 4000 on heading 260° and on SAU VOR/DME R-110 to SAU VOR/DME and hold, continue climb-in-hold to 4000.
---	------------	---

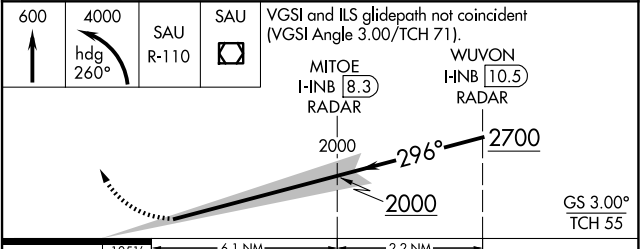
D-ATIS 133.775	NORCAL APP CON 125.35 263.15	OAKLAND TOWER 118.3 291.65 (Rwys 10L/R-28L/R, 15-33) 127.2 256.9 (Rwy 12-30)	GND CON 121.9 (Rwys 10L/R-28L/R, 15-33) 121.75 (Rwy 12-30)	CLNC DEL 121.1	CPDLC
--------------------------	--	--	--	--------------------------	-------



ELEV 9	D	TDZE 9
---------------	----------	---------------



REIL Rwy 10R
TDZ/CL Rwy 30
MIRL Rwy 15-33
HIRL Rwys 12-30, 10L-28R, 10R-28L



CATEGORY	A	B	C	D
S-ILS 30	CAT II RA 100/12 100 DA 109			
S-ILS 30	CAT III RVR 06			

CATEGORY II & III ILS - SPECIAL AIRCREW
& AIRCRAFT CERTIFICATION REQUIRED