

EMZOH FOUR ARRIVAL (RNAV)

AL-294 (FAA)

OAKLAND, CALIFORNIA

RNAV 1 - DME/DME/IRU or GPS.

RADAR required.

OAKLAND CENTER

133.7 285.4

NORCAL APP CON

124.525 348.675

HWD ATIS

126.7

OAK D-ATIS

33.775

OAKLAND TOWER

118.3 291.65 (Rwys 28L/R)

127.2 256.9 (Rwy 12-30)

HAYWARD TOWER★

120.2 257.8

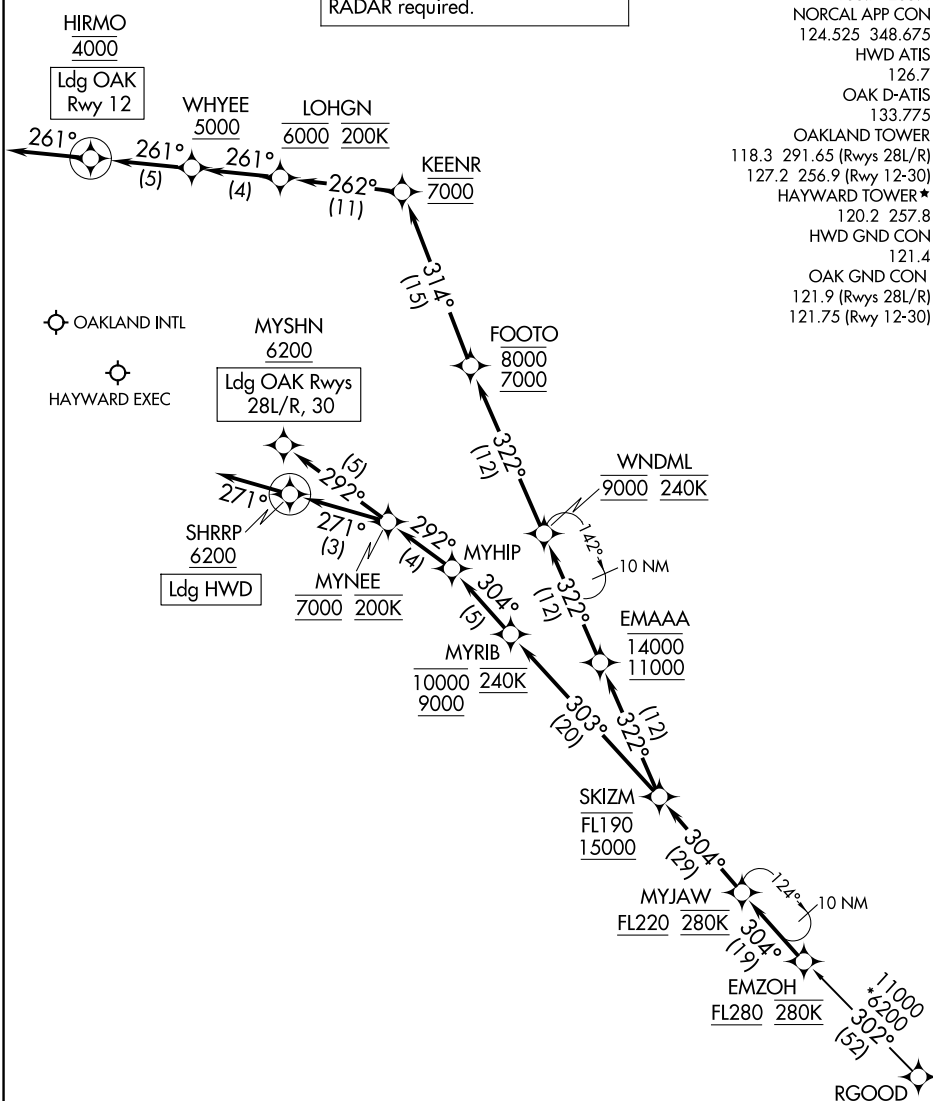
HWD GND CON

121.4

OAK GND CON

121.9 (Rwys 28L/R)

121.75 (Rwy 12-30)



NOTE: Expect to receive "descend via" clearance from Oakland Center.
Northern California TRACON will assign landing runway.

(CONTINUED ON FOLLOWING PAGE)

NOTE: Chart not to scale.

EMZOH FOUR ARRIVAL (RNAV)

OAKLAND, CALIFORNIA

(EMZOH.EMZOH4) 12JUN25

SW-2, 10 JUL 2025 to 07 AUG 2025