

25163

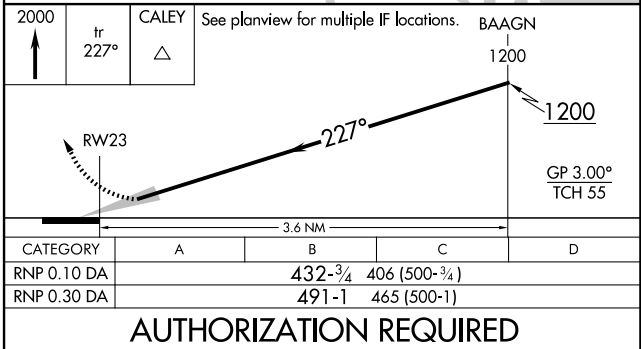
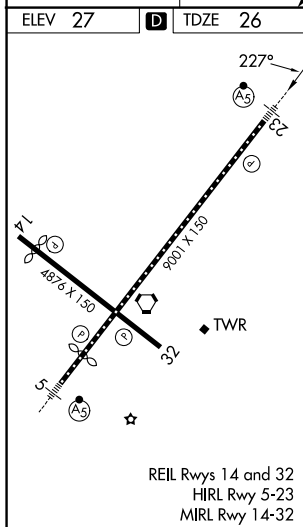
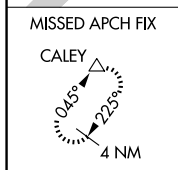
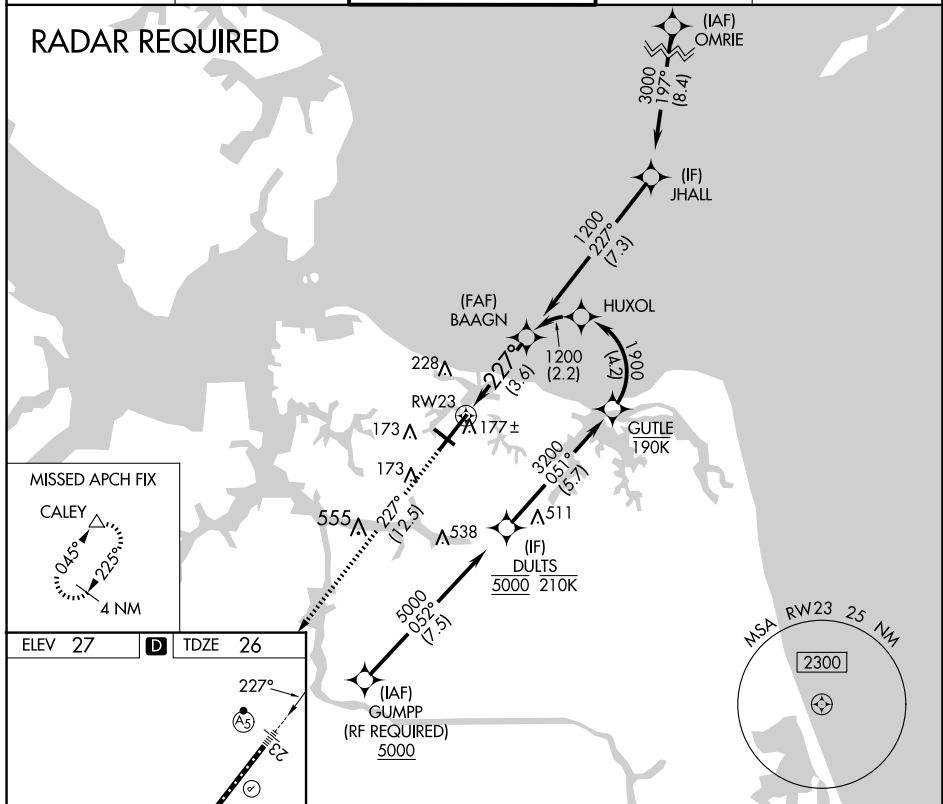
RNAV (RNP) Y RWY 23  
NORFOLK INTL (ORF)

MALSR

**MISSED APPROACH:** Climb to 2000 on track 227° to CALEY and hold.

ATIS 127.15	NORFOLK APP CON 118.9 353.7	NORFOLK TOWER 120.8 257.8	GND CON 121.9	CLNC DEL 118.5
----------------	--------------------------------	------------------------------	------------------	-------------------

## RADAR REQUIRED



NORFOLK INTL (ORF)  
RNAV (RNP) Y RWY 23

NE-3, 10 JUL 2025 to 07 AUG 2025