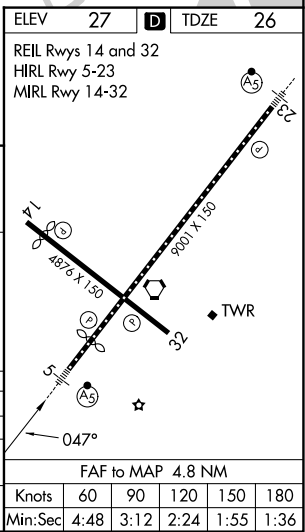
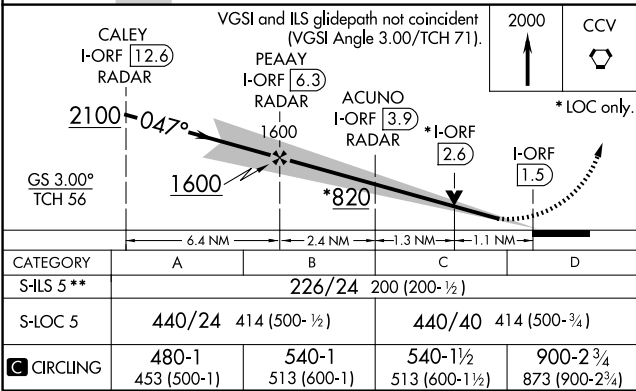
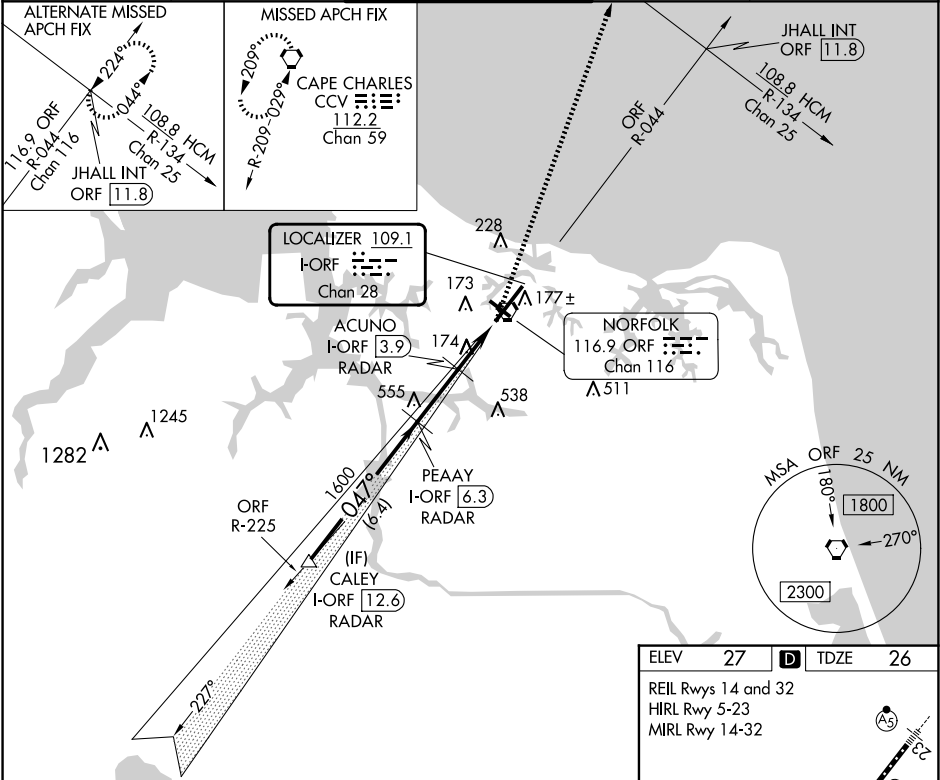


LOC/DME I-ORF <b>109.1</b> Chan <b>28</b>	APP CRS <b>047°</b>	Rwy Ldg <b>7809</b> TDZE <b>26</b> Apt Elev <b>27</b>
---	------------------------	---

ILS or LOC RWY 5  
NORFOLK INTL (ORF)

DME or RADAR required. RADAR required for procedure entry.		MALSR	MISSED APPROACH: Climb to 2000 direct CCV VORTAC and hold.
Autopilot coupled approach NA below 1180. For inop ALS, increase S-LOC 5 Cat C and D visibility to RVR 6000. ** RVR 1800 authorized with use of FD or AP or HUD to DA.			

ATIS <b>127.15</b>	NORFOLK APP CON <b>118.9 353.7</b>	NORFOLK TOWER <b>120.8 257.8</b>	GND CON <b>121.9</b>	CLNC DEL <b>118.5</b>
-----------------------	---------------------------------------	-------------------------------------	-------------------------	--------------------------



NE-3, 10 JUL 2025 to 07 AUG 2025

NE-3, 10 JUL 2025 to 07 AUG 2025