

TACAN Z RWY 10

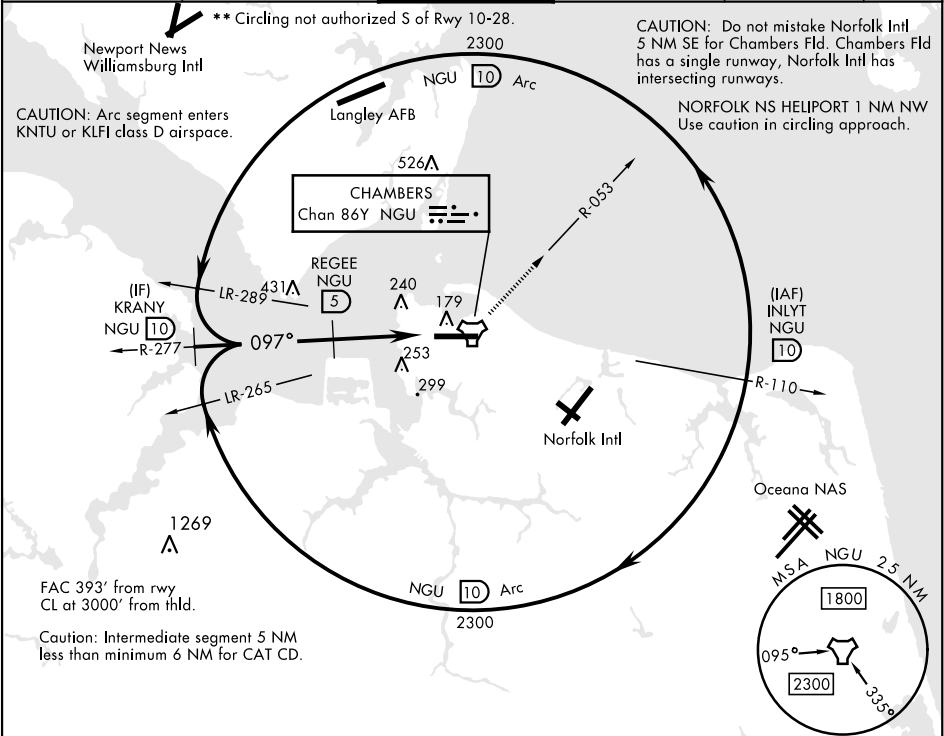
TACAN NGU Chan <b>86Y</b>	APCH CRS <b>097°</b>	Rwy Idg <b>8071</b> TDZE <b>14</b> Arpt Elev <b>15</b>
------------------------------	-------------------------	--

[USN]

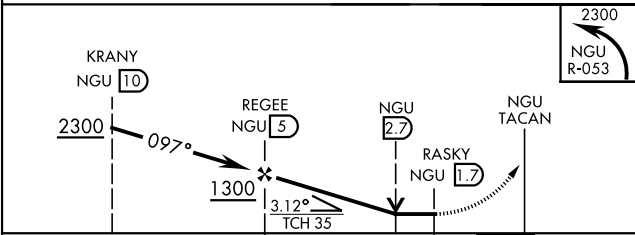
NORFOLK NS (CHAMBERS FLD) (KNGU)

RADAR required	ALSF-2	MISSED APPROACH: Climbing left turn to 2300 on NGU TACAN R-053 then as directed by ATC.
▼ * When ALS inop, increase CAT AB vis to 1 mile, CAT CD vis to 1½ miles.		

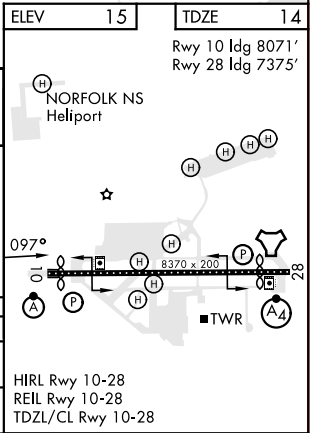
ATIS <b>118.425 338.225</b>	APP CON <b>118.9 273.475</b>	CHAMBERS TOWER <b>124.3 379.15</b>	GND CON <b>121.8 370.85</b>	CLNC DEL <b>120.7 339.8</b>	ASR/PAR
--------------------------------	---------------------------------	---------------------------------------	--------------------------------	--------------------------------	---------



EMERG SAFE ALT 100 NM 4100



CATEGORY	A	B	C	D
S-10*	520-½ 506 (600-½)	520-1 506 (600-1)	520-1 506 (600-1)	520-1 506 (600-1)
CIRCLING**	520-1 505 (600-1)	540-1 525 (600-1)	540-1½ 525 (600-½)	580-2 565 (600-2)



NORFOLK, VIRGINIA

36° 56' N-76° 17' W

NORFOLK NS (CHAMBERS FLD) (KNGU)

Orig 26JAN23

TACAN Z RWY 10

NE-3, 10 JUL 2025 to 07 AUG 2025

NE-3, 10 JUL 2025 to 07 AUG 2025