

RNAV (GPS) RWY 10

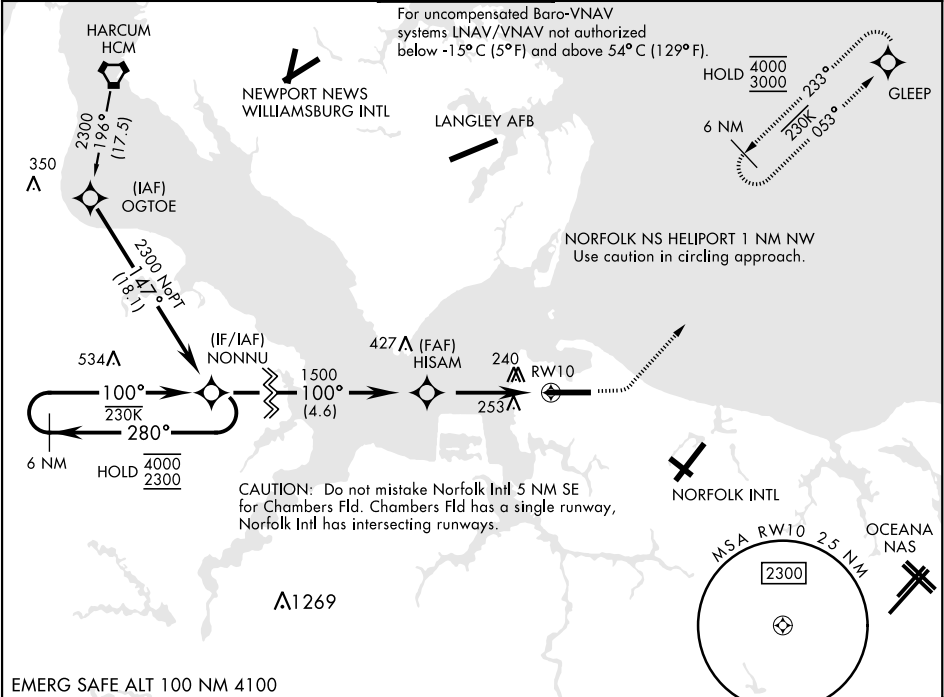
WAAS	APCH CRS	Rwy Idg
Chan 44826	100°	8071
W10A		TDZE 14
		Arpt Elev 15

[USN]

NORFOLK NS (CHAMBERS FLD) (KNGU)

RNP APCH	ALSF-2	MISSED APPROACH: Climb to 800 then climbing left turn to 3000 direct GLEEP and hold.
▼ *When ALS inop, increase vis to ¾ mile. ** When ALS inop, increase vis to 1½ miles. *** When ALS inop, increase CAT AB vis to 1 mile, CAT CDE vis to 1½ miles. **** Circling not authorized S of Rwy 10-28.		

ATIS 118.425 338.225	APP CON 118.9 273.475	CHAMBERS TOWER 124.3 379.15	GND CON 121.8 370.85	CLNC DEL 120.7 339.8	ASR/PAR
--------------------------------	---------------------------------	---------------------------------------	--------------------------------	--------------------------------	---------



EMERG SAFE ALT 100 NM 4100

VGSI and RNAV glidepath not coincident (VGSI Angle 3.00/TCH 35).					800	3000	GLEEP	
6 NM Holding Pattern								
GP 3.00° TCH 50								
CATEGORY	A	B	C	D	E	ELEV 15		TDZE 14
LPV DA *	214-½		200	(200-½)		Rwy 10 Idg 8071' Rwy 28 Idg 7375'		
LNAV/ VNAV DA **	520-1		506	(600-1)				
LNAV MDA ***	520-½ 506 (600-½)		520-1	506	(600-1)		HRL Rwy 10-28 REIL Rwy 10-28 TDZL/CL Rwy 10-28	
CIRCLING ****	520-1 505 (600-1)	540-1 525 (600-1)	540-1½ 525 (600-1½)	580-2	565	(600-2)		

RNAV (GPS) RWY 10

NE-3, 10 JUL 2025 to 07 AUG 2025

NE-3, 10 JUL 2025 to 07 AUG 2025