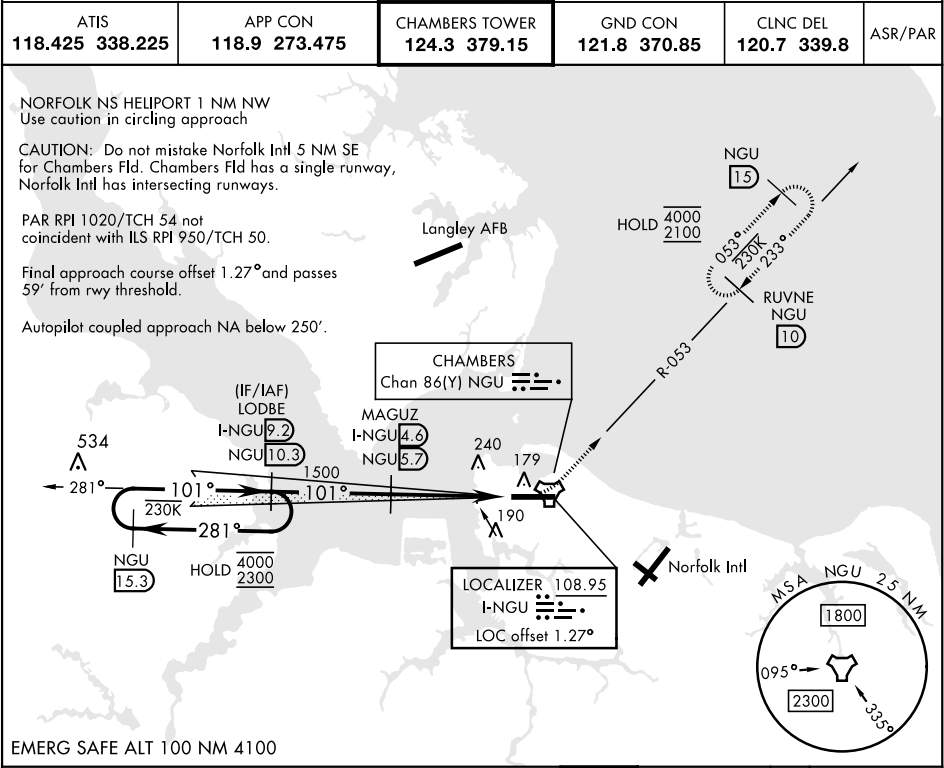


NORFOLK, VIRGINIA

ILS or LOC/DME RWY 10

LOC I-NGU <b>108.95</b>	APCH CRS <b>101°</b>	Rwy ldg TDZE Arpt Elev <b>8071</b> <b>14</b> <b>15</b>	[USN]	NORFOLK NS (CHAMBERS FLD) (KNGU)
TACAN required			ALSIF-2	MISSED APPROACH: Climbing left turn to 2100 via NGU TACAN R-053 to RUVNE and hold.

ATIS <b>118.425 338.225</b>	APP CON <b>118.9 273.475</b>	CHAMBERS TOWER <b>124.3 379.15</b>	GND CON <b>121.8 370.85</b>	CLNC DEL <b>120.7 339.8</b>	ASR/PAR
--------------------------------	---------------------------------	---------------------------------------	--------------------------------	--------------------------------	---------



EMERG SAFE ALT 100 NM 4100					VGSi and ILS glidepath not coincident (VGSi Angle 3.00/TCH 35).		ELEV 15	TDZE 14
					Rwy 10 ldg 8071' Rwy 28 ldg 7375'		NORFOLK NS Heliport	
CATEGORY					A		B	
S-ILS 10 *					264-1/2		250	
S-LOC 10 **					440-1/2		426 (500-1/2)	
*** CIRCLING					480-1 465 (500-1)		540-1 525 (600-1)	
					540-1 525 (600-1 1/2)		580-2 565 (600-2)	
					HIRL Rwy 10-28		REIL Rwy 10-28	
					TDZL/CL Rwy 10-28			

NORFOLK, VIRGINIA 36°56'N-76°17'W NORFOLK NS (CHAMBERS FLD) (KNGU)

Amtd 2 22FEB24

ILS or LOC/DME RWY 10

NE-3, 10 JUL 2025 to 07 AUG 2025

NE-3, 10 JUL 2025 to 07 AUG 2025