

HI-TACAN Y RWY 28

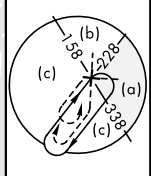
TACAN NGU Chan 86Y	APCH CRS 290°	Rwy ldg TDZE Arpt Elev 7375 14 15	[USN]	NORFOLK NS (CHAMBERS FLD) (KNGU)
RADAR required			SSALF	MISSED APPROACH: Climb to 2300 on NGU TACAN R-277 then as directed by ATC.
* When ALS inop, increase CAT CDE vis to 1 3/8 miles. ** Circling not authorized S of Rwy 10-28.			A4	
ATIS 118.425 338.225	APP CON 118.9 273.475	CHAMBERS TOWER 124.3 379.15	GND CON 121.8 370.85	ASR/PAR

CAUTION:
Do not mistake Norfolk Intl 5 NM SE for Chambers Fld. Chambers Fld has a single rwy, Norfolk Intl has int runways.

NORFOLK NS HELIPORT 1 NM NW
Use caution in circling approach.

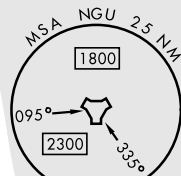
FAC 464 ft from rwy CL
at 3000 ft from thld.

A 758



ORF Feeder requires
procedure turn.

CAUTION: Arc segment
enters KNTU class D airspace.



EMERG SAFE ALT 100 NM 4100

2300 NGU R-277	NGU TACAN	KLUMM NGU 0.5	NGU 1.3	IDOGU NGU 3	JODIR NGU 4	INLYT NGU 10	RUSIE NGU 10	PADGE NGU 22	DRONE NGU 31
0.5 NM	2.5 NM	1 NM							
CATEGORY	C	D	E						
S-28 *	460-1	446	(500-1)						
CIRCLING **	540-1 1/2 525 (600-1 1/2)	580-2	565 (600-2)						

ELEV 15	TDZE 14
Rwy 10 ldg 8071' Rwy 28 ldg 7375'	
NORFOLK NS Heliport	
HIRL Rwy 10-28 REIL Rwy 10-28 TDZL/CL Rwy 10-28	