

HI-TACAN Y RWY 10

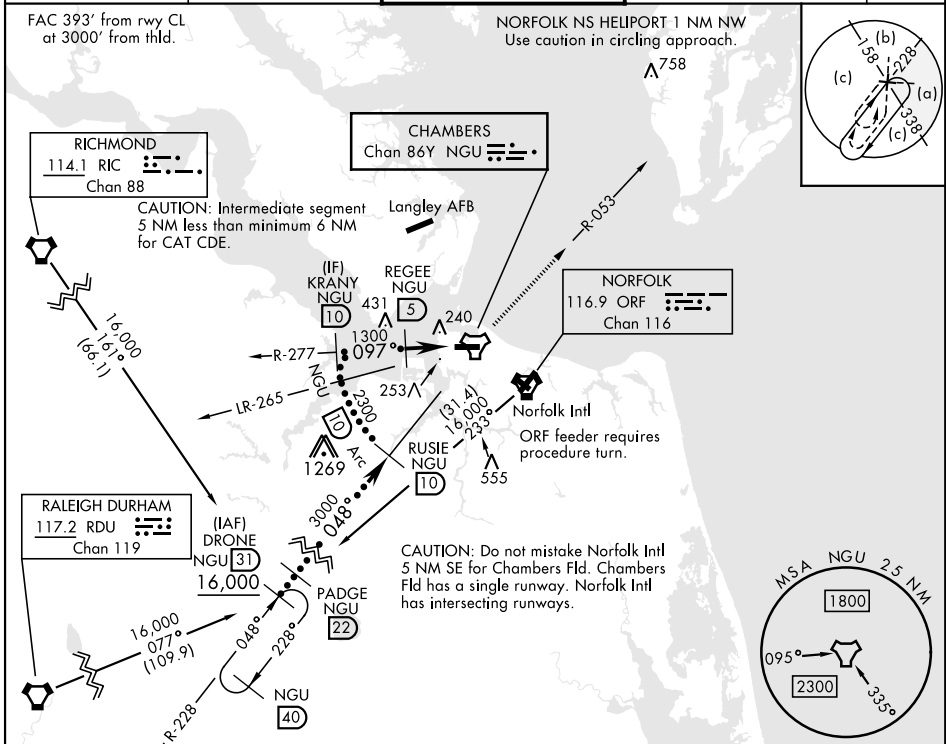
TACAN	NGU	APCH CRS	Rwy ldg
Chan	86Y	097°	8071
		TDZE	14
		Arpt Elev	15

[USN]

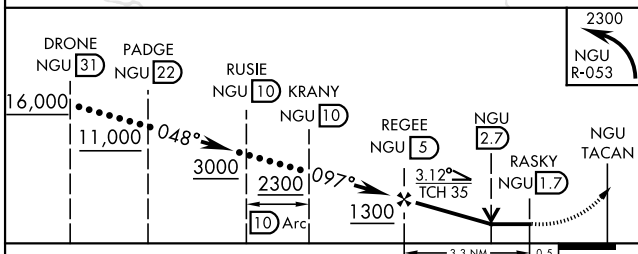
NORFOLK NS (CHAMBERS FLD) (KNGU)

RADAR required	ALSF-2	MISSED APPROACH: Climbing left turn to 2300 on NGU TACAN R-053 then as directed by ATC.
<p>* When ALS inop, increase CAT CDE vis to 1$\frac{1}{2}$ miles.</p> <p>** Circling not authorized S of Rwy 10-28.</p>		

ATIS 118.425 338.225	APP CON 118.9 273.475	CHAMBERS TOWER 124.3 379.15	GND CON 121.8 370.85	ASR/PAR
-------------------------	--------------------------	--------------------------------	-------------------------	---------



ELEV 15	TDZE 14
Rwy 10 ldg 8071' Rwy 28 ldg 7375'	



CATEGORY	C	D	E
S-10*	520-1	506	(600-1)
CIRCLING**	540-1 $\frac{1}{2}$ 525 (600-1 $\frac{1}{2}$)	580-2	565 (600-2)

