

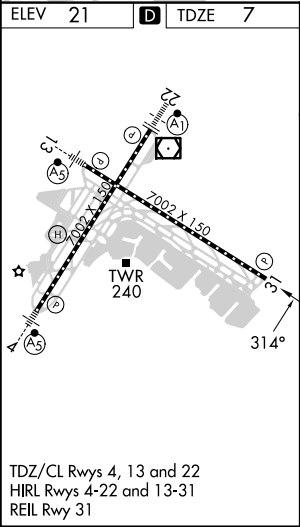
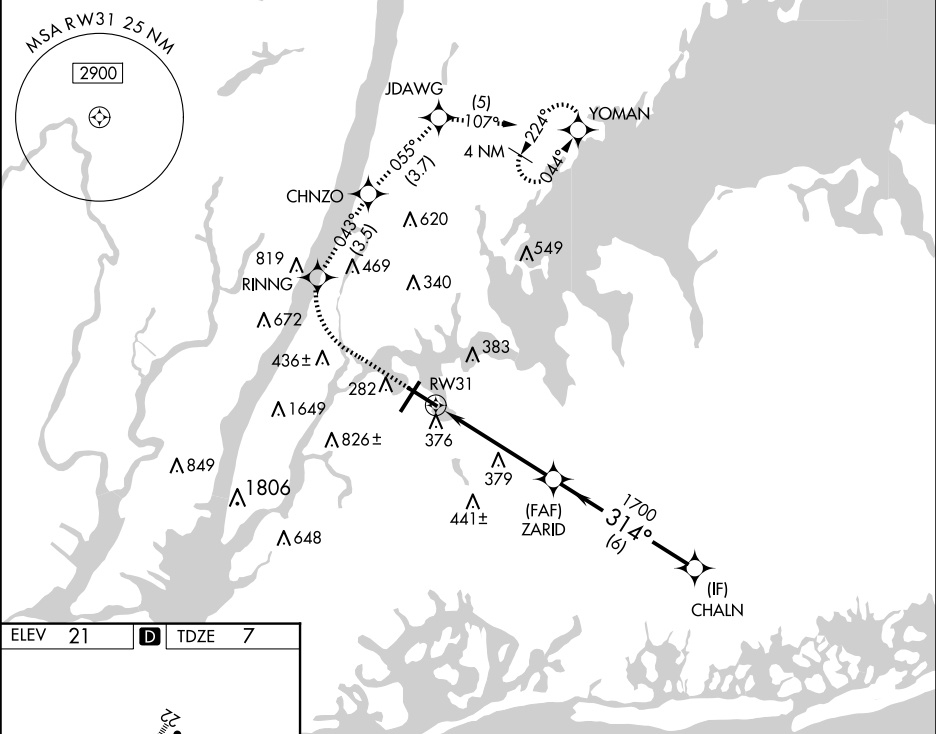
WAAS CH <b>48928</b> <b>W31A</b>	APP CRS <b>314°</b>	Rwy Idg <b>7002</b> TDZE <b>7</b> Apt Elev <b>21</b>
--	------------------------	--

RNAV (GPS) Z RWY 31

LAGUARDIA (LGA)

RNP APCH - GPS.	MISSED APPROACH: (Do not exceed 210K until YOMAN) Climb to 620 then climbing right turn to 3000 direct RINNG and on track 043° to CHNZO and on track 055° to JDAWG and on track 107° to YOMAN and hold, continue climb-in-hold to 3000.
▼ Rwy 31 helicopter visibility reduction below RVR 5000 NA. ▲ For uncompensated Baro-VNAV systems, LNAV/VNAV NA below -11°C or above 54°C. Circling NA northwest of Rwy 4 and southwest of Rwy 13.	

D-ATIS ARR <b>125.95</b>	NEW YORK APP CON <b>120.8 263.0</b>	LAGUARDIA TOWER <b>118.7 263.0</b>	GND CON <b>121.7 263.0</b>	CLNC DEL <b>135.2</b>	CPDLC
D-ATIS DEP <b>127.05</b>					



620	3000	RINNG	tr 043°	CHNZO	tr 055°	JDAWG	tr 107°	YOMAN	CHALN
VGSI and RNAV glidepath not coincident (VGSI Angle 3.00/ TCH 71).									
RW31									
ZARID 1700									
314°									
2000									
GP 3.10° TCH 50									
5 NM 6 NM									
CATEGORY	A		B		C		D		
LPV DA	330/50 323 (400-1)								
LNAV/ VNAV DA	618-1¼ 611 (600-1¼)								
LNAV MDA	640/55		633 (700-1)		640-1¼ 633 (700-1¼)				
CIRCLING	680-1		659 (700-1)		700-2 679 (700-2)		760-2¼ 739 (800-2¼)		