

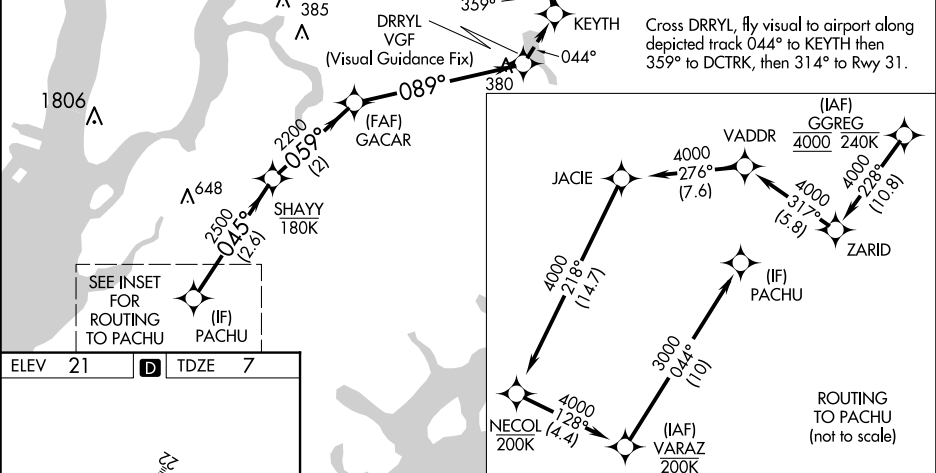
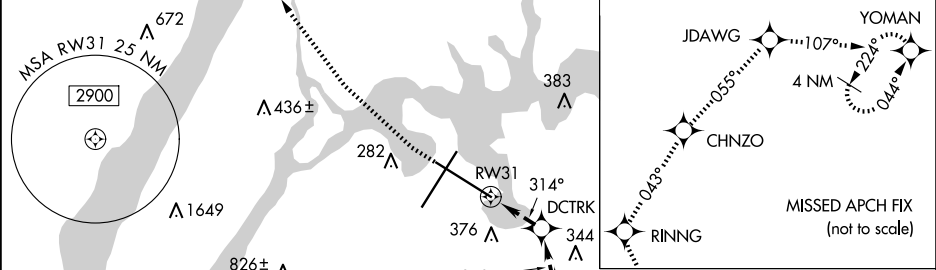
APP CRS	Rwy Idg	7002
314°	TDZE	7
	Apt Elev	21

RNAV (GPS) X RWY 31

LAGUARDIA (LGA)

RNP APCH - GPS.	MISSED APPROACH: (Do not exceed 165K until Rwy 31 and do not exceed 210K until YOMAN) Climbing right turn to 3000 direct RINNG and on track 043° to CHNZO and on track 055° to JDAWG and on track 107° to YOMAN and hold.
RADAR required.	
▼ ▲ Rwy 31 helicopter visibility reduction below ¾ SM NA.	

D-ATIS ARR	125.95	NEW YORK APP CON	120.8 263.0	LAGUARDIA TOWER	118.7 263.0	GND CON	121.7 263.0	CLNC DEL	135.2	CPDLC	
D-ATIS DEP	127.05										



	3000	RINNG	tr 043°	CHNZO	tr 055°	JDAWG	tr 107°	YOMAN	* Check ALT.
	VGSI and descent angles not coincident (VGSI Angle 3.00/TCH 71).								
	Turns required in the visual segment.								
	TDZ/CL Rwy 4, 13 and 22 HIRL Rwy 4-22 and 13-31 REIL Rwy 31								
CATEGORY	A		B		C		D		
LNAV MDA			1160-4		1153 (1200-4)				