



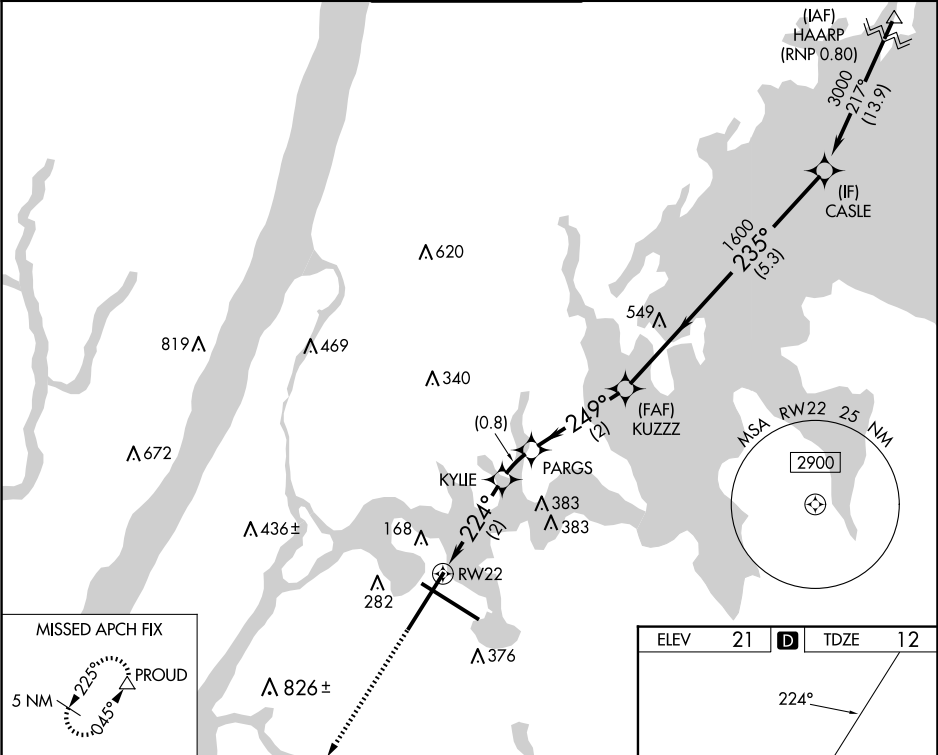
APP CRS	Rwy Idg	7002
224°	TDZE	12
	Apt Elev	21



RNAV (RNP) Z RWY 22

LAGUARDIA (LGA)

RNP AR APCH - GPS. RF required.		ALSIF-1 	MISSED APPROACH: Climb to 3000 direct PROUD and hold, continue climb-in-hold to 3000. *Missed approach requires minimum climb of 397 feet per NM to 560.
 NA	For uncompensated Baro-VNAV systems, procedure NA below -11°C or above 54°C. For inop ALS, increase RNP 0.30 DA* visibility to RVR 5500.		

D-ATIS ARR	125.95	NEW YORK APP CON		LAGUARDIA TOWER		GND CON		CLNC DEL		CPDLC
D-ATIS DEP	127.05	120.8 263.0		118.7 263.0		121.7 263.0		135.2		



3000 PROUD 		VGSI and RNAV glidepath not coincident (VGSI Angle 3.00/TCH 67).			
		KYLIE	PARGS	CASLE	
		704	947	1600	3000
		224°	249°	235°	
		2 NM	0.8 NM	2 NM	5.3 NM
CATEGORY	A	B	C	D	
RNP 0.30 DA*	384/35		372 (400-¾)		
RNP 0.30 DA	445/40		433 (500-¾)		

