



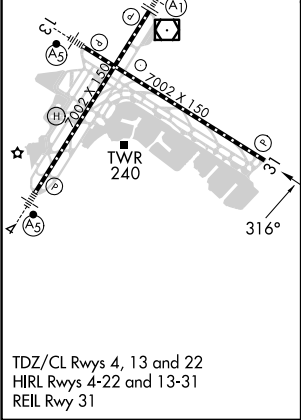
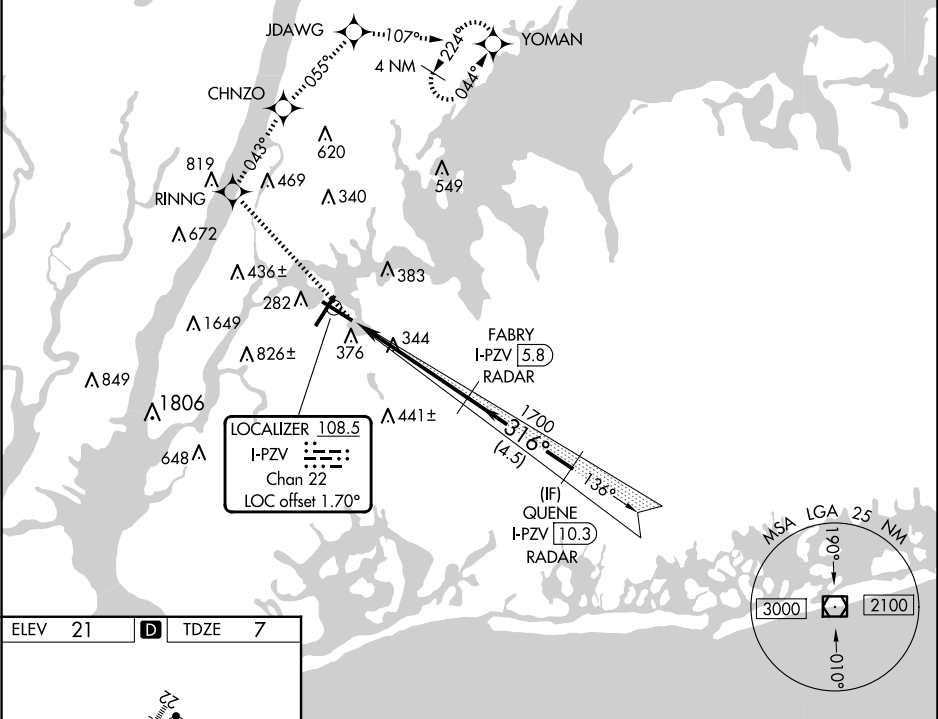
LOC/DME I-PZV	APP CRS	Rwy Ldg	7002
108.5	316°	TDZE	7
Chan 22		Apt Elev	21

LOC RWY 31

LAGUARDIA (LGA)

RNP APCH - GPS.		MISSED APPROACH: (Do not exceed 210K until YOMAN) Climb to 3000 direct RINNG and on track 043° to CHNZO and on track 055° to JDAWG and on track 107° to YOMAN and hold.
RADAR required for procedure entry. DME required.		
	Rwy 31 helicopter visibility reduction below RVR 4000 NA.	
	Circling NA northwest of Rwy 4 and southwest of Rwy 13.	

D-ATIS ARR 125.95	NEW YORK APP CON	LAGUARDIA TOWER	GND CON	CLNC DEL	CPDLC
D-ATIS DEP 127.05	120.8 263.0	118.7 263.0	121.7 263.0	135.2	



3000	RINNG	CHNZO	JDAWG	YOMAN
↑	tr 043°	tr 055°	tr 107°	
VGSI and descent angles not coincident (VGSI Angle 3.00/TCH 71).				
I-PZV 0.8	I-PZV 2.4	FABRY I-PZV 5.8 RADAR	QUENE I-PZV 10.3 RADAR	
1.6	3.4 NM	4.5 NM		
CATEGORY	A	B	C	D
S-31	600/55	593 (600-1)	600-1¾	593 (600-1¾)
CIRCLING	680-1	659 (700-1)	700-2 679 (700-2)	760-2¼ 739 (800-2¼)