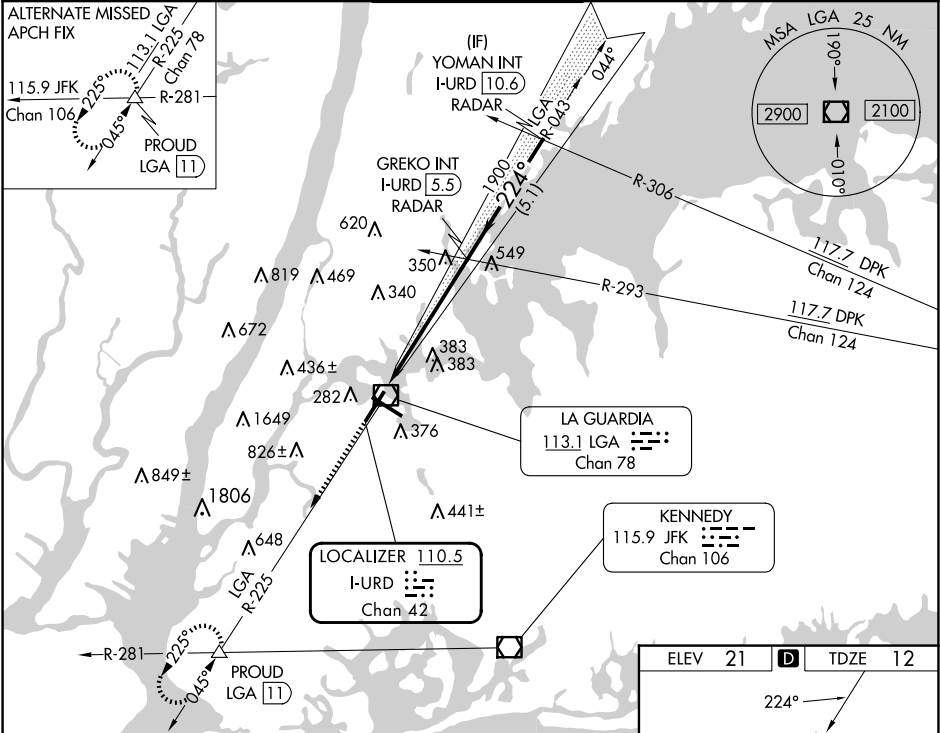


LOC/DME I-URD	APP CRS	Rwy Idg	7002
110.5	224°	TDZE	12
Chan 42		Apt Elev	21

ILS or LOC RWY 22
LAGUARDIA (LGA)

RADAR required for procedure entry. RADAR or DME required for LOC only.				ALSIF-1	MISSED APPROACH: Climb to 3000 on LGA VOR/DME R-225 to PROUD INT/LGA 11 DME and hold, continue climb-in-hold to 3000.			
Circling NA northwest of Rwy 4 and southwest of Rwy 13.								
D-ATIS ARR	125.95	NEW YORK APP CON		LAGUARDIA TOWER		GND CON	CLNC DEL	
D-ATIS DEP	127.05	120.8 263.0		118.7 263.0		121.7 263.0	135.2	CPDLC



3000	PROUD	VGSi and ILS glidepath not coincident (VGSi Angle 3.00/TCH 67).		YOMAN INT I-URD 10.6 RADAR
LGA R-225				
I-URD DME ANTENNA	I-URD 0.2	I-URD 1.5	1900	3000
	1.6 NM	4.1 NM	5.1 NM	GS 3.00° TCH 52
CATEGORY	A	B	C	D
S-ILS 22		212/18	200 (200-1/2)	
S-LOC 22	600/24	588 (600-1/2)	600-1 1/4	588 (600-1 1/4)
CIRCLING	700-1	679 (700-1)	1080-3	1260-3
			1059 (1100-3)	1239 (1300-3)

