

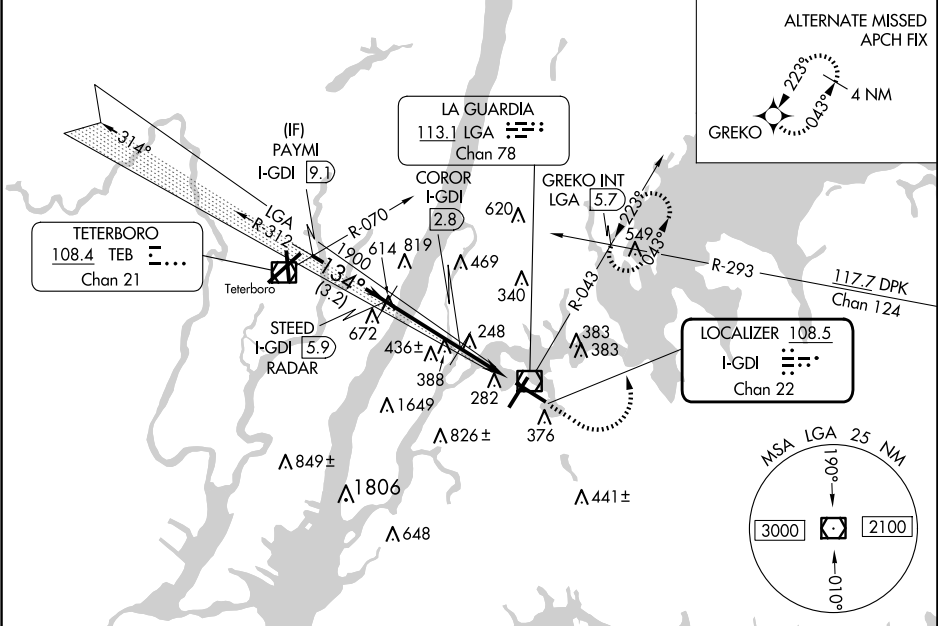
LOC/DME I-GDI	APP CRS	Rwy Idg	7002
108.5	134°	TDZE	12
Chan 22		Apt Elev	21

ILS or LOC RWY 13

LAGUARDIA (LGA)

Radar required for procedure entry. DME or RADAR required for LOC only.		MALSR	MISSED APPROACH: Climb to 800 then climbing left turn to 2000 on LGA VOR/DME R-043 to GREKO INT/LGA 5.7 DME and hold, continue climb-in-hold to 2000.
For inop ALS, increase S-LOC 13 Cats C/D visibility to 2½ SM. Circling NA northwest of Rwy 4 and southwest of Rwy 13.			

D-ATIS ARR 125.95 D-ATIS DEP 127.05	NEW YORK APP CON 120.8 263.0	LAGUARDIA TOWER 118.7 263.0	GND CON 121.7 263.0	CLNC DEL 135.2	CPDLC
--	---------------------------------	--------------------------------	------------------------	-------------------	-------



VGSI and ILS glidepath not coincident (VGSI Angle 3.10/TCH 55).				800	2000	GREKO INT
PAYMI I-GDI 9.1				*1900 when assigned by ATC		
STEED I-GDI 5.9 RADAR				LGA R-043		
COROR I-GDI 2.8				I-GDI 1.7		
GS 3.10° TCH 49°				3.2 NM		
3.1 NM				1.1 NM		
1.3 NM						
CATEGORY	A		B	C		D
S-ILS 13	212/18			200 (200-½)		
S-LOC 13	800/24 788 (800-½)	800/40 788 (800-¾)	800-1¾	788 (800-1¾)		
CIRCLING	800-1 779 (800-1)	800-1¼ 779 (800-1¼)	1080-3 1059 (1100-3)	1260-3 1239 (1300-3)		
COROR FIX MINIMUMS						
S-LOC 13	500/24	488 (500-½)	500/50	488 (500-1)		
CIRCLING	700-1	679 (700-1)	1080-3 1059 (1100-3)	1260-3 1239 (1300-3)		

ELEV 21 D TDZE 12

134°

7002 X 150

TWR 240

TDZ/CL Rws 4, 13 and 22  
HIRL Rws 4-22 and 13-31  
REIL Rwy 31

FAF to MAP 5.5 NM

Knots	60	90	120	150	180
Min:Sec	5:30	3:40	2:45	2:12	1:50