

LOC/DME I-URD	APP CRS	Rwy Idg	7002
110.5	224°	TDZE	12
Chan 42		Apt Elev	21

ILS RWY 22 (SA CAT I & II)
LAGUARDIA (LGA)

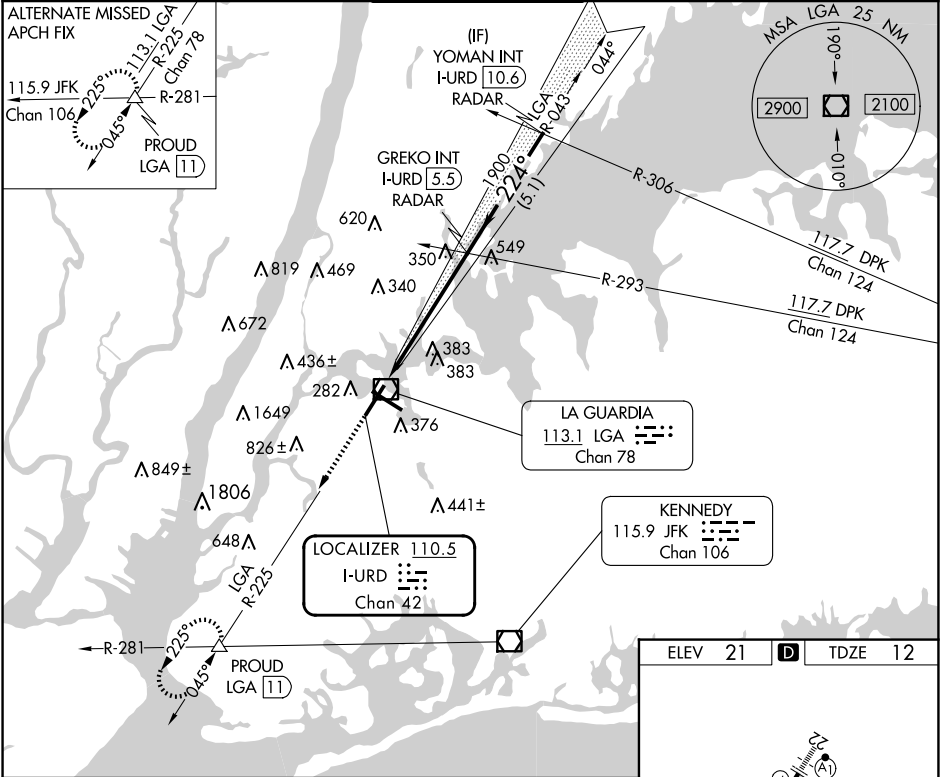
RADAR required for procedure entry.

SA CAT I: Requires specific OPSPEC, MSPEC or LOA approval and use of HUD to DH. SA CAT II: Reduced lighting: Requires specific OPSPEC, MSPEC, or LOA approval and use of autoland or HUD to touchdown.

ALSF-1

MISSED APPROACH: Climb to 3000 on LGA VOR/DME R-225 to PROUD INT/LGA11 DME and hold, continue climb-in-hold to 3000.

D-ATIS ARR	125.95	NEW YORK APP CON	120.8 263.0	LAGUARDIA TOWER	118.7 263.0	GND CON	121.7 263.0	CLNC DEL	135.2	CPDLC
D-ATIS DEP	127.05									



3000

PROUD

VGSI and ILS glidepath not coincident (VGSI Angle 3.00/TCH 67).

GREKO INT I-URD 5.5

YOMAN INT I-URD 10.6

1900

224°

3000

GS 3.00° TCH 52

1017	5.7 NM	5.1 NM		
CATEGORY	A	B	C	D
S-ILS 22	SA CAT I	RA 162/14	150	DA 162
S-ILS 22	SA CAT II	RA 112/12	100	DA 112

SA CATEGORY I & II ILS - SPECIAL AIRCREW & AIRCRAFT CERTIFICATION REQUIRED

ELEV 21

TDZE 12

TDZ/CL Rwy 4, 13 and 22

HIRL Rwy 4-22 and 13-31

REIL Rwy 31

NE-2, 10 JUL 2025 to 07 AUG 2025

NE-2, 10 JUL 2025 to 07 AUG 2025