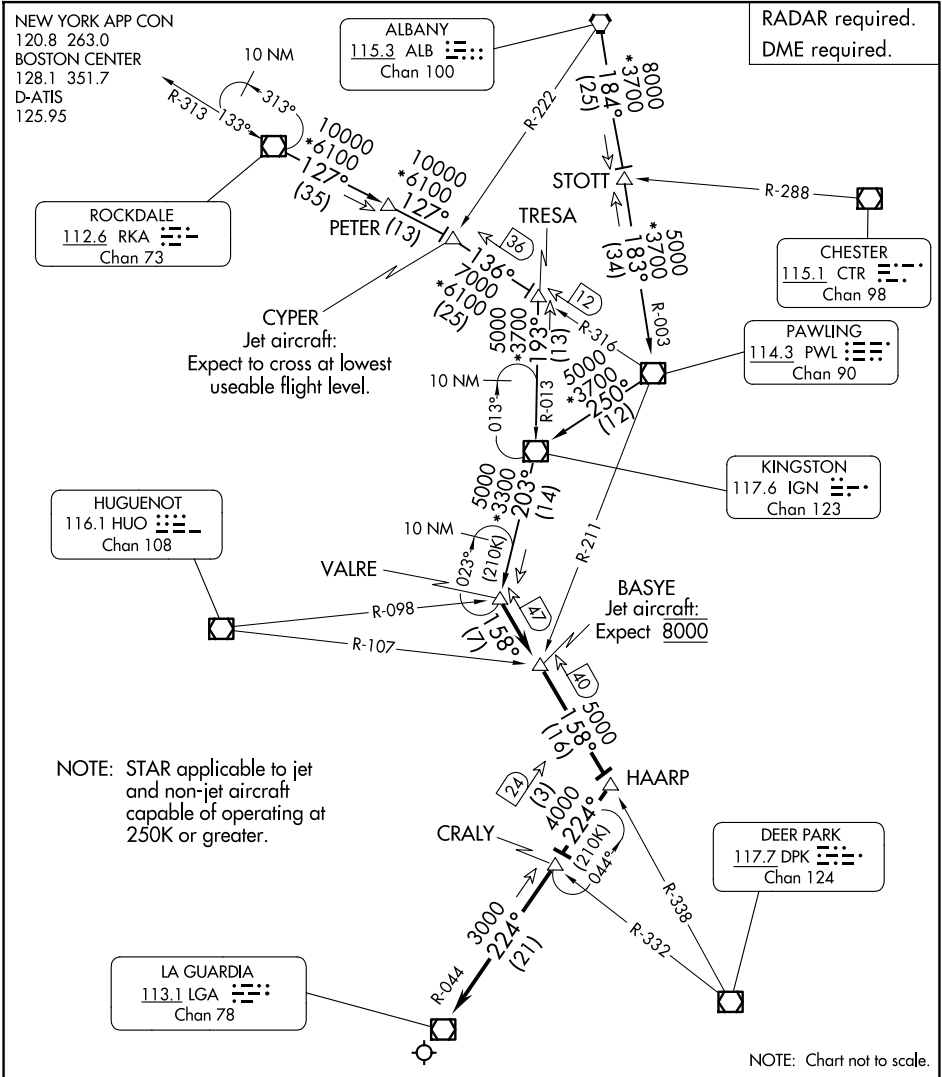


HAARP FOUR ARRIVAL



ALBANY TRANSITION (ALB.HAARP4): From over ALB VORTAC on ALB R-184 to STOTT, then on PWL R-003 to PWL VOR/DME, then on PWL R-250 and IGN R-070 to IGN VOR/DME, then on IGN R-203 to VALRE, thence....

ROCKDALE TRANSITION (RKA.HAARP4): From over RKA VOR/DME on RKA R-127 to CYPER, then on PWL R-316 to TRESA, then on IGN R-013 to IGN VOR/DME, then on IGN R-203 to VALRE, thence....

....From over VALRE on DPK R-338 to BASYE, then to HAARP, then on LGA R-044 to CRALY, then to LGA VOR/DME. Expect radar vectors to final approach course.