

NE-2, 10 JUL 2025 to 07 AUG 2025

NEW YORK, NEW YORK

AL-289 (FAA)

24361

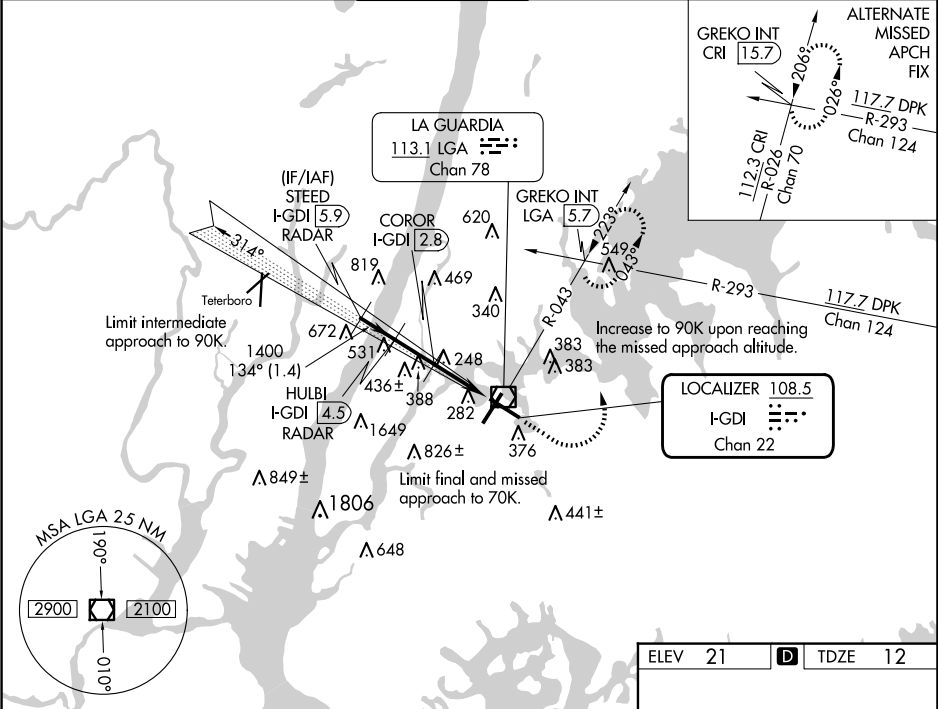
LOC/DME I-GDI	APP CRS	Rwy Idg	7002
108.5	134°	TDZE	12
Chan 22		Apt Elev	21

# COPTER ILS or LOC RWY 13

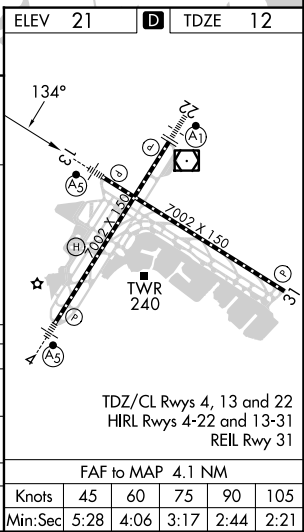
LAGUARDIA (LGA)

RADAR required for procedure entry. DME or RADAR required.	MALSR	MISSED APPROACH: Climb to 800 then climbing left turn to 2000 on LGA VOR/DME R-043 to GREKO INT/LGA 5.7 DME and hold, continue climb-in-hold to 2000.

D-ATIS ARR 125.95 D-ATIS DEP 127.05	NEW YORK APP CON 120.8 263.0	LAGUARDIA TOWER 118.7 263.0	GND CON 121.7 263.0	CLNC DEL 135.2 121.875 (COPTER)	CPDLC
--	------------------------------	-----------------------------	---------------------	------------------------------------	-------



VGSI and ILS glidepath not coincident (VGSI Angle 3.10/TCH 55).		800	2000	GREKO INT
STEED I-GDI 5.9 RADAR	HULBI I-GDI 4.5 RADAR	↑	↶	LGA R-043
2500	1400	1400	700	*LOC only.
GS 3.10°	HCH 49	1.4 NM	1.7 NM	1.1 NM
Intermediate descent gradient is 765 feet/NM.				
COROR FIX MINIMUMS				
H-ILS 13	212/12	200	(200-¼)	
H-LOC 13	700/12	688	(700-¼)	
H-LOC 13	500/12	488	(500-¼)	



NEW YORK, NEW YORK  
Amdt 1 17JUN21

40°47'N-73°52'W

# LAGUARDIA (LGA)

## COPTER ILS or LOC RWY 13

NE-2, 10 JUL 2025 to 07 AUG 2025