

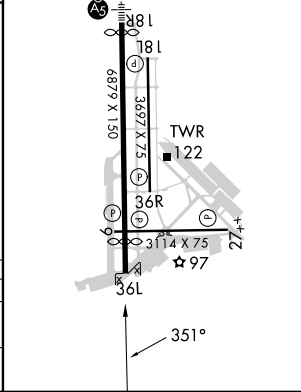
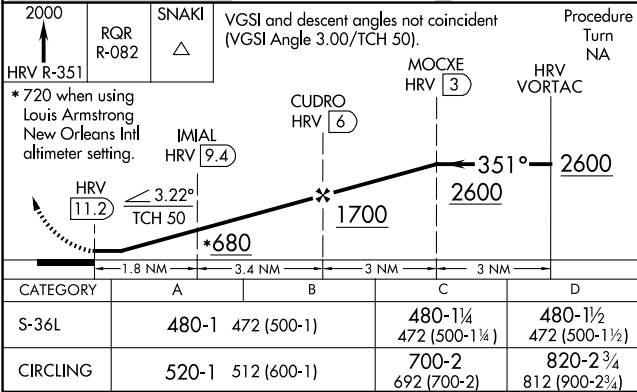
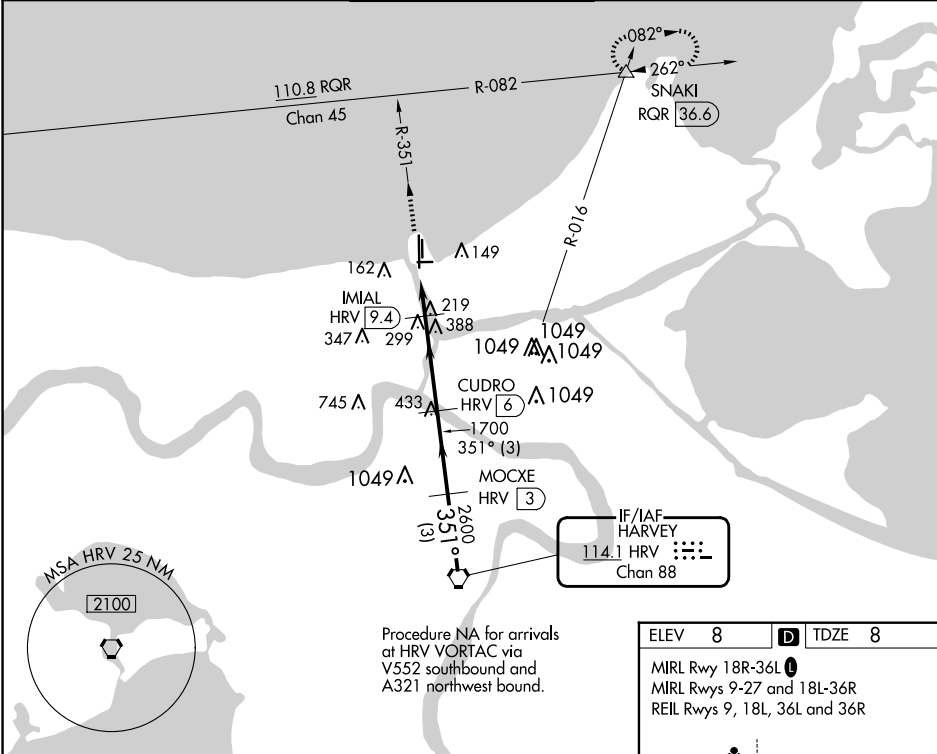
|         |         |          |      |
|---------|---------|----------|------|
| VORTAC  | HRV     | Rwy Idg  | 5135 |
| 114.1   | APP CRS | TDZE     | 8    |
| Chan 88 | 351°    | Apt Elev | 8    |

VOR/DME RWY 36L  
LAKEFRONT (NEW)

Visibility reduction by helicopters NA.  
When local altimeter setting not received, use Louis Armstrong New Orleans Intl altimeter setting and increase all MDA 40 feet and increase S-36L Cat C/D and Circling Cat D visibilities ¼ mile.

MISSED APPROACH: Climb to 2000 via HRV R-351 and RQR R-082 to SNAKI INT/RQR 36.6 DME and hold.

|               |   |                                     |                          |                   |
|---------------|---|-------------------------------------|--------------------------|-------------------|
| ATIS<br>124.9 | NEW ORLEANS APP CON<br>NORTH 133.15 290.3<br>SOUTH 123.85 256.9 | LAKEFRONT TOWER ★<br>118.95(CTAF) 0 | GND CON<br>121.7 335.575 | CLNC DEL<br>127.4 |
|---------------|---|-------------------------------------|--------------------------|-------------------|



SC-4, 10 JUL 2025 to 07 AUG 2025

SC-4, 10 JUL 2025 to 07 AUG 2025