

WAAS CH <b>42910</b> <b>W06A</b>	APP CRS <b>063°</b>	Rwy Idg <b>5001</b> TDZE <b>156</b> Apt Elev <b>164</b>
--	------------------------	---

# RNAV (GPS) RWY 6

## HUDSON VALLEY RGNL (POU)

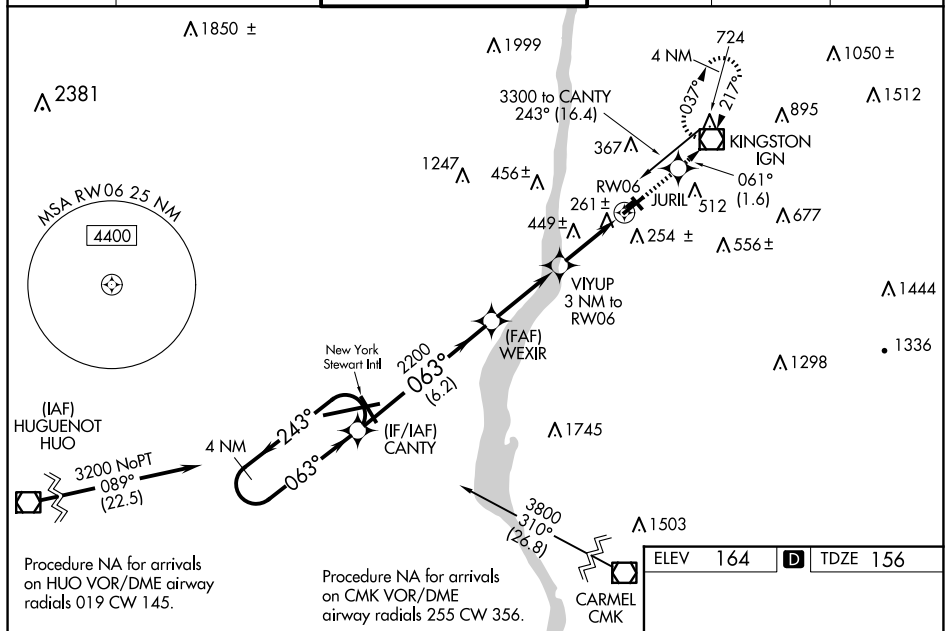
**⚠** Circling NA to Rwy's 7 and 25. Baro-VNAV NA when using Montgomery altimeter setting. For uncompensated Baro-VNAV systems, LNAV/VNAV NA below -15°C (5°F) or above 49°C (120°F). Circling Rwy 15, 33 NA at night. Rwy 6 helicopter visibility reduction below ¾ SM NA. Rwy 15, 33 helicopter visibility reduction below 1 SM NA. DME/DME RNP-0.3 NA. When local altimeter setting not received, use Montgomery altimeter setting; increase LPV DA to 574; increase LNAV/VNAV DA to 809 and all Cats visibility ¼ SM; increase all MDA 80 feet and LNAV Cats C/D and Circling Cats C/D visibility ¼ SM; inop table does not apply to LNAV Cats A/B; for inop ALS, increase LPV all Cats visibility to 1½ SM. For inop ALS when using Montgomery altimeter setting, increase LPV all Cats visibility to 1½ SM, LNAV/VNAV all Cats visibility to 2 SM and LNAV Cats C/D to 1½ SM.

MALSR

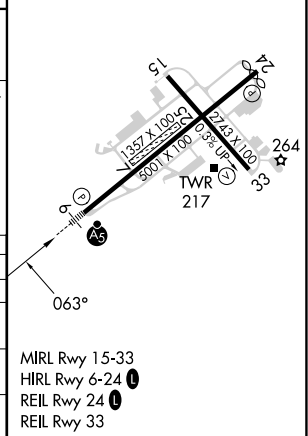


**MISSED APPROACH:**  
Climb to 3000 direct  
JURIL and on track  
061° to IGN  
VOR/DME and hold,  
continue  
climb-in-hold  
to 3000.

ATIS 126.75	NEW YORK APP CON 132.75 363.1	DUTCHESS COUNTY TOWER ★ 124.0 (CTAF) 0 269.15	GND CON 121.8	CLNC DEL 121.8	UNICOM 122.95
----------------	----------------------------------	--	------------------	-------------------	------------------



CATEGORY	A	B	C	D
LPV DA		503-1	347 (400-1)	
LNAV/VNAV		738-1½	582 (600-1½)	
LNAV MDA	740-1	584 (600-1)	740-1¼	584 (600-1¼)
CIRCLING	760-1 596 (600-1)	840-1 676 (700-1)	940-2¼ 776 (800-2¼)	1080-3 916 (1000-3)



NE-2, 10 JUL 2025 to 07 AUG 2025