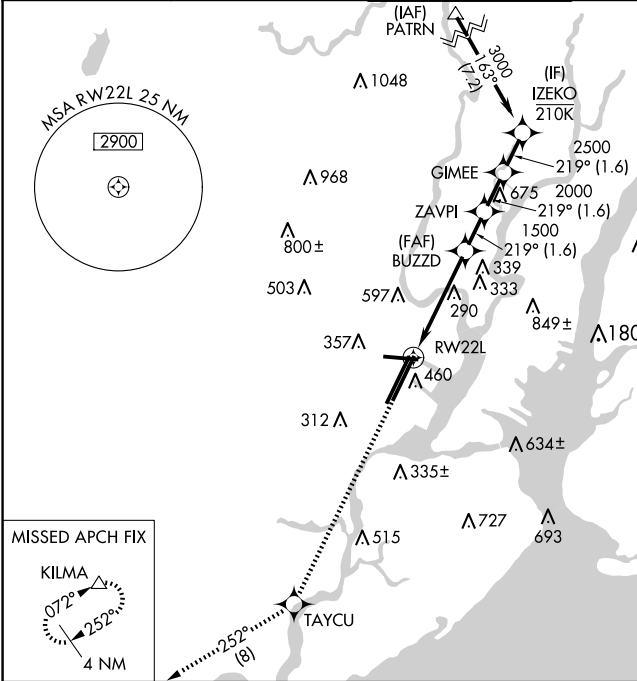


WAAS CH 70324 W22A	APP CRS 219°	Rwy Idg 8205 TDZE 11 Apt Elev 17
--	------------------------	---

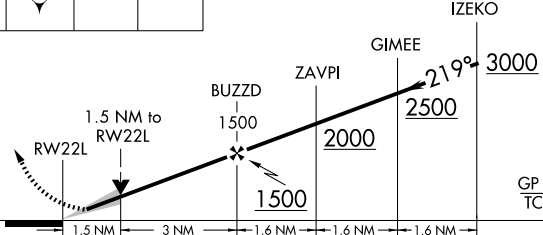
RNAV (GPS) Z RWY 22L

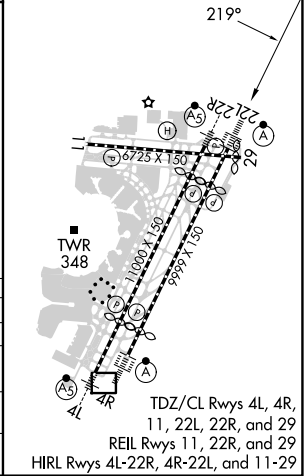
NEWARK LIBERTY INTL (EWR)

RNP APCH - GPS.		ALSIF-2	MISSED APPROACH: Climb to 3000 direct TAYCU and on track 252° to KILMA and hold.		
D-ATIS 115.7 134.825		NEWARK APP CON 128.55 379.9	NEWARK TOWER 118.3 257.6	GND CON 121.8	CLNC DEL 118.85
				CPDLC	



ELEV 17	TDZE 11
---------	---------

3000	TAYCU	tr 252°	KILMA	VGSI and RNAV glidepath not coincident (VGSI Angle 3.00°/TCH 60°).				
↑	✱		△					
								
GP 3.00° TCH 43								
CATEGORY		A		B		C		D
LPV DA				211/18		200 (200-½)		
LNAV/VNAV DA				462/45		451 (500-¾)		
LNAV MDA		560/24	549 (600-½)	560/60		549 (600-1¼)		
CIRCLING		660-1	643 (700-1)	900-2¾ 883 (900-2¾)		900-3 883 (900-3)		



NE-2, 10 JUL 2025 to 07 AUG 2025

NE-2, 10 JUL 2025 to 07 AUG 2025