

APP CRS	Rwy Idg	8809
039°	TDZE	11
	Apt Elev	17

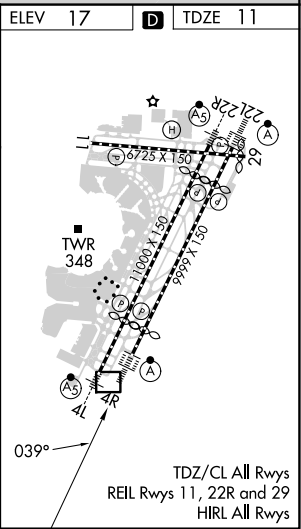
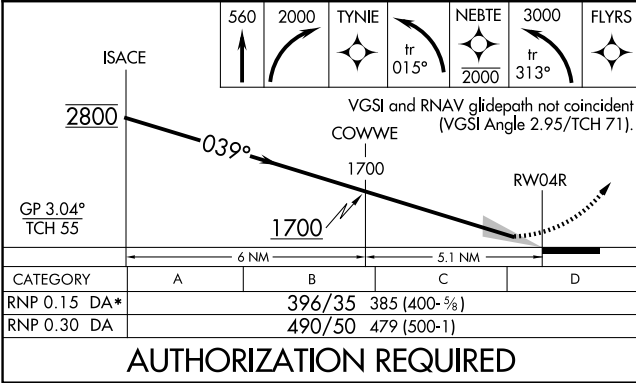
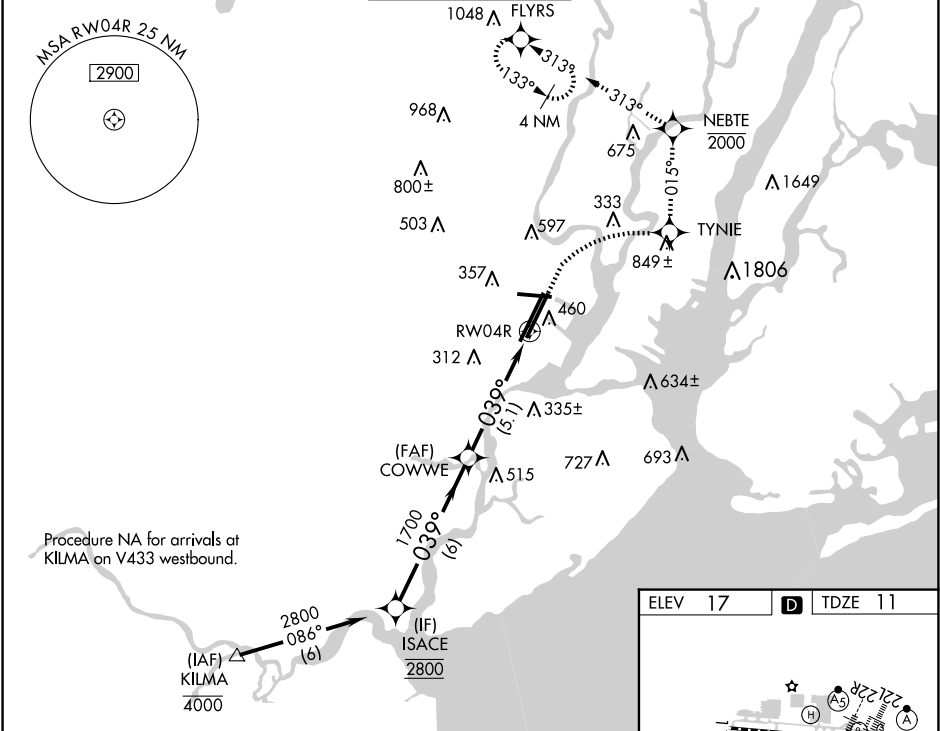
RNAV (RNP) Z RWY 4R

NEWARK LIBERTY INTL (EWR)

RNP AR APCH.
RADAR required.
▼ For uncompensated Baro-VNAV systems, procedure
▲ NA below -12°C or above 54°C. For inop ALS,
increase RNP 0.30 all Cats visibility to 1½ SM.

ALSF-2
MISSED APPROACH: (Do not exceed 210K until NEBTE) Climb to 560 then climbing right turn to 2000 direct TYNIE and left turn on track 015° to NEBTE, cross NEBTE at or below 2000 then climbing left turn to 3000 on track 313° to FLYRS and hold, continue climb-in-hold to 3000.
* Missed approach requires minimum climb of 351 feet per NM to 660.

D-ATIS	NEWARK APP CON	NEWARK TOWER	GND CON	CLNC DEL	CPDLC
115.7 134.825	128.55 379.9	118.3 257.6	121.8	118.85	



NE-2, 10 JUL 2025 to 07 AUG 2025

NE-2, 10 JUL 2025 to 07 AUG 2025

RNAV (RNP) Z RWY 4R